

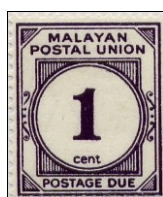
CHAPTER TWELVE

MALAYAN POSTAL UNION POSTAGE DUES LABELS.

The Malayan Postal Union postage due labels were introduced in June 1936 to provide a common label for use in the Federated Malay States and Straits Settlements. After the Second World War, the use of these labels was extended in 1945 to include Johore, Kedah, Kelantan and Trengganu. There is no evidence that these labels were ever used in North Borneo and Sarawak.

Crown Agents issued, under G/Straits 2516, invitations to tender on 12 September 1935 for six values of postage due labels (1c. purple, 4c. green, 8c. red, 10c. orange, 12c. blue and 50c. black), based on the Federated Malay States design but inscribed "Malayan Postal Union". They were to be "surface printed" (i.e. letterpress) in sheets of 100 on watermarked paper supplied by Crown Agents at £1.4.3 per ream of 500 sheets. Although urgent, payment would need to be after 1 January 1936 (i.e. in the next financial year). De La Rue submitted a quotation on 21 September, promising delivery in seven weeks from placement of the order, but this was rejected by the Crown Agents on 27 September.

For most of the life of this issue, the labels were, instead, printed by Waterlow by letterpress on paper with Multiple Script CA upright watermark. Their 21mm x 24mm design was, as requested, based on that previously used for the Federated Malay States and shows the numeral of the value in a circle in a square in an octagon in a square.



Throughout the use of these labels, no change was made to the printed design, and, indeed, the same 100-set single-pane plates (without plate numbers) were used throughout the life of the issue despite a change of printer, but there were detailed differences between printings, as explained below. Although this book is generally only concerned with post-1948 issues, the story of this labels is so interwoven that it is essential to cover the whole period of this issue as a single story.

The early period of this issue was complicated by the independent ordering of the issue by participating states before 1945. Each of the FMS states ordered separately, but the Straits Settlements placed a single order. However, even this is not straightforward. Singapore was the main distribution point for labels, but the ship called at Penang en-route. To save shipping costs, Penang's share of the order was packed separately and dropped off at that port. The Requisition is therefore usually annotated to ensure that Penang received exact quantities and any variation was taken by Singapore. After 1945, only a single order was placed each time.

INDEX to Printing information

	See Item		See Item
Overprint	19.	Values	9c. 5.
Perforation	14.8 x 14.1		10c. 1-4.
	14.2		12c. 1-4, 12, 16, 18, 20-21.
	12.6		15c. 5.
	12.2		20c. 6-9, 11, 13-18, 20-21.
Values	1c.		50c. 1, 6, 22.
	2c.	Watermark	Multiple 1-17, 19.
	3c.		Script CA
	4c.		Multiple St. 18, 20-22.
	5c.		Edward's
	8c.		Crown CA

1. Reqn. G9/1314/1 (Negri Sembilan), G9/1369/1 (Pahang), G9/2516/2 (Straits Settlements), G9/3262/1 (Selangor) and G9/4571/1 (Perak) (1935). New Issue 1936-1938.

The order for the first batch of Malayan Postal Union postage due labels was placed in 1935, probably on or shortly after 27 September, in six values; 1c. slate purple, 4c. green, 8c. scarlet, 10c. yellow-orange, 12c. pale ultramarine, 50c. black. Quantities of sheets ordered were:

Value	State.	1c.	4c.	8c.	10c.	12c.	50c.
G9/1314/1	Negri Sembilan	450	450	600	800	380	30
G9/1369/1	Pahang	150	100	150	200	100	20
G9/2516/2	Straits	2500	2420	4260	4098	2186	270
	(Penang)	700	750	1100	1300	850	80
	(Singapore)	1600	1550	3100	2750	1300	170

Value	State. (GPO)	1c. 200	4c. 120	8c. 60	10c. 48	12c. 35	50c. 20
G9/3262/1	Selangor	1000	1150	1800	2350	1150	100
G9/4571/1	Perak	1100	1000	1250	1600	1220	100

Straits Settlements requested delivery by 1 January 1936, with payment not before that date. The "GPO" entry was provision for the quantity needed by GPO Singapore for specimens and for supply to dealers. All values exist perforated "SPECIMEN" in a straight line, diagonally from bottom left to top right, from this allocation. After World War Two, supply to dealers was taken over by the Crown Agents Stamp Bureau.

Original sketches for 2c. and 12c. values were prepared under Straits Settlements Reqn G/Straits 2516 of 1935 and papers slips made to apply the other values to these master drawings. The six designs were submitted to the Crown Agents Inspector of Stamps on 23 October 1935 and approved on 25 October. The plates were released by the Crown Agents Inspector of Stamps to the printer on 1 November (50c.), 4 November (4c., 8c.) and 5 November (1c., 10c., 12c.). Waterlow returned the plates on 6 November (50c.), 8 November (10c.), 13 November (1c.), 15 November (8c.), 19 November (12c.), 20 November (4c.). The labels were printed on smooth, ordinary paper and perforated line 14.8 x 14.1. The paper gives no significant ultra-violet reaction.¹

Shipping dates and quantities were as follows:

Reqn.	Shipped	1c.	4c.	8c.	10c.	12c.	50c.
G9/1314/1	16Dec1935	450	450	630	800	400	30
G9/1369/1	16Dec1935	150	100	157	200	105	20
G9/2516/2	20Dec1935	2500	2420	4470	4098	2293	270
G9/3262/1	24Dec1935	1000	1150	1890	2350	1207	100
G9/4571/1	24Dec1935	1100	1000	1312	1600	1280	100

Sheet markings:

The margins contained "Jubilee" lines which differed from value to value but were constant throughout the life of the issue. These original values had 3mm bars adjacent to each label with breaks between labels and no corner pieces. There were guide crosses above and below column 5, towards the right of the column, and to left and right of row 6, towards the top. Each cross was pierced through the centre to register the sheet for perforating. There is a vertical line in the right margin opposite row 3 with a few traces opposite rows 2 and 4.

Varieties:

The letterpress process and the low significance of postage due labels conspire to give many minor flaws, transitory or permanent. As the same plates were used throughout the life of each value of the issue, plate flaws inevitably occur over long periods, sometimes on all printings of a particular value. Varieties that are reported to be constant on this first series of values are as follows:²

No.	Value	Position	Variety
v1	4c.	R4/2	Flaw on top stroke of "G" touches "E" in "POSTAGE".
v2		R3/4	Closed "G" in "POSTAGE". (Also reported as R4/3)
v3		R4/1-4/10	Inner right frame broken opposite top S of bottom stoke ornament. (alongside the upper curl of the right hand ornament)
v1	8c.	R4/4	Corner inner frame line broken at top left (break adjacent to the bottom corner of the top left triangle). ³
v2		R8/1	Left leg of "A" in "POSTAGE" shorter.
v3		R10/4	A long tailed "t" in "cents".
v1	12c.	R6/10	Inner frame line broken at top left.
v2		R7/7	Minor dot above "P".
v3		R9/10	Minor dot above "M".
v4		R10/5	Minor dot at bottom right hand corner.

I.S.C. lists an 8c. in carmine as S3a. This may be a shade from a reprint.

Issue dates:

The new labels were only released when stocks of FMS or Straits Settlements labels (as appropriate) became exhausted, so some values were in store for considerable periods before release and some states would still be using old labels after other states had gone over to the new ones. The currently accepted dates of issue are June 1936 (8c., 10c.), September 1936 (4c., 12c.), January 1938 (50c.) and April 1938 (1c.). The delay to the 1c. can be explained by extensive remaining stocks of the Straits Settlements 1c. label, but there was no previous 50c. value. The postal purpose of this value has not been established.

After these dates, the Straits Settlements labels were still in use as follows: 1c. Singapore 25 December 1938; 4c. Singapore 29 July 1937, Penang 12 November 1937; 10c. Singapore 3 July 1936; 12c. Malacca 13 February 1937, Singapore 29 July 1937, Penang 12 November 1937. Later dates may exist.

No.	S.G.	I.S.C.		Mint	Used
36P.1.1	D1	D1	1c.	<input type="checkbox"/>	<input type="checkbox"/>
36P.1.1a	D1s	-	- Perforated Specimen.	<input type="checkbox"/>	-
36P.1.2	D2	D2	4c.	<input type="checkbox"/>	<input type="checkbox"/>
36P.1.2a	D2s	-	- Perforated Specimen.	<input type="checkbox"/>	-
36P.1.3	D3	D3	8c.	<input type="checkbox"/>	<input type="checkbox"/>
36P.1.3a	D3s	-	- Perforated Specimen.	<input type="checkbox"/>	-
36P.1.4	D4	D4	10c.	<input type="checkbox"/>	<input type="checkbox"/>
36P.1.4a	D4s	-	- Perforated Specimen.	<input type="checkbox"/>	-
36P.1.5	D5	D5	12c.	<input type="checkbox"/>	<input type="checkbox"/>
36P.1.5a	D5s	-	- Perforated Specimen.	<input type="checkbox"/>	-
36P.1.6	D6	D6	50c.	<input type="checkbox"/>	<input type="checkbox"/>
36P.1.6a	D6s	-	- Perforated Specimen.	<input type="checkbox"/>	-

2. Reqn. G9/1519/1 (Pahang), G9/3626/1 (Straits Settlements) and G9/5030/1 (Perak) (1937).

These required reprinting without change of the 4c., 8c., 10c. and 12c. It should be noted that Negri Sembilan and Selangor did not place orders at this time and not all values were ordered in each case. The plates were released on 24 May 1937 and returned the next day (8c.) or the day after (remainder). The labels were shipped on 1 June 1937.

Reqn.	State.	Ordered.				Supplied (parcelled in 150s).			
		4c.	8c.	10c.	12c.	4c.	8c.	10c.	12c.
G9/1519/1	Pahang	100	150	200	100	105	150	200	105
G9/3626/1	Perak	-	-	400	-	-	-	400	-
G9/5030/1	Straits	200	600	900	-	210	600	900	-

Issue date:

The first use is likely to have been towards the end of 1937, depending on the stock situation. The absence of a reprint of the 1c. and 50c. confirms the lack of any significant use of these values at this date.

3. Reqn. G9/1465/1 (Negri Sembilan), G9/3677/1 (Selangor), G9/4083/1 (Straits Settlements) and G9/5209/1 (Perak) (1938).

These required a second reprint without change of the same values as ordered in 1937 for delivery by 5 May 1938. The 1c. and 50c. would appear to remain little-used. The plates were released on 7 April 1938 and returned the same day. The labels were shipped on 11 and 12 May as shown in the table below.

Reqn.	State.	Ordered.				Supplied (parcelled in 100s).					
		4c.	8c.	10c.	12c.	Shipped		4c.	8c.	10c.	12c.
G9/1465/1	N.S.	150	300	500	200	11May1938	156	315	478	-	
						12May1938	-	-	-	205	
G9/3677/1	Selangor	300	750	750	750	12May1938	301	784	755	764	
G9/4083/1	Straits	-	800	1250	-	11May1938	-	800	1235	-	
G9/5209/1	Perak	200	1000	1000	400	12May1938	205	964	1030	420	

Issue date:

The first use is likely to have been towards the end of 1938, depending on the stock situation.

4. Reqn. G9/1531/1 (Negri Sembilan), G9/1650/1 (Pahang), G9/3807/1 (Selangor), G9/4725/1 (Straits Settlements), G9/5409/1 (Perak) (1938).

These required a third reprint without change of the same four values, plus the first reprint of the 1c., indicating that it was now in sufficient demand as to have cleared the surplus stock. Indeed, priority was to be given to the 1c., 4c. and 10c. values, the first two being required by the end of February 1939 and at least some 10c. (all the 10c. order in the case of Pahang) being needed by the end of May 1939. The plates were released on 28 December 1938 and returned on 17 January 1939 (1c., 10c.), 23 January 1939 (8c., 12c.), 3 February 1939 (4c.). The 4c. plates were shown in error under the Pahang entry in the Requisition Book as returned on 2 March 1939.

Reqn.	1c.	4c.	Ordered.			Shipped	Supplied (parcelled in 100s).				
			8c.	10c.	12c.		1c.	4c.	8c.	10c.	12c.
G9/1531/1	1200	300	160	300	80	19Jan1939	1200	-	-	300	-
						26Jan1939	-	300	168	-	84
G9/1450/1	450	220	80	270	-	19Jan1939	450	-	-	270	-
						26Jan1939	-	220	84	-	-
G9/5409/1	4300	1750	560	1400	170	20Jan1939	4300	-	-	1400	-
						26Jan1939	-	1750	588	-	178
G9/3807/1	4300	1500	200	1300	250	20Jan1939	4270	-	-	1300	-
						26Jan1939	-	1500	210	-	262

Reqn.	Ordered.					Shipped	Supplied (parcelled in 100s).				
	1c.	4c.	8c.	10c.	12c.		1c.	4c.	8c.	10c.	12c.
G9/4725/1	6500	3500	1000	3500	1000	19-20Jan1939	6195	-	-	3598	-
<i>Penang</i>	<i>1600</i>	<i>300</i>	-	<i>200</i>	-	26Jan1939	-	Part	-	-	-
<i>Singapore</i>	<i>4900</i>	<i>3200</i>	<i>1000</i>	<i>3300</i>	<i>1000</i>	27Jan1939	-	-	1050	-	1050
						10Feb1939	-	3675	-	-	-

Issue date:

The first use was probably by the summer of 1939, depending on the stock situation. The absence of a reprint of the 50c. indicates continuing low use of this value.

5. Reqn. G9/1671/1 (Negri Sembilan), G9/1784/1 (Pahang), G9/4069/1 (Selangor), G9/5766/1 (Perak) and G9/6087/1 (Straits Settlements) (1940). New colour and values.

Postal rate changes resulting from the outbreak of World War Two resulted in new patterns of deficiencies and was thus the imperative for the decision to introduce new values. The colour of the 1c. was (unintentionally?) brightened from slate-purple to purple. New values were 3c. green, 5c. scarlet, 9c. yellow-orange and 15c. pale ultramarine. These Requisitions were raised, requiring delivery as soon as possible and not later than 19 July 1940. The order originally specified the sheets to be parcelled in 100s, but this was struck through, presumably as a wartime economy. The existing plate of the 1c. was released to the printer on 30 May 1940. Paper slips with the new value numerals were prepared under Straits Settlements Requisition 6087 of 1940 and applied to the original 2c. and 12c. artwork. Proofs of the 3c., 5c., 9c., 15c. were approved by R. W. Cook, the Crown Agents Inspector of Stamps, on 15 June 1940. The new plates were released on 17 June (3c.), 22 June (9c.), 26 June (5c.), 1 July (15c.). The plates were returned on 21 June (1c., 3c.), 3 July (5c., 9c.), 4 July (15c.). The Negri Sembilan and Pahang orders were shipped on 12 July and the rest on 1 August. "Large White Thin (gummed)" paper was issued separately on 30 May 1940 against each Requisition, each mill sheet producing four printed sheets. Waterlow and Sons were issued with paper for Pahang (338 sheets under PR 106/40), Selangor (1855 sheets under PR 115/40), Negri Sembilan (765 sheets under PR 104/40), Straits (5223 sheets under PR 116/40, including 16 "For Colour Proofs"), Perak (1723 sheets under PR 114/40).

Reqn.	State.	Ordered.					Supplied.				
		1c.	3c.	5c.	9c.	15c.	1c.	3c.	5c.	9c.	15c.
G9/1671/1	N.S.	760	500	500	500	500	760	500	500	500	500
G9/1784/1	Pahang	340	200	200	200	200	340	200	200	200	200
G9/5766/1	Perak	1260	1500	1500	1000	1000	1323	1575	1575	1050	1050
G9/4069/1	Selangor	1740	1500	1500	1000	1000	1760	1575	1575	1029	1050
G9/6087/1	Straits	5500	5200	5150	2080	1060	5613	5297	5288	2080	1110
	<i>Penang</i>	<i>1000</i>	<i>2000</i>	<i>2000</i>	<i>1000</i>	<i>500</i>					
	<i>Singapore</i>	<i>4500</i>	<i>3000</i>	<i>3000</i>	<i>1000</i>	<i>500</i>					
	<i>GPO</i>	-	<i>200</i>	<i>150</i>	<i>80</i>	<i>60</i>					

Notes: Rougher ordinary paper was used, but with the same watermark and perforation as before. Perforated specimens were not recorded, but, with the exception of the 1c., it seems illogical that they should not have been produced and circulated to the UPU. Perhaps the war conditions (Switzerland was virtually surrounded by occupied territory) meant that UPU rules were disregarded to avoid unnecessary expenditure. It should be noted that the 1c. was not treated as a new issue for official purposes.

Sheet markings:

The margins contained "Jubilee" lines which differed from value to value but were constant throughout the life of the issue. The 3c. and 5c. had corner pieces linking the bars adjacent to the corner labels.

Varieties:

I.S.C. lists a 3c. yellow-green shade (D8a) and a 5c. pink (D9a), possibly from the 1948 reprint. The 5c. on thin paper is reported to come from the 1947 order (q.v.).

Issue date:

Despite the apparent urgency at the time of ordering, it appears that they were not put into use before capture and overprinting by invading Japanese forces in late 1941/early 1942, at least a year after delivery. A second copy of the proof presentation sheet exists in the British Library Philatelic Collection annotated "This copy would normally have gone to H.M. but the labels were never issued" and initialled by Marcus Faux⁴, the Chief Inspector at the Crown Agents on 8 September 1948. This was an incorrect statement, as surviving stocks of the labels will have come into use with the resumption of paid postal services by the British Military Administration at the end of the war on 19 October 1945. A set is known postmarked, probably by favour, at Singapore on 16 July 1945. Earliest genuine post-war use dates reported to the author were 3 December 1945 (3c.), 28 December 1945 (9c.), 13 March 1946 (5c., 15c.), 13 April 1946 (1c.). Earlier dates are likely to exist. The first post-war printings were not ordered until 1947 and not available for use until early 1948.

No.	S.G.	I.S.C.		Mint	Used
36P.2.1	D7	D7	1c.	<input type="checkbox"/>	<input type="checkbox"/>
36P.2.2	D8	D8	3c.	<input type="checkbox"/>	<input type="checkbox"/>
36P.2.3	D9	D9	5c. Thick paper.	<input type="checkbox"/>	<input type="checkbox"/>
36P.2.3a	-	-	- Thin paper.	<input type="checkbox"/>	<input type="checkbox"/>
36P.2.4	D11	D11	9c.	<input type="checkbox"/>	<input type="checkbox"/>
36P.2.5	D12	D12	15c.	<input type="checkbox"/>	<input type="checkbox"/>

December 1940.

Given the problems of shipping labels from Britain during war time, an alternative needed to be found. A meter mark machine was adapted with a die inscribed "POSTAGE DUE" in place of the meter number. Proof strikes are known dated 28 November 1940. The mark was applied in green, usually to the back of envelopes. The same or a similar die was also used circa 1950 during post-war shortages.

December 1941.

The Imperial Japanese Army invaded Malaya on 8 December 1941. Penang fell on 20 December 1941 and the IJA achieved total occupation by the fall of Singapore on 16 February 1942. During 1942 to 1945, the MPU postage due labels were used with a variety of handstamps and overprints. This period is a specialised study in itself and the present author does not feel qualified to describe these issues in detail. I will therefore resume the story with the return of peace. It should, perhaps be regarded as significant that early Japanese handstamps and overprints are found on all the pre-war vales AND on the 1940 3c., suggesting that it was already generally available in post offices. The other 1940 values only appear with the later single-line Kanji overprint, suggesting that these were still in the reserve store. No examples of the 3c. used before the invasion are known to the author, but, on the above basis, it is possible that one may exist.

1945.

The unoverprinted remainders of the 1940 printing (1c. Purple, 3c. Green, 5c. Scarlet, 9c. Yellow-orange, 15c. Pale ultramarine) were finally officially released in 1945 (see above).

6. Reqn. G9/1477/1 (1947).

Colour changed and new value.

After the war, single Requisitions for labels was placed by the central store on behalf of all participating states. The first post-war order was placed in 1947 for 3000 sheets each of 1c., 3c. 5c., 8c., 20c. and 50c. labels for shipment by 1 January 1948. The 8c. colour was changed from scarlet to yellow-orange and a new 20c. value in blue was introduced. The others were reprints of the 1940 issue. The plates were released to Waterlow on 12 November 1947 (20c.), 14 November (1c.), 18 November (3c.), 20 November (5c.), 24 November (50c.), 1 December (8c.). For the 8c. and 20c., perforated Specimens were produced for GPO use (383), CA (1), CI (1), CO (1), HM (4), W&S (7), BM (1). These were the last perforated specimens of this series to be produced. They were shipped as follows: 16 December 1947 (3029 1c., 3137 5c., 2878 20c.), 1 January 1948 (3138 3c., 3012 8c., 3023 50c.).

Sheet markings:

The margins contained "Jubilee" lines which differed from value to value but were constant throughout the life of the issue. The 20c. had 2mm lines continuous down and across the sheet but without corner pieces. Guide crosses appeared to the left and right of R6.

Varieties:

Smooth, thin paper was used for this printing. The 5c. in particular was said to be distinguishable from the pre-war printing.

The 20c. in a violet-blue shade was said to come from the 1950 printing below. Varieties that were reported to be constant on these new values are as follows:

No.	Value	Position	Variety
v1	20c.	R1/9-10/9	Dot on (small mark projecting upwards from) inner frame line above "AN" in "MALAYAN".
v2		R8/1	Second "A" in "MALAYAN" almost solid.

Issue date:

The catalogues recorded that the 20c. blue appeared in 1948 and the 8c. in 1949, but the latter seems surprisingly late. The earliest use dates reported to the author were September 1948 for the 20c. and 3 November 1949 for the 8c.

No.	S.G.	I.S.C.		Mint	Used
36P.3.1	D10	D10	8c.	<input type="checkbox"/>	<input type="checkbox"/>
36P.3.1a	D10s	-	- Perforated Specimen.	<input type="checkbox"/>	-
36P.3.2	D13	D13	20c.	<input type="checkbox"/>	<input type="checkbox"/>
36P.3.2a	D13s	-	- Perforated Specimen.	<input type="checkbox"/>	-

7. Reqn. G9/4921/1 (1950).

This was an order placed on 3 November 1950 for 1150 sheets each of 1c., 5c. and 20c. labels. Specimens were required for His Majesty (4) and Waterlow (6). The plates were released to Waterlow on 23 November 1950. They were shipped on 24 January 1951 (1134 sheets 1c., 1105 5c.) or 25 January 1951 (957 20c.). For the first time, the Crown Agents Stamp Bureau received a further 150 sheets of each value.

Varieties:

The 20c. was reported to be in a new shade of violet-blue.⁵ The others were unchanged reprints of previous issues. The substitute crown watermark variety (see Chapter 3) is likely to occur on this printing, but has not been reported.

Issue date:

Release probably took place late in 1951.

8. Reqn. G9/5523/1 (1951).**Change of Perforation.**

This was an order for 600 sheets each of 3c. labels in deep green (earlier printings were listed as green) and 8c. labels in yellow-orange and 1000 sheets each of 5c. in vermilion (instead of scarlet) and 20c. in blue, to be packed in bundles of 500 sheets (3c., 5c., 8c.) or 100 sheets (20c.). Specimens were required for His Majesty (4) and Waterlow (6). The plates were released to Waterlow on 6 June 1951. They were shipped on 20 August (585 sheets 3c., 959 5c., 600 8c., 984 20c.). The Bureau ("A/2") received 100 sheets of 3c. and 8c., which they had "not previously stocked", and exchanged 149 sheets of 5c. and 20c.

Notes: This printing was marked by a change of perforation from line 14.8 x 14.1 to line 14.2. It was printed on smooth paper.

Variety:

The substitute crown variety (see Chapter 3) is likely to occur on this printing, but has not been reported.

Issue date:

The new printing was released on 8 August 1951 but there is some question over the issue date of the 3c.⁶, which is listed in the catalogues as not released until 21 August 1952. Earliest use dates reported to the author were 29 December 1951 (20c.), 5 January 1952 (5c.), 5 January 1953 (3c.), 10 February 1953 (8c.).

No.	S.G.	I.S.C.		Mint	Used
36P.4.1	D16	D16	3c.	<input type="checkbox"/>	<input type="checkbox"/>
36P.4.2	D18	D18	5c.	<input type="checkbox"/>	<input type="checkbox"/>
36P.4.3	D19	D19	8c.	<input type="checkbox"/>	<input type="checkbox"/>
36P.4.4	D21	D21	20c.	<input type="checkbox"/>	<input type="checkbox"/>

9. Reqn. G9/7016/1 (1952).

This was an order for 500 sheets of the 1c., plus reprints of 850 sheets of 3c., 700 sheets of 5c., 450 sheets of 8c. and 1300 sheets of 20c. labels. The plates were released to Waterlow on 6 May 1952. 1c. specimens were required for Her Majesty (4) and Waterlow (6). They were shipped on 22 July by insured parcel post as follows:

Value	Sheets to Malaya	Sheets to Bureau	Exchanged by Bureau
1c.	520	100	6330 stamps
3c.	856	50	8930 stamps
5c.	700	-	13,770 stamps
8c.	461	50	9330 stamps
20c.	1297	-	13,950 stamps

Notes: The 1c. had the new perforation and was now printed in violet.

Variety:

This printing was on smooth paper. The substitute crown variety (see Chapter 3) is likely to occur on this printing, but has not been reported.

Issue date:

The 1c. was released on 21 August 1952 but the other values were introduced as stock levels required, probably during the latter part of 1952. The earliest use date for the 1c. reported to the author was 10 February 1953.

No.	S.G.	I.S.C.		Mint	Used
36P.5.1	D14	D14	1c.	<input type="checkbox"/>	<input type="checkbox"/>

10. Reqn. G9/8386/1 (1952).

This order was for reprinting 600 sheets of the 3c., 1100 sheets of the 5c. and 2600 sheets of the 8c.. The 8c. was urgently needed on territory, so 13,120 labels were to be taken from Crown Agents Stamp Bureau stock and dispatched "as soon as possible".

The 8c. labels from stock were shipped on 14 October 1952 and would be from the previous 1952 printing and possibly some remainders from the 1951 printing.

The three plates for the new order were released to the printer on 11 December 1952. The order was shipped in two consignments. On 5 March 1953, 2711 sheets of 8c. labels and part of the order for 5c. labels were dispatched, followed on 16 March 1953 by 625 sheets of the 3c. and the balance of 1317 sheets of the 5c. The Bureau ordered 100 sheets of all values and duly received 100 sheets of the 3c. and 5c. 128 sheets each of 3c. and 5c. were returned to the printers in exchange for shipment as part of the order. Because 13,120 8c. labels had been sent to territory from Bureau stock, the Bureau received 231 sheets of that value, of which 131 were officially replacement stock. Specimens were limited to Her Majesty (4) and the printer (6).

Variety:

The substitute crown variety (see Chapter 3) is likely to occur on this printing, but has not been reported.

Issue date:

The reprinted labels could have appeared on sale from the middle of 1953 onwards.

11. Reqn. G9/8788/1 (1953).

This order was initially for reprinting 600 (later increased to 4600) sheets of the 1c., 1000 sheets of the 8c. and 600 sheets of the 20c.. The 1c. and 8c. were to be parcelled in packs of 500 sheets and the 20c. in 100s.

The need for 1c. labels on territory was again urgent, so 100 sheets from 1951-1952 printings were taken from the Bureau stock and mailed by air parcel post "immediately" on 15 May 1953. There was also a not-quite-as-urgent need for 3c. and 5c. labels, so 150 sheets of each value were sent from the Bureau stock by ordinary parcel post on the same day under this same requisition.

The three plates were released to the printer on 3 March 1953 before the previous order for 8c. labels had been shipped, so for the 8c. plate it may have been just a paper transaction. The order was shipped in three consignments. On 22 June, 500 sheets of 1c. labels, 1000 sheets of 8c. and 625 sheets of 20c. were dispatched by insured parcel post, followed on 1 July by 100 sheets of 1c. by air parcel post and on 17 November by the additional order for 4026 sheets of 1c. by ordinary parcel post.

The Bureau ordered 100 sheets each of 1c. and 20c., but no 8c. (having just received a huge stock). The Bureau's 1c. order was later raised to 200 sheets to compensate for those sent to Malaya by air in May. 129 sheets of 1c., 230 sheets of 8c. (from Requisition G9/8386/1) and 120 sheets of 20c. were returned to the printer for exchange and inclusion in the shipment. The Requisition Book stated under 20c. "Includes 10,000 in replacement", but the significance is unclear. Specimens were limited to Her Majesty (4) and the printer (6).

Variety:

The substitute crown variety (see Chapter 3) is likely to occur on this printing, but has not been reported.

Issue date:

The reprinted labels could have appeared on sale from the autumn of 1953 onwards.

12. Reqn. G9/9329/1 (1953).**New values.**

This order was for printing 3180 sheets each of a new 2c. deep slate blue and a new 4c. sepia and 4180 sheets of a new 12c. bright purple. Of these, the 2c. was a completely new value. They were to be parcelled in packs of 500. To meet an urgent need, the first 500 sheets each of the 2c. and 4c. were to be sent "as soon as ready" by air.

Proofs of the 4c. and 12c. were approved by the Crown Agents Inspector of Stamps on 26 June 1953. The 2c. was approved on 17 August. The Crown Agents were charged £22-13-4 by Waterlow for a sketch, 100-set line block and 100-set printing plate for the 2c. value. The 4c. and 12c. used the existing plates. The three plates were released to the printer on 21 August. The urgent part of the order was shipped by air parcel post on 24 September. The balance (2590 sheets of 2c., 2630 4c. and 3995 sheets of 12c.) was shipped on 29 October. The Bureau ordered 180 sheets of each value of these new values. Specimens were sent to the GPO (379), HM (4), BM (1), CA (1), CI (1), CO (3) and the printer (7).

Notes: Rough, thick paper was used.

Sheet markings:

The margins contained "Jubilee" lines which differed from value to value but were constant throughout the life of the issue. The 2c. had 3mm bars adjacent to each label with breaks between labels and no corner pieces.

Varieties:

The substitute crown variety (see Chapter 3) is likely to occur on this printing, but has not been reported. Varieties that were reported to be constant on these new values are as follows:

No.	Value	Position	Variety
v1	2c.	R2/2	Naked eye dot above left bottom triangle.
v2		R2/8	Top stroke of "E" in "DUE" longer.
v3		R3/1	Dot in upper loop of "S" of "POSTAGE".
v4		R3/4	Break on outer frame below "E" of "DUE".
v5		R5/2	Break in outer frame below "S" in "POSTAGE" and dot below side ornament at right.
v6		R5/5	Figure-of-eight flaw above side ornament at left.

Issue date:

The air-mailed 2c. and 4c labels were released on 16 November 1953 and the sea-mailed 12c. on 1 February 1954. Earliest use dates reported to the author were 29 March 1954 (4c.), 10 November 1954 (2c., 12c.).

No.	S.G.	I.S.C.		Mint	Used
36P.6.1	D15	D15	2c.	<input type="checkbox"/>	<input type="checkbox"/>
36P.6.2	D17	D17	4c.	<input type="checkbox"/>	<input type="checkbox"/>
36P.6.3	D20	D20	12c.	<input type="checkbox"/>	<input type="checkbox"/>

13. Reqn. G9/314/1 (1953).

This order was for reprinting 10,050 sheets of the 8c. yellow-orange and 2100 sheets of the 20c. blue. They were to be parcelled in packs of 500 and 100 sheets respectively.

The 8c. and 20c. plates were released to the printer on 30 October 1953. The order was shipped on 15 January 1954, consisting of 9805 sheets of 8c. and 2112 sheets of 20c. The Bureau ordered 50 sheets of 8c. and 100 sheets of 20c. 220 sheets of 8c. and 115 sheets of 20c. were returned to the printer. Specimens were limited to HM (4) and the printer (6).

Variety:

The substitute crown variety (see Chapter 3) is likely to occur on this printing, but has not been reported.

Issue date:

The reprinted labels could have appeared on sale from the spring of 1954 onwards.

14. Reqn. G9/7998/1 (1957).**Change of Perforation.**

This order was for reprinting 2000 sheets of the 20c. blue. They were to be parcelled in packs 100 sheets. Plates were released on 22 May 1957. No specimens were requested. 2030 sheets were shipped by insured parcel post on 1 July 1957, of which 311 sheets were old material exchanged by the Crown Agents Stamp Bureau.

Notes: This issue was marked by a second change in perforation, this time from line 14.2 to line 12.6. The printing was on rough, thick paper, of slightly better quality than the previous issue. The shade was now described as deep blue instead of blue.

Variety:

The ordinary paper gave no significant UV reaction.⁷ A 20c. has been seen used with green fluorescence. This cannot be attributed to a specific printing and may have been stray fluorescence from another stamp. The substitute crown variety (see Chapter 3) is likely to occur on this printing, but has not been reported.

Issue date:

This label was released by the Bureau on 10 December 1957. The earliest used example reported to the author was dated March 1960.

No.	S.G.	I.S.C.		Mint	Used
36P.7.1	D21a	D21a	20c. Deep blue.	<input type="checkbox"/>	<input type="checkbox"/>

15. Reqn. G9/6005/1 (1960).

This order was for reprinting without inspection 1020 sheets of the 2c., 700 4c. and 600 20c.. They were to be parcelled in packs 500 sheets (20c. 100 sheets). No specimens were requested. Some 2c. were shipped by parcel post on 19 October 1960, the remainder following on 2 November, making a total of 920 2c., 600 4c. and 613 20c. The Bureau took 100 sheets each of the 2c. and 4c., and exchanged 20 sheets of 2c., 40 sheets of 4c. and 230 sheets of 20c.

Variety:

The substitute crown variety (see Chapter 3) is likely to occur on this printing, but has not been reported.

Issue date:

As the new perforation was involved, the 2c. and 4c. were given a Bureau release on 15 November 1960, but may not have come into use in Malaya until later. Earliest used examples reported to the author were 21 July 1961 (both).

No.	S.G.	I.S.C.		Mint	Used
36P.8.1	D15a	D15a	2c.	<input type="checkbox"/>	<input type="checkbox"/>
36P.8.2	D17a	D17a	4c.	<input type="checkbox"/>	<input type="checkbox"/>

16. Reqn. G9/52/1 (1962).**New Printer.**

Following the decision by Waterlow to withdraw from stamp printing, the contract passed to De La Rue in 1961 and the first reprints appeared in 1962-1963. The same plates remained in use.

The first order was for reprinting 1500 sheets of the 2c., 1470 sheets of the 4c., 420 sheets of the 12c. and 600 sheets of the 20c. They were to be parcelled in packs of 500 sheets (100 sheets in the case of the 20c.).

The order was shipped in two batches on 27 April and 15 May 1962, totally 1255 sheets of 2c., 1221 4c., 172 12c. and 602 20c. In addition, the Bureau ordered 250 sheets each of the 2c., 4c. and 12c., but did not order the 20c. Instead, they exchanged 220 sheets of the previous 20c., together with 50 sheets of 2c., 80 4c. and 60 12c. for the new printing. Specimens were supplied CA (1), and CB (1).

Notes: These DLR printings could be distinguished by the change from ordinary paper to smooth chalk-surfaced paper, without changing the watermark. The chalk-surfaced paper continued to give no significant reaction under ultra-violet light, but the 12c. was printed using red-fluorescent ink. The paper gave an apparent change in colour, with the 4c. now described as bistre-brown instead of sepia. The line perforations measured 12.6 as before (the 12c. had not previously been printed with this perforation).

Varieties:

The 2c. of this issue is known with the horizontal lines of perforations omitted over the full length of the sheet (S.G. D15ac). The largest known piece of this error is the complete columns 9 and 10 with margins used on envelope at Tanglin on 21 May 1965.⁸

The substitute crown variety (see Chapter 3) is likely to occur on these printings, but has not been reported.

Issue date:

The Bureau release date for the 2c., 4c., 12c was 10 July 1962. However, the Bureau had not specifically ordered the 20c. and did not release it until 15 October 1963, having waited for stock from Reqn. G9/150/1 (below) before releasing examples of this label. It would be interesting to discover if earlier dates of local usage can be found.

No.	S.G.	I.S.C.		Mint	Used
36P.9.1	D15ab	D15b	2c.	<input type="checkbox"/>	<input type="checkbox"/>
36P.9.2	D17ab	D17b	4c.	<input type="checkbox"/>	<input type="checkbox"/>
36P.9.3	D20a	D20a	12c.	<input type="checkbox"/>	<input type="checkbox"/>
36P.9.4	D21ab	D21b	20c.	<input type="checkbox"/>	<input type="checkbox"/>

17. Reqn. G9/150/1 (1963).

This was an urgent order for reprinting 400 sheets of the 20c., parcelled in packs of 100 sheets. 360 sheets were shipped by insured parcel post on 27 September 1963. The Bureau exchanged a further 220 sheets.

Variety:

The substitute crown variety (see Chapter 3) is likely to occur on these printings, but has not been reported.

Issue date:

The Bureau did not release the 20c. until 15 October 1963 because of its failure to order the 20c. to Reqn. 52/1 (see above).

18. Reqn. G9/191/1 (1964).**Block CA Watermark.**

This order was for reprinting without inspection 400 sheets of the 2c., 700 4c., 400 12c. and 950 20c. An order for 530 sheets of 1c. was added on 23 January 1964. They were to be parcelled in packs 500 sheets (20c. 100 sheets). No specimens were requested of the initial order content, but the 1c. was the first DLR printing of that value, so specimens were produced for CA 1, CB 1 and DLR 2.

The whole order was shipped on 18 February 1964 by insured parcel post, comprising just 30 sheets of the 1c, 400 2c., 700 4c., 400 12c. and 950 20c. The Bureau took the other 500 sheets of the 1c. and exchanged 23,000 2c., 27,000 4c., 25,000 12c., 19,000 20c. labels.

Notes: This issue was printed on smooth chalk-surfaced paper with watermark Multiple St. Edward's Crown Block CA upright (sideways reading down on 1c.) and gave a minimal fluorescent reaction under ultra-violet light. The perforation remained 12.6 line. The 1c. and 12c. were printed with inks having a red fluorescent reaction under UV light, the 1c. now being listed as maroon. There were no other differences from the preceding issue.

Issue date:

As the new watermark was involved, they were given a Bureau release on 14 April 1964, but may have come into use in Malaya earlier. Postally-used examples of this issue are scarce, many being cancelled-to-order. Earliest used examples reported to the author were 9 September 1964 (12c.), 28 January 1965 (2c., 4c.), 9 March 1965 (20c.), none reported (1c.).

No.	S.G.	I.S.C.		Mint	Used
36P.10.1	D22	D22	1c.	<input type="checkbox"/>	<input type="checkbox"/>
36P.10.2	D23	D23	2c.	<input type="checkbox"/>	<input type="checkbox"/>
36P.10.3	D24	D24	4c.	<input type="checkbox"/>	<input type="checkbox"/>
36P.10.4	D27	D26	12c.	<input type="checkbox"/>	<input type="checkbox"/>
36P.10.5	D28	D27	20c.	<input type="checkbox"/>	<input type="checkbox"/>

19. 15 December 1964.**Provisional Overprint.**

On 16 November 1964, the inland letter rate in Malaysia rose from 10c. to 15c. As letters posted with the old 10c. stamps were 5c. deficient and the postage due fee was double the deficient postage, there was a sudden demand for 10c. postage due labels. As there was no 10c. value in the current series, surplus stocks from one or more of the 1951-1953 period printings of the 8c. label (perf. 14.2) were overprinted locally by Government printers, initially on existing stocks with tropicalised (brown) gum, but later on a newer printing with fresh gum.

Settings:

There were two settings of this overprint:

- Setting A: 5¾ mm between lines (10½ mm overall). It was closer-spaced than the labels, both horizontally and vertically. This resulting in the labels having progressively higher and further left surcharges as one progressed down and across the sheet;
- Setting B: 6½ mm between lines (11½ mm overall).

Complete sheets have been seen with each setting.

Varieties:

A number of overprint varieties were reported, notably:

No.	Setting.	Position.	Variety.
o1	A	R5/6	Bar in "e" of "cents" wholly missing or partly missing at left.
o2	A	R7/6	Missing bar in "e" of "cents".
o3	A	R8/5	Slightly heavier "n" in "cents".

The substitute crown variety (see Chapter 3) is likely to occur on these stamps, but has not been reported.

Issue and Withdrawal:

They were made available for use in all post offices on 15 December 1964. ⁹ Setting A is known used between 17 and 24 December 1964 at Kota Bharu, Kelantan.

The issue was withdrawn on 15 August 1966 in Malaysia and 31 January 1968 in Singapore.

No.	S.G.	I.S.C.		Mint	Used
36P.11.1	D29	D28	10c. on 8c. Setting A.	<input type="checkbox"/>	<input type="checkbox"/>
36P.11.1a	-	-	- Setting B.	<input type="checkbox"/>	<input type="checkbox"/>

20. Reqn. G&P/Malaya/4/90699/2 (1964).

Pending availability of the order below, 30 sheets of 2c. and 170 sheets of 4c. were ordered to be sent by insured air parcel post and 180 sheets of 1c., 220 8c., 100 12c. and 40 20c. by insured parcel post. All were supplied by the Bureau on 14 December 1964 (2c. and 4c. being sent by air as requested).

21. Reqn. G&P/Malaya/4/90699/1 (1964).**Change of Perforation.**

This order was for reprinting without inspection 1320 sheets of the 1c., 4220 2c., 3080 4c., 1030 8c., 650 12c. and 710 20c. They were to be parcelled in packs of 500 sheets (100 sheets in the case of the 20c.). No specimens were requested.

The order was shipped as follows:

Value	Shipped	Sheets to Malaya	Sheets to Bureau
1c.:	24 March 1965	654	500
	28 July 1965	166	-
2c.:	23 January 1965	4000	250
4c.:	23 January, 24 March 1965.	2830	250

Value	Shipped	Sheets to Malaya	Sheets to Bureau
8c.:	24 March 1965	780	250
12c.:	24 March 1965	400	250
20c.:	24 March 1965	460	250

Presumably there was an objection at the initial shortfall of 1c. compared with the originally order, as a reprint took place under the same requisition and a further 166 sheets were sent on 28 July.

Notes: The chalky coating was thinner and rougher than the previous issue, giving a low fluorescence under UV light. The 12c. again used red-fluorescent ink. The line perforations measured 12.2 instead of 12.6. The watermark of the 1c. was changed from watermark sideways to upright.

Issue and Withdrawal:

Postally used examples of this issue in Malaysia are rare, most being cancelled-to-order. Bureau release dates were 9 March 1965 (2c., 4c.) and 4 May (rest). Earliest used examples reported to the author were 27 July (4c.), 15 November (2c., 12c.), 19 July 1966 (8c.), Not seen (20c.).

The issue was withdrawn after business on 14 August 1966 in Malaysia and 31 January 1968 in Singapore.

No.	S.G.	I.S.C.		Mint	Used
36P.12.1	D22a	D22a	1c.	<input type="checkbox"/>	<input type="checkbox"/>
36P.12.2	D23a	D23a	2c.	<input type="checkbox"/>	<input type="checkbox"/>
36P.12.3	D24a	D24a	4c.	<input type="checkbox"/>	<input type="checkbox"/>
36P.12.4	D25	D25	8c.	<input type="checkbox"/>	<input type="checkbox"/>
36P.12.5	D27a	D26a	12c.	<input type="checkbox"/>	<input type="checkbox"/>
36P.12.6	D28a	D27a	20c.	<input type="checkbox"/>	<input type="checkbox"/>

22. Reqn. 6/14281/1 (Singapore) (1966).

New Perforation and Paper.

No 50c. label had been issued since the December 1947 printing. Heavily aged copies of that printing were still held and in use at GPO Kuala Lumpur (despite the introduction of Malaysia postage dues) and various Singapore post offices as late as 1968. However, on 29 January 1968, two days before the issue was withdrawn from sale, the late Mr. Derek Clayton discovered seemingly freshly printed stocks of the label on this new watermark at the GPO Singapore. He purchased 25. Only seven other mint copies were known by 1993.

This unheralded order was placed on 25 March 1966 by a Singapore Government indent and was for 10 000 labels (100 sheets) for use in Singapore only as an interim measure until the independent Singapore postage due issue became available (it was eventually issued on 1 February 1968). The Requisition was for twice this quantity (200 sheets), DLR supplying 100 to Singapore on 19 May 1966 and the other 100 to the Bureau, which did not release them to collectors. As this was the first (and only) DLR printing of this value, specimens were produced for CA (1) and CB (1).

Notes: The unsurfaced paper had watermark Multiple St. Edward's Crown CA upright. The line perforations were said to measure 14.8 x 14.1, as used on the 1938 issue.

Issue and Withdrawal:

So far as is known, it was indeed only used in Singapore. Only five used copies had been traced by 1993, a single used at Thompson Road Delivery Office and a block of four at Katong on 15 November 1966.

The 50c. label was withdrawn on 31 January 1968 in Singapore.

No.	S.G.	I.S.C.		Mint	Used
36P.13.1	D30	D29	50c.	<input type="checkbox"/>	<input type="checkbox"/>

The Malayan Postal Union labels were replaced by independent issues for Malaysia and Singapore.

NOTES

- ¹ 4c. and 50c. labels (the latter with a slightly chalky surface) exist with a slight fluorescence, presumably from a later requisition. A 50c. with ordinary paper but a distinct yellow fluorescence has also been seen, probably the result of contamination.
- ² Varieties mostly reported by Mr. R. E. Hale in TMP 24/20 or by Mr. M. Cheah in TMP 25/31.
- ³ Reported by Mr. R. E. Hale in TMP 24/20 as having existed since the earliest 8c. value. Also reported in error in some sources as Row 3/4.
- ⁴ 1900-2001, Chief Inspector at the Crown Agents.
- ⁵ Reported by Mr. D. R. M. Holley in TMP 9/42.
- ⁶ 3c. Included in this requisition but not listed in the catalogues as being released until 21Aug52. Mr. D R M Holley gives the 3c as issued on 8Aug51 in TMP9/42, which ties in with remainder of this printing. Earliest use reported (J Robertson) to author: 5Jan1953 in Singapore, 10Feb1953 in Perak, 24Apr1953 in Selangor.
- ⁷ A 20c. has been seen used with green fluorescence. This cannot be attributed to a specific printing and may be stray fluorescence from another label.

-
- ⁸ On large brown envelope addressed to Major P.J. Hills together with two blocks of ten 10c. overprints. Offered by SG auction 26Apr2018.
- ⁹ 10c. on 8c. Recorded in letter from Pengarah Pos, KL. Earliest use reported (J Robertson) to author: 2Jan1965 in Johore, 9 March 1965 in Negri Sembilan, 10May1965 in Perak, 31May1965 in Singapore, 27Jul1965 in Penang.