

SECTION 3 – MALAYSIA DEFINITIVE ISSUES

CHAPTER THIRTEEN

SABAH & SARAWAK ISSUES 1963-1965.

The pre-Independence definitive issues of North Borneo and Sarawak continued in use until replaced by Malaysia's 1965 Definitive Issue. In the case of North Borneo, the change of state name to Sabah resulted in the overprinting of stamps with the new name in 1964. The unoverprinted stamps remained valid for postage until 1970. In order to put the Sabah overprinted issues in context, it is essential to first describe the printing history of the North Borneo 1961 Definitive Issue. It then makes sense to treat the Sarawak 1955 Definitive Issue similarly and, for completeness, to consider the Freedom From Hunger commemorative stamps issued during 1963.

1. NORTH BORNEO / SABAH DEFINITIVE ISSUES

1 February 1961.

North Borneo - 1961 Definitive Issue.



This second definitive issue of the Queen's reign replaced the designs that had been inherited from the late King George VI and which had been modified by the substitution of the Queen's Head. Adapted from drawings by Mr. Chong Yun Fatt of the Department of Agriculture, this issue comprised 18 counter sheets in the North Borneo tradition of having a wide range of face values.

Designs:

The stamps showed:

- 1c.: Sambar Stag (Payau, *Cervus unicolor*);
- 4c.: Sun bear (*Helarctos malayanus*);
- 5c.: Borneo Clouded Leopard (described at the time as *Felis* (later *Neofelis*) *nebulosa*, the Borneo Clouded Leopard was recognised as a separate species (*Neofelis diardi*) in April 2007);
- 6c.: Dusun woman with gong;

- 10c.: Map of Borneo;
 12c.: Banteng (Tembadau, *Bibos sondaicus* [now *Bos javanicus*]);
 20c.: Butterfly orchid (*Phalaenopsis amabilis*);
 25c.: Sumatran (or Asiatic two-horned) Rhinoceros (*Rhinoceros sumatrensis* [now *Dicerorhinus sumatrensis*]);
 30c.: Murut man with blow-pipe;
 35c.: Mount Kinabalu, ("The Chinese Widow", 13,455 feet above sea level);
 50c.: Dusun man and buffalo transport;
 75c.: Bajau horseman;
 \$1: Orang Utan (Mias, *Simia satyrus* [now *Pongo pygmaeus*]);
 \$2: Rhinoceros hornbill (*Buceros rhinoceros*);
 \$5: Crested Wood Partridge (*Rollulus roulroul*);
 \$10: Coat of Arms of North Borneo.

It should be noted that the Latin names for some mammals have changed since the issue was released. The first Latin names quoted are those included in the contemporary press release, unless otherwise stated.

The Queen's portrait was taken from photographs taken by Dorothy Wilding and showed Her Majesty wearing the "diamond scroll tiara with diamond points" which was originally given to Queen Mary in 1893 on the occasion of her wedding to (later) King George V by "the young ladies of Great Britain and Ireland". The photographs were by Dorothy Wilding Ltd., reference number O 15924 I.

Counter sheets:

The low values were 36mm x 29mm and the high values were 29mm x 36mm. The initial printing was carried out without inspection by Waterlow and Sons by two-colour copper-plate intaglio in sheets of 100 (10 x 10). Printing colours were (centre colour followed by frame colour): 1c.: emerald and brown-red; 4c.: bronze-green and orange; 5c.: sepia and violet; 6c.: black and pale blue-green; 10c.: green and red; 12c.: brown and grey-green; 20c.: blue-green and ultramarine; 25c.: grey-black and scarlet; 30c.: sepia and olive, 35c.: slate-blue and red-brown; 50c.: emerald and yellow-brown; 75c.: grey-blue and bright purple; \$1: brown and yellow-green; \$2: brown and slate; \$5: emerald and maroon; \$10: carmine and blue. The magenta used for the 75c. was fluorescent. The 6c., of which there were four printings, appeared in at least two distinct shades, the frame of one being pale blue-green, while the other is grey-green. Early printings of the 30c. had a dark sepia shade, while later ones (including the overprinted version) had a lighter centre.

Waterlow initially made two blank-duty border ("casement" in Waterlow terminology) dies, one for the cents values and one for the dollar values. They were then duplicated using two separate 2-set transfer rollers to produce "original" dies for each value, sixteen in all. Sixteen vignette dies were also produced. The border and vignette dies were then used to produce separate plates¹ for each colour, using a separate 2-set transfer roller for each die (except 10c., which was 1-set). Making the dies and plates cost £3226 and they were stored at Waterlow's works when not in use. The printer's imprint appeared in the centre of the bottom sheet margin. Die and plate numbers were as follows:

Value	Border Die	Border Plate	Vignette Die	Vignette Plate	Value	Border Die	Border Plate	Vignette Die	Vignette Plate
1c.	21990	19925 ²	21977	19963	30c.	22010	19927	21999	19928
4c.	21991	19936	21978	19937	35c.	22011	19940	22000	19970
5c.	21992	19935	21979	19913	50c.	22012	19948	22001	19949
6c.	21993	19934	21980*	19999*	75c.	22013	19939	21986	19912
			22106	20056	\$1	21974	19921	22002	19917
10c.	22004	19945	21981	19977	\$2	21975	19959	22003	19972
12c.	22005	19941	21982	19920	\$5	21976	19951	22006	19971
20c.	22008	19938	21983	19944	\$10	21989	19965	22007	19962
25c.	22009	19929	21998	19924					

* The original 6c. vignette die and plate order was cancelled by the Crown Agents on 1 December 1960 and replacements produced later. It is assumed that there was a feature of the original design that was unacceptable. This also explains the late delivery dates for this value (see below).

The border plate number appeared below R10/9 and the vignette plate number below R10/10. All values originally had border plate 1 and vignette plate 1. Only one replacement plate was recorded on the unoverprinted issue. 1c. border plate 2 was released by the Crown Agents on 10 July 1963 (see item 5 in the Requisition history below).

This issue had ordinary paper (without significant fluorescent reaction) with watermark Multiple St. Edward's Crown Block CA upright. The comb perforation measured 13.2 x 12.8 (cents) or 12.8 x 13.2 (dollars). Waterlow printings had the bottom margin imperforate and the others perforated through. De La Rue printings had the top margin imperforate, top perforated through and sides either perforated through or with a single extension hole.

Varieties:

Varieties reported include:

Value	No.	Position	Variety
1c.	v1	R3/3	Spot on "R" of "BORNEO".

Value	No.	Position	Variety
10c.	v1	?	Break in inner frame line to right of Mindanao island.
	v2	?	Break in inner frame line to right of Celebes islands.

Requisition history:**General note:**

With the exception of the stamps supplied to the Crown Agents Stamp Bureau for philatelic distribution, the sheets were interleaved with waxed paper and parcelled in bundles of 500 sheets, which remained the practice throughout the issue's life, with and without overprint. The sheets of each new batch shipped to Borneo were numbered from "1" separately for each value ("duty"). Waterlow applied numbers in black above column 10. De La Rue normally numbered sheets in red above column 9. Numbers were normally 5 digits, but 3 and 4-digit numbers are known. Bureau stocks were not numbered at the time of printing, but any sheets subsequently sent to Borneo from the Bureau had to be interleaved and numbered (again from 1) before shipment. This practice continued to the end of the life of the issue in 1965.

1. Reqn. G9/4949/1 (1960).**Waterlow.**

Design approval took place in the summer of 1960. The border die proofs for the \$2 and \$5 stamps were approved, and signed by R. L. J. Ferne of the Crown Agents, on 24 May, but the vignettes were rejected at that stage. They were approved on 8 July together with the vignettes for the 10c. and 35c. The 6c. vignette was rejected, but approved later. Approval dates of other values were not recorded.

Quantities ordered and shipped are listed below. Specimens were ordered for GPO (408+6), PP (100), CA (1), CB (1), BM (1), CO (3), II (1), W&S (1) and HM. (For translation of codes, see Chapter 3 in Volume 1).

Value	Sheets ordered	Shipped	Sheets printed	Sheets to Bureau
1c.:	20,000	7, 28 November 1960	20,457	7500
4c.:	25,000	13 September, 7 November 1960	26,463	2500
5c.:	20,000	13 September, 7 November 1960	21,500	2500
6c.:	10,000	21 January 1961	10,000	2500
10c.:	20,000	7, 28 November 1960	21,500	2000
12c.:	40,000	13 September, 7 November 1960	43,000	2000
20c.:	40,000	7, 28 November 1960	42,500	2000
25c.:	7500	24 August, 7 November 1960	7600	2000
30c.:	7500	13 September, 14 November 1960	8000	2000
35c.:	15,000	28 November 1960, 26 January 1961	15,000	2000
50c.:	10,000	14 November 1960, 21 January 1961	10,000	1500
75c.:	5000	7 November 1960	5133	1500
\$1:	3000	7 November 1960	3200	1000
\$2:	2000	7 November 1960	2100	1000
\$5:	1000	7 November 1960	1050	500
\$10:	1000	7 November 1960	1050	500

Notes: This was the only Waterlow printing. It was originally intended to release this issue in 1961, but production and delivery problems resulted in the issue date being postponed to 1 February 1961.

De La Rue:

Following the decision by Waterlow to withdraw from stamp printing, the contract for all subsequent reprints passed to De La Rue, using the Waterlow plates. The printer's imprint in the centre of the bottom sheet margin was changed from the Waterlow text to De La Rue text as reprints became necessary. De La Rue did not reprint the 4c., 20c., 35c., 50c., 75c., \$5, \$10 without "SABAH" overprint.

2. Reqn. G9/7394/2 (November 1961).**Bureau.**

Pending arrival of the reprint below, 1500 sheets of the Waterlow 6c. were shipped to North Borneo from the Bureau by insured parcel post on 8 November 1961.

3. Reqn. G9/7394/1 (November 1961).**De La Rue.**

Reprint 10,500 sheets of 1c., 7000 6c., 2000 \$1 and 2000 \$2. First DLR printing. Specimens ordered were GPO 2, CA 1, CB 1 and DLR 2. Shipment was as follows:

Value	Shipped	Sheets to Borneo	Sheets to Bureau	Sheets exchanged by Bureau
1c.:	7 December 1961, 24 January 1962	4500	6000	28
6c.:	7 December 1961, 24 January 1962	7000	-	2140
\$1:	23 November 1961	2000	-	840
\$2:	23 November 1961	2000	-	855

Notes: Bureau released on 16 January 1962 (\$1, \$2), 6 February (1c.), 6 March (6c.). At some stage, De La Rue had to make a new transfer roller for the 6c.³, but there is no reference to them ever making a new plate for this value. How the Bureau exchanged 2140 sheets of 6c. is not clear as it had only 2500 sheets from the original printing to start with and it had sent 1500 of those to Borneo in November 1961!

4. Reqn. G9/7859/1 (1962).

De La Rue.

Reprint 7000 sheets of 1c., 8000 5c., 12,000 6c., 17,000 10c., 1800 30c. and 750 \$1. As this was the first DLR printing of the 5c., 10c. and 30c., special care was to be taken to check the perforations before printing commenced. Specimens of those values were needed for CA (1), CB (1) and DLR (2). Shipment was as follows:

Value	Shipped	Sheets printed	Sheets to Bureau	Sheets exchanged by Bureau
1c.:	8 May, 10 May, 28 August 1962	7200	-	-
5c.:	8 May, 10 May, 4 June 1962	8370	-	1870
6c.:	1 March, 10 May 1962	12,590	1000	2110
10c.:	1 March, 13 June 1962	17,650	-	1650
30c.:	13 June 1962	1803	-	1710
\$1:	13 June 1962	755	-	820

Notes: The values other than 1c. were released by the Bureau on 10 July 1962. According to Crown Agents records, the Bureau did not take any of this 1c. printing, so what did it sell to collectors when it made a release on 11 September 1962?

5. Reqn. G9/9130/1 (1962).

De La Rue.

Reprint without inspection 1500 (increased to 4200 on 25 January 1963) sheets of 1c. Shipment was of 1750 sheets on 15 July 1963. The Bureau took 2450 sheets and exchanged 400 sheets.

Notes: 1c. border plate 2 was used for the first time. Bureau announced its release on 10 July 1963, five days before shipment of the printing to North Borneo.

6. Reqn. G9/9226/1 (1963).

De La Rue.

Reprint without inspection 5100 sheets of 6c., 7000 sheets of 10c., 5600 sheets of 12c., 2400 sheets of 25c. and 2800 sheets of 30c. As these were the first DLR printings of the 12c. and 25c., specimens were supplied to CA 1, CB 1 and DLR 2. Shipment was as follows:

Value	Shipped	Sheets to Borneo	Sheets to Bureau	Sheets exchanged by Bureau
6c.:	12 September, 15 November 1963	4697	500	1530
10c.:	12 September, 15 November 1963	7025	-	1620
12c.:	12 September, 18 October 1963	5636	-	1670
25c.:	18 October 1963, 16 January 1964	1996	500	1680
30c.:	18 October 1963	2800	-	1700

Notes: The Bureau released the reprints on 4 December 1963 (6c., 10c., 12c., 30c.). Any Bureau release of the 25c. went unrecorded.

Issue and Withdrawal:

There was no official first day cover.

Stamps of the previous issue were withdrawn from all offices at the end of business on 31 January 1961.

The unoverprinted stamps were withdrawn on 30 June 1964.

Both issues were invalidated on 1 April 1970.

CHECK LIST (Without overprints)

No.	S.G.	I.S.C.		Mint	Used
61D.1.1	391	355	1c.	<input type="checkbox"/>	<input type="checkbox"/>
61D.1.2	392	356	4c.	<input type="checkbox"/>	<input type="checkbox"/>
61D.1.3	393	357	5c.	<input type="checkbox"/>	<input type="checkbox"/>
61D.1.4	394	358	6c. black & blue-green.	<input type="checkbox"/>	<input type="checkbox"/>
61D.1.4a		358a	- black & deep slate-green.	<input type="checkbox"/>	<input type="checkbox"/>
61D.1.5	395	359	10c.	<input type="checkbox"/>	<input type="checkbox"/>
61D.1.6	396	360	12c.	<input type="checkbox"/>	<input type="checkbox"/>
61D.1.7	397	361	20c.	<input type="checkbox"/>	<input type="checkbox"/>
61D.1.8	398	362	25c.	<input type="checkbox"/>	<input type="checkbox"/>
61D.1.9	399	363a	30c. deep sepia and olive	<input type="checkbox"/>	<input type="checkbox"/>
61D.1.9a	-	363	30c. sepia and olive	<input type="checkbox"/>	<input type="checkbox"/>

No.	S.G.	I.S.C.		Mint	Used
61D.1.10	400	364	35c.	<input type="checkbox"/>	<input type="checkbox"/>
61D.1.11	401	365	50c.	<input type="checkbox"/>	<input type="checkbox"/>
61D.1.12	402	366	75c.	<input type="checkbox"/>	<input type="checkbox"/>
61D.1.13	403	367	\$1.	<input type="checkbox"/>	<input type="checkbox"/>
61D.1.14	404	368	\$2.	<input type="checkbox"/>	<input type="checkbox"/>
61D.1.15	405	369	\$5.	<input type="checkbox"/>	<input type="checkbox"/>
61D.1.16	406	370	\$10.	<input type="checkbox"/>	<input type="checkbox"/>
61D.1.17	-	-	First day cover (private).	-	<input type="checkbox"/>

1 July 1964.

SABAH Overprints.



Pending the availability of the new Malaysia definitive stamps in 1965, all values of the existing 1961 Definitive Issue of North Borneo were overprinted "SABAH" in block capitals over the existing "NORTH BORNEO" text. Both existing stock of both Waterlow and De La Rue printings repatriated from Borneo and new stock specially printed by De La Rue (including all the values not previously printed by De La Rue) were overprinted. The whole operation was covered by a single order using a two-part Requisition.

De La Rue submitted three alternatives for the overprint to the Crown Agents and reviewed by the Inspector of Stamps on 27 September 1963. A very small setting of "SABAH" was rejected. A broad setting was accepted for the landscape-format low values. A narrower setting had three horizontal lines at left and right. These lines were deleted and the narrower setting was used for the portrait-format high values, which had a smaller space available for overprinting. The original "die" for the overprint was set up in a 20-set forme containing the two formats, each 10-set. Fourteen 10-set electros were then produced of each type, two of the high value ones being discarded. Ten electros of the appropriate size were then made-up into a 100-set forme for printing.

The issue was originally announced for January 1964, but the operation took longer than expected.

A small number of used examples were known with "SABAH" handstamped in a similar type face to the issued overprint. Six used copies of the 12c. were reported in the Sarawak Journal 24/119 by "Agas" to have been found by a local dealer amongst kiloware, postmarked Jesselton (1964), Beaufort or Pensiangan. It has been suggested that these were local trials with a view to using up existing stock without the expense of shipping them back to the UK for overprinting, later released either in error or due to a stock shortage. Similar "non-standard" overprints have been reported on 4c., 25c. and 50c.

The newly printed stamps were essentially identical to the original issue, being printed (initially at least) from the original plates in original colours on the original paper. New 12c. border plate 2 (DLR plate number 599-2) was put into use to print the new stock intended for overprinting and was thus released only in this form on 1 July 1964. The majority of the overprinted stamps seen were on the original ordinary paper. However, a small number of 10c. stamps, including a copy dated 10 June 1965, were on a paper with a low, but distinct, white fluorescence under ultra-violet light. These are assumed to come from one of the later DLR printings.

Requisition History:

For such a short-lived issue, it is surprising that there were no less than five Crown Agents Requisitions.

1. Reqn. G9/9854/1 & Reqn. G9/9854/2 (1963).

Reqn. G9/9854/1 covered the printing costs of new stocks of stamps for overprinting, which were to be held by department G10 until needed.

Reqn. G9/9854/2 covered the movement costs involved in returning unoverprinted stocks from Jesselton to Britain for overprinting "SABAH", overprinting and interleaving the entire order and shipping the complete batch of overprints back.

Where the sum of these sources was less than the printing order, the Bureau supplied extra sheets from its stock to cover the shortfall. Specimens of each overprinted value required were GPO 454 + 6, PP 297 + 3 for CO, CA 1, CB 1, CI 1, BM 1, DLR 2, HM.

The complete order was as shown below. The sequence of actions appears to be that existing stock was overprinted first. Then, newly-printed stamps were overprinted, the first part being used to complete the Borneo order (which was shipped in batches as soon as sufficient quantities were ready) and the later part being used to supply the Bureau. Thereby, the Bureau took newly-printed stamps into stock in line with its normal exchange policy and ensured that, wherever possible, recycled stamps went back to Borneo.

- 1c.: 18,000 sheets were specially printed by De La Rue from border plate 2 and vignette plate 1, the job being completed on 25 May 1964. 15,600 sheets were shipped to Borneo on 2 April and 21 May. 3000 sheets were taken by the Bureau. (This implies that at least 600 sheets were supplied by the Bureau for overprinting.)
- 4c.: 8000 Waterlow sheets were returned from Borneo. 2500 overprinted sheets were shipped on 23 March 1964. 1500 sheets were specially printed by DLR - job completed 31 July. These were the first DLR printings of this value. 7000 sheets (three-quarters of the total) were taken by the Bureau, including some recycled material.
- 5c.: 9000 sheets (probably from the DLR reprint but possibly including some Waterlow material) were returned from Borneo. 6500 sheets were shipped on 23 March 1964. 1500 sheets were specially printed by DLR - job completed 31 July. 4000 sheets were taken by the Bureau, including recycled material.
- 6c.: 21,500 sheets were specially printed by DLR - job completed 31 July 1964. 19,429 sheets were shipped on 5 and 27 February 1964. 1500 sheets were taken by the Bureau. Considerable wastage appears to have occurred.
- 10c.: 21,500 sheets were specially printed by DLR - job completed 25 May 1964. At least 500 sheets were supplied from Bureau stocks. 20,500 sheets were shipped on 2 April and 21 May. 1500 sheets were taken by the Bureau.
- 12c.: 21,500 sheets were specially printed by DLR using new border plate 2 - job completed 25 May 1964. 16,500 sheets were shipped on 2 April and 21 May. 1500 sheets were taken by the Bureau. 3500 sheets were not accounted for - They may have been a rejected initial printing, as a result of which the new plate was produced.
- 20c.: 10,000 Waterlow sheets were returned from Borneo. 4000 overprinted sheets were shipped on 23 March 1964. 1500 sheets were specially printed by DLR - job completed 31 July. These were the first DLR printings of this value. 7500 sheets were taken by the Bureau, including some recycled material.
- 25c.: 6500 sheets were specially printed by DLR - job completed 31 July 1964. 5000 sheets were shipped on 23 April 1964. 1500 sheets were taken by the Bureau.
- 30c.: 6000 sheets were specially printed by DLR. At least 296 sheets were supplied by the Bureau. 5296 sheets were shipped on 23 March 1964. 1000 sheets were taken by the Bureau.
- 35c.: 5000 Waterlow sheets were returned from Borneo. 3000 overprinted sheets were shipped on 23 March 1964. 1000 sheets were specially printed by DLR. These were the first DLR printings of this value. 3000 sheets were taken by the Bureau, including some recycled material.
- 50c.: 3500 Waterlow sheets were returned from Borneo. 2000 overprinted returned sheets were shipped on 23 March 1964. 1000 sheets were specially printed by DLR - job completed 31 July. These were the first DLR printings of this value. 2500 sheets were taken by the Bureau, including some recycled material.
- 75c.: 1000 Waterlow sheets were returned from Borneo. 1000 sheets were specially printed by DLR - job completed 15 June 1964. These were the first DLR printings of this value. At least 1400 sheets were supplied from Bureau stock. 2400 sheets were shipped on 15 June 1964. 1000 sheets were taken by the Bureau.
- \$1: 1000 sheets (probably from the DLR reprint but possibly including some Waterlow material) were returned from Borneo. 1500 overprinted sheets were shipped on 2 April 1964, including some newly printed stock. 1500 sheets were specially printed by DLR - job completed 31 July. 1000 sheets were taken by the Bureau.
- \$2: 900 sheets (probably from the DLR reprint but possibly including some Waterlow material) were returned from Borneo. 500 sheets were specially printed by DLR. At least 300 sheets were supplied by the Bureau to make up the total order for 1700 sheets. 500 sheets were shipped on 15 May 1964. 1200 sheets were taken by the Bureau, including some recycled material.
- \$5: 50 Waterlow sheets were returned from Borneo. 750 sheets were specially printed by DLR - job completed 31 July 1964. These were the first DLR printings of this value. 298 sheets were shipped on 2 April 1964. 500 sheets were taken by the Bureau.
- \$10: 100 Waterlow sheets were returned from Borneo. 700 sheets were specially printed by DLR - job completed 31 July 1964. These were the first DLR printings of this value. 298 sheets were shipped on 2 April 1964. 500 sheets were taken by the Bureau.

Notes: The overprinted stamps were released on 1 July 1964. Without overprint, De La Rue did not reprint the 4c., 20c., 35c., 50c., 75c., \$5, \$10. The printings of these values for overprinting were the first by De La Rue. A 10c. sheet has been noted renumbered from 04932 to 01432, implying that this was returned stock, although there is no record of the return of any 10c. stock. Bureau sheets would not normally be numbered.

2. Reqn. G&P/Malaysia/4/87228/1 (December 1964?).

Reprint 3000 sheets of 1c., 20,000 sheets of 5c., 31,500 sheets of 10c., 3500 sheets of 20c., 3000 sheets of 30c. and 600 sheets of \$1. 1250 sheets of 4c. were added to the order on 15 February 1965. Shipment was as follows:

Value	Shipped	Sheets to Borneo	Sheets to Bureau
1c.:	9 April 1965	2000	1000
4c.:	insured parcel post 17 May 1965	500	750
5c.:	1 March, 9 April 1965	19,000	800
10c.:	1 March, 9 April 1965	29,684	650
20c.:	9 April 1965	3000	500
30c.:	9 April, 26 June 1965	2999	500
\$1:	9 April 1965	500	100

Notes: All newly printed stock. Released by the Bureau on 4 May 1965 (except 4c.), 29 June 1965 (4c.). The 4c. was reported to have received a heavier, thicker overprint than previous printings. This may have been a transitory variation due to over-inking. The 5c. printing used a new border plate 2 (DLR plate number B0839-2).

3. Reqn. G&P/Malaysia/4/87228/2 (December 1964?).

Order for 500 sheets of 5c., 1000 10c., 1000 20c., 500 30c., 250 \$1, 110 \$5. 5c. supplied by the Bureau by insured parcel post on 17 December 1964. Rest supplied by the Bureau by surface on 14 January 1965.

4. Reqn. G&P/Malaysia/5/21910/1 (May 1965?).

Reprint of 7000 sheets of 5c. 6500 sheets shipped on 4 August 1965. The Bureau took 750 sheets.

Notes: Released by Bureau on 17 August 1965. This printing was a "light sepia and deep violet shade" instead of the usual "sepia and violet".

5. Reqn. G&P/Malaysia/5/21910/2 (May 1965?).

Order for 750 sheets of 5c. Supplied by the Bureau by surface insured parcel post on 12 May 1965.

Destruction of plates and dies:

All plates and dies were destroyed on 8 May 1966 with the following exceptions:

1c. border plate 1 Destroyed 3 July 1963.
5c. border plate 1 Destroyed 29 April 1965.
12c. border plate 1 Destroyed 8 March 1964.

The Sabah overprint electros and forme were destroyed on 8 February 1966.

Issue and Withdrawal:

The overprinted stamps were released on 1 July 1964. The author is not aware of any official cover.

The issue was withdrawn on 9 September 1965 (25c. to \$10), 15 November 1965 (1c. to 20c.), and invalidated on 1 December 1971.

CHECK LIST (SABAH overprints)

No.	S.G.	I.S.C.		Mint	Used
61D.2.1	408	372	1c.	<input type="checkbox"/>	<input type="checkbox"/>
61D.2.2	409	373	4c.	<input type="checkbox"/>	<input type="checkbox"/>
61D.2.3	410	374	5c. sepia & violet.	<input type="checkbox"/>	<input type="checkbox"/>
61D.2.3a	410a	374a	- light sepia & deep violet.	<input type="checkbox"/>	<input type="checkbox"/>
61D.2.4	411	375	6c.	<input type="checkbox"/>	<input type="checkbox"/>
61D.2.5	412	376	10c.	<input type="checkbox"/>	<input type="checkbox"/>
61D.2.6	413	377	12c.	<input type="checkbox"/>	<input type="checkbox"/>
61D.2.7	414	378	20c.	<input type="checkbox"/>	<input type="checkbox"/>
61D.2.8	415	379	25c.	<input type="checkbox"/>	<input type="checkbox"/>
61D.2.9	416	380	30c.	<input type="checkbox"/>	<input type="checkbox"/>
61D.2.10	417	381	35c.	<input type="checkbox"/>	<input type="checkbox"/>
61D.2.11	418	382	50c.	<input type="checkbox"/>	<input type="checkbox"/>
61D.2.12	419	383	75c.	<input type="checkbox"/>	<input type="checkbox"/>
61D.2.13	420	384	\$1.	<input type="checkbox"/>	<input type="checkbox"/>
61D.2.14	421	385	\$2.	<input type="checkbox"/>	<input type="checkbox"/>
61D.2.15	422	386	\$5.	<input type="checkbox"/>	<input type="checkbox"/>
61D.2.16	423	387	\$10.	<input type="checkbox"/>	<input type="checkbox"/>
61D.2.16	-	-	First day cover (private).	-	<input type="checkbox"/>

2. NORTH BORNEO / SABAH SPECIAL ISSUES

4 June 1963.

Freedom from Hunger.



The United Nations Food and Agriculture Organisation (FAO) declared 1963 Freedom From Hunger Campaign Year. The Crown Agents issued an omnibus issue comprising a single stamp of a common design by Michael Goaman for each territory, including North Borneo and Sarawak, showing various foods (cow, fish, chicken, maize, rice, fruit) and the FAO emblem. This issue comprises a single counter sheet.

Counter sheets:

Crown Agents Requisition G9/3636/26 called for printing without inspection of 11,800 sheets of a single 28mm x 25mm 12c. stamp. They were printed in sheets of 50 (5 x 10) by Harrison by bi-colour photogravure in two-shades of ultramarine, dark for the text (duty plate) and light for the background (key plate). 11,800 sheets were packed for shipment on 19 May 1963, interleaved with waxed paper and numbered from 1. Unusually, the size of the parcels was not specified. The Bureau took an additional 1600 sheets and 200 sheets went to the FAO. Specimens were produced for GPO (442 + 6), PP (297 + 3 for CO), CA (1), CB (1), BM (1), Goaman (1), HM, H (1).

It was printed in sheets of 50 by photogravure by Harrison & Sons in ultramarine. The printer's sheet had two panes (duty and key respectively) marked 2A 1A and 2B 1B below R10/4. The sheets were numbered above R1/5. Other sheet markings were not recorded. The lightly blue fluorescent paper has watermark Multiple St. Edward's Crown Block CA upright. The comb perforations measure 14.3 x 14.5.

Issue and Withdrawal:

The author is not aware of any official first day cover, although private covers do exist.

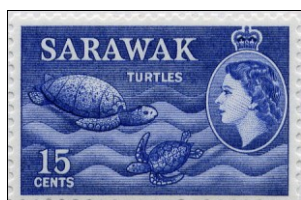
The issue was withdrawn on 2 September 1963.

No.	S.G.	I.S.C.		Mint	Used
63.3.1	407	371	12c.	<input type="checkbox"/>	<input type="checkbox"/>
63.3.2	-	-	First day cover (private).	-	<input type="checkbox"/>

3. SARAWAK DEFINITIVE ISSUES

1 June 1955 and 1 October 1957.

1955 Definitive Issue.





Sarawak was late changing from the stamps of King George VI to those of Queen Elizabeth II. It was not until 1955 that the first design, a 30c. stamp portraying the Queen, appeared and the remainder of this new pictorial definitive issue followed on 1 October 1957. This issue comprises 15 counter sheets, one less than North Borneo (Sarawak did not issue a \$10 stamp).

Unlike Sabah, Sarawak did not require a change of name. It therefore retained the 1955 definitive issue unchanged, although there was a watermark change from the 1964 printing.

Designs:

The 24mm x 28mm (30c.-\$2), 26mm x 39mm (1c-4c.), 39mm x 26mm (rest) designs portray:

Value	Design (Designer).
1c.	Logging - Logs of Ramin wood being manhandled on rails to the Sungei Rajang (M. Thoma).
2c.	Young Orang Utan (M. Thoma).
4c.	Male Kayan dancer holding a parang sword (R. Turrell).
6c.	Malabar Pied Hornbill (<i>Anthracoceros coronatus</i>) (J. D. Hughes).
8c.	Shield and spears (A. Hakim bin Moliti).
10c.	Kenyah ceremonial carving (J. Woodcock).
12c.	Barong panau (sailing prau) (J. D. Hughes).
15c.	Olive Ridley turtles (<i>Eretmochelys imbricata</i>) (J. Browning).
20c.	Melanau girl basket making (G. A. Gundersen, based on a photograph taken by Mrs. Bobbie (Gladys) Bettison of the British Council, Kuching).
25c.	The Astana (Residence of the Governor of Sarawak), Kuching (K. Munich).
30c., 50c.	Queen Elizabeth II with tiara (based in photograph by D. Wilding).
\$1, \$2	Queen Elizabeth II bare-headed (based on painting by P. Annigoni).
\$2	Coat of Arms, as granted 10 March 1947.

The inset Queen's portraits on the 1c. to 25c. values were taken from photographs taken by Dorothy Wilding and show Her Majesty, facing left or right, bare-headed. The original photographs were Dorothy Wilding Ltd. reference O 15924 A (facing left, 1c., 6c., 12c., 15c., 20c.) or O 15924 Z (facing right, 2c., 10c., 25c.). The 30c. and 50c. stamps show the Queen in three-quarter face looking right, wearing a tiara. The portrait was taken from Dorothy Wilding photograph O 15924 I and the border was adapted from the Sarawak 1934 Definitive Issue. The \$1 and \$2 show the Queen in three-quarter face looking left, bare-headed. It is based on the painting by Pietro Annigoni. All the designs incorporate an inset of St. Edward's Crown.

Counter sheets:

They were printed in sheets of 100 (10 x 10) by Bradbury Wilkinson by intaglio (letterpress for coat of arms on \$5). Printing colours were (1c.) green, (2c.) red-orange, (4c.) lake-brown, (6c.) greenish-blue, (8c.) rose-red, (10c.) deep green, (12c.) plum, (15c.) ultramarine, (20c.) olive and green, (25c.) sepia and green, (30c.) red-brown and deep lilac, (50c.) black and carmine, (\$1) myrtle-green and orange-brown, (\$2) violet and bronze-green, (\$5) deep reddish-lilac border with black, red and yellow vignette.

Single-working plates were used for the 1c.-15c. The 20c. and 25c. had separate border duty and vignette plates. The 30c. and 50c. had separate border duty plates but shared a common vignette plate; likewise for the \$1 and \$2. The \$5 used a border duty and three vignette plates, one for each colour. All these plates were initially numbered 1 (in serif italic numerals), appearing as "1" (1c.-15c.), "1 1" (20c.-\$2) or "1 1 1" (\$5), and were stored at Bradbury Wilkinson's works when not in use. New border and vignette plates for the 20c. ("2 2") were registered on 3 February 1959, vignette plate 1 being destroyed on 12 March 1959. The new plates were used for the printing released on 18 March 1959. A new vignette plate (1 2) was used for the 30c. and 50c. reprint released on 16 May 1961, 30c./50c. vignette plate 1 being destroyed on 24 February 1961.

Sheet markings were the printer's imprint "BRADBURY, WILKINSON & CO, L^D, NEW MALDEN, SURREY, ENGLAND." below R10/5-6 and the plate number, which appears below R10/9 (1c.-15c.) or R10/9 (frame) and R10/10 (vignette) (all other values).

The paper gives a very low fluorescent reaction and no after-glow under ultra-violet light. It has watermark Multiple Script CA upright. In order to keep the watermark upright, different size sheets of paper were initially used to print the portrait- and landscape-format versions. Recorded paper sizes are listed under the relevant requisitions. A 24 inches x 17 inches sheet eventually appears to have become standard, but variations continued. Eight values were

reprinted from the existing plates in 1964-1965 on paper with watermark Multiple St. Edward's Crown Block CA upright instead of Multiple Script CA.

The perforations measured 11.2 x 11.6 (1c.-4c.), 12.2 x 13.0 (30c.-\$2), 11.6 x 11.2 (rest). The 1c.-4c. were perforated from the bottom of the sheet by a single comb with two extension holes at left and one at right. The remainder were reported to have been perforated from the bottom of the sheet by a double comb.

Requisition History:

Sheets intended for Sarawak were interleaved with waxed paper and packed into parcels of 500 sheets. Within each parcel, there were five sections of 100 sheets, each sheet being numbered in the series 001 to 100 above stamp R10/1 in serif numerals. All sheets printed before December 1958 were officially recorded as numbered from 1 to 100 but this may be a clerical difference only. Sheets supplied to the Crown Agents Stamp Bureau were not so treated. If, however, the Bureau subsequently supplied material to Sarawak, it had to be packed and sheets numbered as above.

1. Reqn. G9/3425/2 (1955).

Print 7000 sheets of 30c., which was a new value, primarily for airmail. The 30c. design was approved by the Crown Agents Inspector of Stamps on 18 November 1954. Bradbury Wilkinson was paid £68-17-6 for producing original vignette and border dies. A common 2-set transfer roller (No.13630) was used to produce 100-set border and vignette plates, both numbered 1 at a further cost of £84-5-0. 100-set sheet plate set No.1 was issued to the printer on 15 December and returned on 29 January 1955. Specimens were ordered for CA 1, BM 1, CI 1, CO3, HM 4, BW7, PP 46, GPO 383. 6950 sheets were shipped on 17 March. The Bureau took 1000 sheets.

Notes: Script watermark. Initial issue, released by Crown Agents and locally on 1 June 1955.

2. Reqn. G9/4586/3 (1957).⁴

Originally ordered as 10,000 sheets of 1c., 9000 2c., 6500 4c., 11,500 6c., 4500 8c., 14,500 10c., 3500 12c., 10,500 15c., 4500 20c., 4500 25c., 3500 50c., 1600 \$1, 1100 \$2, 550 \$5. Specimens ordered were 383 for the GPO, plus "all other official specimens", 1 sheet, 1 block of four and a single of each value for Rajah Charles Brooke and 12 sets for presentation to the Sarawak Committee.

Revised 14 February 1957 to 11,000 sheets of 1c., 11,000 2c., 7500 4c., 8500 6c., 6500 8c., 12,500 10c., 4500 12c., 9500 15c., 4500 20c., 4500 25c., 4500 50c., 2600 \$1, 2600 \$2, 1300 \$5.

The 1c.-12c. and 20c. designs were approved by the Crown Agents Inspector of Stamps on 30 November 1956, but the 15c., 25c., \$2 were not approved on the same date. These three values were resubmitted and approved on 1 January 1957, together with the 50c. and \$5. An alternative 50c. in brown with a blue head was rejected. Original single-working dies were produced for values up to 15c., together with border dies for 20c., 25c., 50c. and \$5. A common border die without duty was produced for the \$1 and \$2 and transfer roller 13935 used to produce dies for each value. Vignette dies were produced for the 20c. and 25c. and a common one for the \$1 and \$2. The 50c. used the existing 30c. die. Transfer rollers 13980 (1c. + 4c. + 20c. vignette), 13982 (2c. + 6c. + 10c.), 13983 (8c. + 12c. + 20c. border), 14013 (50c. border), 14015 (\$1 border + \$2 border + common vignette), 14016 (15c. + \$5 border) and 14018 (25c. border + vignette) were then used to produce the 100-set printing plates (all numbered "1").

Paper released to printer 1 March 1957 (17½in x 24in), 6 March (24in x 17¼in), 19 March (21½in x 24½in). Plates released to printer: 31 January (6c. SW1), 22 February (8c., 10c., 12c., 15c., SW1, 20c. V1), 19 March (1c., 2c., 4c. SW1, 25c., 50c. B1, 25c. V1), 11 April (20c., \$1, \$2, \$5 B1, \$1, \$2 V1), 17 April (50c. V1), 8 May (\$5 V1).

The stamps were shipped as follows:

Value	Shipped	Sheets to Sarawak	Sheets to Bureau
1c.:	27 May 1957	5330	6000
2c.:	24 June 1957.	5300	6000
4c.:	27 May, 24 June 1957	5100	2500
6c.:	17 April 1957	6200	2500
8c.:	27 May 1957	4300	6000
10c.:	17 April, 10 May 1957	10,175	2500
12c.:	17 April 1957	2100	2500
15c.:	1, 10 May 1957	8300	1500
20c.:	24 June 1957	3000	1500
25c.:	10, 27 May 1957	3150	1500
50c.:	24, 28 June 1957	2950	1500
\$1:	28 June 1957	1850	600
\$2:	28 June 1957	2000	600
\$5:	28 June 1957	570	300

Notes: Script watermark. Initial issue of all values except 30c. Released by CA and locally on 1 October 1957.

3. Reqn. G9/5245/1 (1957).

NOTE: Although ordered after the previous Requisition, the stamps supplied were, with the exception of the 30c., the King George VI designs to provide a bridging stock while the new stamps were being designed and printed. (King George VI items are shown below in *italics*).

Reprint: 3000 sheets of 1c., 1500 2c., 3000 4c., 6000 6c., 6000 10c., 6000 15c., 1000 20c., 2000 25c., **1000 30c.**, 1000 \$1, 500 \$2. Plates released to printer: 10 December 1956 (1c., 10c., 15c. SW1), 8 January 1957 (20c., \$1, \$2 B1), 14 January (6c. SW1), 15 January (2c. SW1, 20c. V1, 25c. B1, \$1, \$2 V1), 16 January (25c. V1), **21 January (4c. SW1, 30c. B1/V1)**. The stamps were shipped as follows:

Value	Shipped	Sheets to Sarawak	Sheets to Bureau	Exchanged by Bureau
1c.	15 February 1957, 9 April 1957	3000	-	3343.28 (limited to 2700)
2c.	28 February 1957, 9 April 1957	1000	500	432.48
4c.	9 April 1957	3050	-	804.08
6c.	15 February 1957, 9 April 1957	6320	-	702.38
10c.	15 February 1957, 9 April 1957	6000	-	778.23
15c.	9 April 1957	6000	-	774.68
20c.	9 April 1957	1000	-	623.58
25c.	9 April 1957	2000	-	294.68
30c.	9 April 1957	1000	-	665.78
\$1	9 April 1957	1000	-	467.58
\$2	9 April 1957	500	-	419.64

Notes: Script watermark. The 30c. reprint was released by Crown Agents Stamp Bureau on 10 April 1957.

4. Reqn. G9/6672/1 (1957).

Supply from Bureau 1000 sheets of 12c. 500 sheets shipped by air freight on 24 January 1958. 500 followed by insured parcel post on 29 January.

Reprint 25,000 sheets of 12c., 7000 25c., 7000 50c.

Paper released to printer - dates not recorded (17½in x 24in, 21½in x 24½in, 21½in x 24½in). Plates released to printer: 15 January 1958 (12c. SW1), 21 January (25c. V1), 23 January (50c. B1/V1), 27 January (25c. B1).

The stamps were shipped (sheets numbered 1 - 100) as follows:

Value	Shipped	Sheets to Sarawak	Sheets to Bureau	Exchanged by Bureau
12c.:	4 March, 3 April 1958	25,150	1000	240,140 stamps.
25c.:	17 March, 3 April 1958	7265	-	140,140 stamps
50c.:	3 April 1958	6850	-	141,740 stamps

Notes: Script watermark. Released by Bureau on 29 April 1958 together with the following Requisition.

5. Reqn. G9/6850/1 (1957).

Reprint 1000 sheets of 8c., 4000 12c., 2000 20c., 1000 30c., 2000 \$1, 2000 \$2, 1000 (changed to 1430 7 January 1958) \$5.

Paper released to printer 2 December 1957 (17½in x 24in), 5 December (21½in x 24½in). Plates released to printer: 28 November 1957 (\$5 B1), 2 December (\$5 V1), 15 January 1958 (12c. SW1), 23 January (8c. SW1, 20c., 30c. V1), 27 January (20c. B1), 29 January (30c. B1, \$1, \$2 B1/V1).

The stamps were shipped (sheets numbered 1 - 100) as follows:

Values	Shipped	Sheets to Sarawak	Exchanged by Bureau
8c.:	3 April 1958	1050	900 sheets
12c.:	4 March 1958	4000	218,823 stamps
20c.:	17 March, 3 April 1958	7265	140,140 stamps
30c.:	3 April 1958	1981	120,303 stamps
\$1:	3 April 1958	2100	45,422 stamps
\$2:	3 April 1958	2025	47,112 stamps
\$5:	3 April 1958	1445	18,058 stamps

The Bureau requested to exchange 212,883 8c. stamps but was limited to 900 sheets.

Notes: Script watermark. Released by Bureau on 29 April 1958 together with the previous Requisition.

6. Reqn. G9/7932/1 (1958).

Reprint without inspection 11,000 (increased 29 July 1958 to 15,000 following an increase to the Bureau's order) sheets of 1c., 10,000 2c., 15,000 4c., 7000 6c., 5000 8c., 15,000 10c., 10,000 12c., 15,000 15c., 2000 20c., 2000 25c., 7000 30c., 7000 50c., 1000 \$5.

Paper released to printer on 6 August 1958 (17½in x 24in), 7 August (24in x 17in). Plates released to printer: Date not recorded.

The stamps were shipped (sheets numbered 001-100) as follows:

Value	Shipped	Sheets to Sarawak	Sheets to Bureau	Exchanged by Bureau
1c.:	9 December 1958	10,909	5000	106,033 stamps
2c.:	9 December 1958, 29 January 1959	10,392	-	465,783 stamps
4c.:	9 December 1958, 29 January 1959	15,745	-	145,303 stamps
6c.:	9 December 1958, 7 January 1959	7267	-	199,143 stamps
8c.:	19 December 1958, 29 January 1959	5271		205,913 stamps
10c.:	19 December 1958, 29 January 1959	15,088	500	207,183 stamps
12c.:	7 January 1959, 19 January 1959	10,730	-	212,533 stamps
15c.:	19 December 1958, 29 January 1959	15,781	-	111,373 stamps
20c.:	29 January 1959, 10 March 1959	2038	-	115,293 stamps
25c.:	7 January 1959	2000	-	115,473 stamps
30c.:	7 January 1959, 10 March 1959	6829	-	62,788 stamps
50c.:	7 January 1959, 10 March 1959	7046	-	118,032 stamps
\$5:	27 January 1959, 10 March 1959	850	-	15,720 stamps

The Bureau originally ordered 1000 sheets but later amended the order to 5000 sheets. It took 500 sheets of 10c. to replace stocks depleted by Reqn. G9/7932/3. An advance of 100 sheets of \$5 from Bureau stock was sent 8 January 1959.

Notes: Script watermark. Released by Bureau on 18 March 1959. The 4c. was a new brown-purple shade, instead of lake-brown. The 10c. was from new Plate 2 2. A reported \$1 value is not supported by the Requisition.

7. Reqn. G9/7932/2 (29 September 1958).

1000 2c., 500 4c., 500 5c. ordered on 29 September 1958.

1000 2c., 500 4c., 500 5c. shipped from the Bureau on 14 October 1958.

8. Reqn. G9/7932/3 (1958).

159 sheets of 1c., 1000 2c., 1000 6c., 1500 10c. ordered 29 September 1958.

159 sheets of 1c., 1000 2c., 1000 6c., 1500 10c. shipped from the Bureau on 30 October 1958, numbered 001-100.

The Bureau ordered 500 extra sheets of 10c. under Reqn. 7932/1 to replace depleted stocks.

9. Reqn. G9/115/1 (1959).

Reprint without inspection 5000 sheets of 6c., 3500 8c., 25,000 10c., 10,000 15c., 19,200 20c., 1000 \$1.

Paper released to printer 19 November 1959 (17½in x 24in), 24 November (22¾in x 16¼in for \$1 only). Plates released to printer: Date not recorded.

The stamps were shipped (numbered 001-100) as follows:

Value	Shipped	Sheets to Sarawak	Sheets to Bureau	Sheets exchanged by Bureau
6c.:	8 January, 4 February 1960	5149	-	920
8c.:	8 January, 4 February 1960	3721	-	530
10c.:	8 January, 4 February 1960	26,703	-	1048
15c.:	8 January, 4 February 1960	10,722	-	598
20c.:	29 October 1959, 8 January 1960	20,178	200	130
\$1:	4 February 1960	1078	-	418

In addition, 1500 sheets of 8c. shipped to Sarawak from the Bureau 4 February 1960.

Notes: Script watermark. Released by Bureau on 17 February 1960.

10. Reqn. G9/115/2 (1959).

1000 sheets of 20c. shipped to Sarawak from the Bureau by surface on 29 September 1959, numbered 001-100.

11. Reqn. G9/2053/1 (1961).

1000 sheets of 12c., 500 25c. and 500 50c. shipped to Sarawak from the Bureau by surface mail on 30 January 1961.

12. Reqn. G9/2053/2 (1960).

Reprint without inspection: 7500 (later 12,500) sheets of 1c., 10,000 2c., 5000 4c., 10,000 6c., 5000 8c., 20,000 10c., 4000 12c., 5000 15c., 5000 20c., 7500 25c., 8000 30c., 2500 50c., 8000 (later 4000) \$1, 5000 (later 2000) \$2, 5000 (later 2000) \$5. The amendments to the orders took place on 18 and 30 November 1960.

Paper released to printer - date not recorded (24in x 17in). Plates released to printer: Not recorded.

The stamps were shipped (numbered 001-100) as follows:

Value	Shipped	Sheets to Sarawak	Sheets to Bureau	Sheets exchanged by Bureau
1c.:	18 January, 15 March 1961	5000	2500	80
2c.:	18 January, 15 March 1961	10,000	-	1770

Value	Shipped	Sheets to Sarawak	Sheets to Bureau	Sheets exchanged by Bureau
4c.:	18 January, 15 March 1961	5000	-	500
6c.:	26 January, 15 March 1961	10,000	-	930
8c.:	30 January, 15 March 1961	5000	-	510
10c.:	26 January, 15 March 1961	20,000	-	1030
12c.:	28 February, 15 March 1961	4000	-	109
15c.:	28 February, 15 March 1961	5000	-	590
20c.:	3, 15 March 1961	5000	-	320
25c.:	30 January, 15 March 1961	7500	-	630
30c.:	3, 15 March 1961	8000	-	600
50c.:	3, 15 March 1961	2500	-	660
\$1:	15 March 1961	4000	-	410
\$2:	15 March 1961	2000	-	430
\$5:	3, 15 March 1961	2000	-	50

Notes: Script watermark. Released by Bureau on 16 May 1961. The 4c. was lake-brown. The 30c. was new vignette plate 2 (1 2). The 50c. was also new vignette plate 2 (1 2)

13. Reqn. G9/4694/1 (1961).

Reprint without inspection 9000 sheets of 1c., 1500 20c., 5000 \$1.

Paper released to printer - date not recorded (24in x 17in). Plates released to printer: Not recorded. The 20c. was plate number 2 2, the 1c. 1 and the \$1 1 1.

The stamps were shipped (numbered 001-100) in two batches on 29 December 1961 and 8 February 1962 as follows:

Value	Sheets to Sarawak	Sheets to Bureau	Sheets exchanged by Bureau
1c.:	4534	4000	1640
20c.:	1488	-	310
\$1:	4946	-	410

Notes: Script watermark. Released by Bureau on 19 January 1962. \$1 release was not recorded.

14. Reqn. G9/8763/1 (1963?).

Reprint 10,400 sheets of 10c. and 7000 sheets of 12c.

Paper released to printer - date not recorded (19 in x 13³/₈ in). Shipment as ordered was as follows:

10c.: 12 July 1963. The Bureau exchanged 101,000 stamps.

12c.: 12 July 1963. The Bureau exchanged 108,000 stamps.

Notes: Script watermark. Released by Bureau on 20 August 1963.

15. New watermark.

Unlike Sabah, Sarawak did not require a change of name. It therefore retained the 1955 definitive issue unchanged. However, eight values were reprinted from the existing plates in 1964-1965 on paper with watermark Multiple St. Edward's Crown Block CA instead of Multiple Script CA. Only two values (1c. and 20c.) were reprinted more than once on this paper.

16. Reqn. G&P/Malaya/4/11859/1 (1964).

Reprint 5300 sheets of 20c. Paper released to printer - date not recorded (5300 sheets 18in x 26in).

5087 sheets shipped on 29 May 1964. The Bureau took 300 sheets and exchanged 30,000 stamps.

Notes: Block watermark. Released by Bureau on 9 June 1964.

17. Reqn. G&P/Malaya/4/20000/1 (April 1964?)

Reprint 6500 sheets of 1c., 5000 sheets of 6c., 20,000 sheets of 10c., 10,000 sheets of 12c., 10,000 sheets of 20c. and 5000 sheets of 25c. Paper released to printer - date not recorded (24in x 17in and 18in x 26in).

Shipment was on 12 August 1964 as follows:

Value	Sheets to Sarawak	Sheets exchanged by Bureau
1c.:	4718	1500
6c.:	5000	1500
10c.:	20,500	990
12c.:	10,491	1060
20c.:	10,214	Not recorded (see below)
25c.:	4830	600

The Bureau exchanged an undefined quantity of 20c. which was to be advised later (but was not recorded).

Notes: Block watermark. Released by Bureau on 8 September 1964. The 25c. is a distinctive shade (deep sepia and bluish green, as opposed to sepia and green).

18. Reqn. G&P/Malaya/4/20000/2 (April 1964?)

Order for 300 sheets of \$2. Shipped by the Bureau on 9 April 1964 by surface.

Notes: Script watermark.

19. Reqn. G&P/Malaya/5/18845/1 (April 1965?)

Reprint of 3000 sheets of 1c., 1150 sheets of 2c. and 10,000 sheets of 15c.

Paper released to printer - date not recorded (24in x 17in). Shipment was as follows:

Value	Shipped	Sheets to Sarawak	Sheets to Bureau
1c.:	air freight 6 July 1965, 22 July 1965	1845	1000
2c.:	22 July 1965	665	500
15c.:	22 July 1965	9692	500

Notes: Block watermark. Released by Bureau on 17 August 1965. Although the 2c. was officially released on 17 August 1965, it was reported that the main post office in Kuching had large stocks of the script 2c. (its principal use is said to have been as a substitute for coins in small change!) and it was not actually put on sale there until 11 October 1965.⁵

20. Reqn. G&P/Malaya/5/18845/2 (April 1965?)

Order for 350 sheets of 2c. and 500 sheets of 15c. Shipped by the Bureau by insured parcel post on 28 April 1965 by surface.

Notes: Probably Block watermark from Reqn. G&P/Malaya/5/18845/1, but some old Script stock may have been included.

Issue and Withdrawal:

The 30c. appeared on 1 June 1955 and the rest on 1 October 1957. There was no official first day cover or postmark. There was no first day facility for the watermark changes.

The issue was withdrawn on 8 September (25c.-\$5) or 12 November 1965 (1c.-20c.) and invalidated on 1 October 1971.

Destruction of plates and dies;

The surviving plates, dies, etc., were stored at Bradbury Wilkinson when not in use and were certified destroyed on 5 February 1969.

No.	S.G.	I.S.C.		Mint	Used
55D.1.1	188	200	1c. Script wmk.	<input type="checkbox"/>	<input type="checkbox"/>
55D.1.1a	204	216	- Block wmk.	<input type="checkbox"/>	<input type="checkbox"/>
55D.1.2	189	201	2c. Script wmk.	<input type="checkbox"/>	<input type="checkbox"/>
55D.1.2a	205	217	- Block wmk.	<input type="checkbox"/>	<input type="checkbox"/>
55D.1.3	190	202	4c. lake-brown Script wmk.	<input type="checkbox"/>	<input type="checkbox"/>
55D.1.3a	190a	202a	- Brown-purple Script wmk.	<input type="checkbox"/>	<input type="checkbox"/>
55D.1.4	191	203	6c. Script wmk.	<input type="checkbox"/>	<input type="checkbox"/>
55D.1.4a	206	218	- Block wmk.	<input type="checkbox"/>	<input type="checkbox"/>
55D.1.5	192	204	8c.	<input type="checkbox"/>	<input type="checkbox"/>
55D.1.6	193	205	10c. Script wmk.	<input type="checkbox"/>	<input type="checkbox"/>
55D.1.6a	207	219	- Block wmk.	<input type="checkbox"/>	<input type="checkbox"/>
55D.1.7	194	206	12c. Script wmk.	<input type="checkbox"/>	<input type="checkbox"/>
55D.1.7a	208	220	- Block wmk.	<input type="checkbox"/>	<input type="checkbox"/>
55D.1.8	195	207	15c. Script wmk.	<input type="checkbox"/>	<input type="checkbox"/>
55D.1.8a	209	221	- Block wmk.	<input type="checkbox"/>	<input type="checkbox"/>
55D.1.9	196	208	20c. Script wmk.	<input type="checkbox"/>	<input type="checkbox"/>
55D.1.9a	210	222	- Block wmk.	<input type="checkbox"/>	<input type="checkbox"/>
55D.1.10	197	209	25c. Sepia and green. Script wmk.	<input type="checkbox"/>	<input type="checkbox"/>
55D.1.10a	211	223	- Deep Sepia and bluish green. Block wmk.	<input type="checkbox"/>	<input type="checkbox"/>
55D.1.11	198	210	30c.	<input type="checkbox"/>	<input type="checkbox"/>
55D.1.12	199	211	50c.	<input type="checkbox"/>	<input type="checkbox"/>
55D.1.13	200	212	\$1.	<input type="checkbox"/>	<input type="checkbox"/>
55D.1.14	201	213	\$2.	<input type="checkbox"/>	<input type="checkbox"/>
55D.1.15	202	214	\$5.	<input type="checkbox"/>	<input type="checkbox"/>
55D.1.16	-	-	First day cover (private) (11).	-	<input type="checkbox"/>
55D.1.17	-	-	- (1-10/12-15).	-	<input type="checkbox"/>

4. SARAWAK SPECIAL ISSUES

4 June 1963.

Freedom from Hunger.



The United Nations Food and Agriculture Organisation (FAO) declared 1963 Freedom From Hunger Campaign Year. The Crown Agents issued an omnibus issue comprising a single stamp of a common design by Michael Goaman for each territory, including North Borneo and Sarawak, showing various foods (cow, fish, chicken, maize, rice, fruit) and the FAO emblem. This issue comprises a single counter sheet.

Counter sheets:

Crown Agents Requisition G9/3636/31 called for printing, without inspection, of 7800 sheets of a single 12c. stamp. That number of sheets were packed for shipment on 19 May 1963 in parcels of 500 sheets divided into sections of 100, numbered from 001 to 100 in each section and interleaved with waxed paper. Unusually, the size of the parcels was not specified. The Bureau took an additional 1600 sheets and 200 sheets went to the FAO. 442 specimens were produced, together with one 50-set sheet, 1 block of four and a single stamp for Rajah Brooke.

It was printed in sheets of 50 by photogravure by Harrison & Sons in sepia, the original intention of having all the omnibus issue printed in ultramarine having been abandoned at a late stage. The printer's sheet had two panes marked 2A 1A and 2B 1B. Other sheet markings were not recorded. The date on which the 13in x 19in sheets of "W&E Crown Gummed No.3 sideways block watermark." paper was released to the printer is not recorded. The lightly blue fluorescent paper has watermark Multiple St. Edward's Crown Block CA upright. The comb perforations measure 14.3 x 14.5.

Issue and Withdrawal:

The author is not aware of any official first day cover, although private covers do exist.

The issue was withdrawn on 2 September 1963. It was invalidated on 1 April 1969.

No.	S.G.	I.S.C.		Mint	Used
63.4.1	203	215	12c.	<input type="checkbox"/>	<input type="checkbox"/>
63.4.2	-	-	First day cover (private).	-	<input type="checkbox"/>

NOTES

- ¹ In the first edition, I referred to cylinders. The Plate and Die Register refers to plates and normally is quite specific when referring to cylinders. However, this is inconclusive.
- ² The De La Rue replacement plate is referred to in the Plate and Die Register as "47938-1".
- ³ Crown Agents Plate and Die Register.
- ⁴ Requisition Book 9, p.157.
- ⁵ Reported by Mr P. H. H. Howes in Sarawak Journal 20/142.