

CHAPTER THIRTY-FIVE

SPECIAL ISSUES 1985-1989.

Note: All illustrations in this Chapter are reduced by 10% unless otherwise stated.

1 March 1985.

3rd Books, Brush Paintings, Stamps & News Media Exhibition.

From 1 to 17 March, the Malaysian Chinese Cultural Association held an exhibition, for which a purple cachet "PAMIRAN SETEM KETIGA / 1st-17th March 1985 / [flower picture] / KUALA LUMPUR . MALAYSIA" was used. Privately-produced souvenir postcards exist bearing the cachet on a Chinese stamp (8s. or 70s.), together with cds "KUALA LUMPUR / - / -1MAC85 / K14" on a 5s. Federal Territory stamp.

9 March 1985.

ASEANPEX'85.

See 1979 Definitive Issue Postal Stationery in Chapter 15.

In addition, Philatelic Society of Malaysia issued two commemorative postcards at 30c. each mint, 50c. serviced at the event's temporary post office. PSM Stamp Postcard No.7 showed the Aseanpex emblem and stamps of the participating countries (Malaysia, Brunei, Philippines, Singapore, Indonesia and Thailand), while No.8 showed the Sultan Ahmad Building, Aseanpex emblem and stamps of Malaysia, FMS, MPU and Bangkok (B overprint on Straits Settlements).

30 March 1985.

Silver Jubilee of Parliament.



This issue marked the Silver Jubilee of the Federal Parliament.

Designed by Peter Khang Howe Ket, this issue comprised two counter sheets.

Counter sheets:

The two designs showed the Parliament building. The 20c. was 28mm x 32mm, showing the building in the form of a gold and blue medallion. The 32mm x 28mm \$1 showed the building at dawn or dusk.

They were printed in sheets of 100 by Security Printers (Malaysia) using off-set lithography. Sheet markings were not recorded. The low-fluorescence paper with matt gum was unwatermarked. The comb perforations measured 13.6 x 13.9 (20c.) or 13.9 x 13.6 (\$1). The bottom (20c.) and left (\$1) margins were perforated through; other margins were not recorded.

First day facilities:

The first day cover, sold at 20c., featured the Parliament Building. The "rounded triangular" special first day postmark included the same building.

Official presentation first day covers and folders are likely to have existed as for the issue of 22 January 1983, but have not yet been reported.

Withdrawal:

The issue was due to be withdrawn on 30 June 1985.

No.	S.G.	I.S.C.		Mint	Used
85.1.1	308	299	20c.	<input type="checkbox"/>	<input type="checkbox"/>
85.1.2	309	300	\$1.	<input type="checkbox"/>	<input type="checkbox"/>
85.1.3	-	MFDC-116	First day cover (1-2).	<input type="checkbox"/>	<input type="checkbox"/>

25 April 1985.

Protected Wildlife (I) - Animals (I)



This was the first of a series of issues dealing with protected or endangered wildlife.

Designed by Peter Khang Howe Ket, this issue comprised three counter sheets.

Counter sheets:

The three designs showed:

Value	English name	Malay name (on stamp)	Latin name (on stamp)
10c.	Banded Linsang	Linsang	<i>Prionodon linsang</i>
40c	Slow Loris	Kongkang	<i>Nycticebus coucang</i>
\$1	Spotted Giant Flying Squirrel	Tupai Terbang Bintang	<i>Petaurista elegans</i>

The 10c. was 39mm x 26mm, whilst the others were 26mm x 39mm. This issue was printed in sheets of 100 by Waddington by off-set lithography. Sheet markings were not recorded. The non-fluorescent-coated paper was unwatermarked. The comb perforations measured 14.1 x 14.2 (10c.) or 14.2 x 14.1 (rest).

Proofs:

Imperforate proofs of all values appeared on the open market in 2008.

First day facilities:

The first day cover, sold at 20c., featured the three animals.

The special first day postmark included the Banded Linsang.

Official presentation first day covers and folders are likely to have existed as for the issue of 22 January 1983, but have not yet been reported.

Withdrawal:

The issue was due to be withdrawn on 25 July 1985.

No.	S.G.	I.S.C.		Mint	Used
85.2.1	310	301	10c.	<input type="checkbox"/>	<input type="checkbox"/>
85.2.2	311	302	40c.	<input type="checkbox"/>	<input type="checkbox"/>
85.2.3	312	303	\$1.	<input type="checkbox"/>	<input type="checkbox"/>
85.2.4	-	MFDC-117	First day cover (1-3).	<input type="checkbox"/>	<input type="checkbox"/>

15 May 1985.

International Year of Youth.



On 17 December 1979, the United Nations General Assembly declared 1985 to be the International Year of Youth, intended to promote the involvement of young people in development and the dissemination among youth of the principles of peace, respect for human rights and freedom.

Designed by Amir bin Osman, this issue comprised two counter sheets.

Counter sheets:

The two 38mm x 28mm designs showed:

20c.: "Youth Solidarity" (stylised figures with hands in their pockets) and the Malaysian and UN IYY emblems;

\$1: "Youth Participation in National Development" (young workers) and the IYY emblems.

They were printed in sheets of 100 by Security Printers (Malaysia) using off-set lithography. Sheet markings were not recorded. The low fluorescence paper was unwatermarked and had matt gum. The comb perforations measured 13.2 x 12.9.

First day facilities:

The first day cover, sold at 20c., featured the Malaysian IYY emblem (youths standing in front of the Malaysian Youth organisation emblem and a globe).

The special first day postmark included the same emblem.

Official presentation first day covers and folders, presented to VIPs on behalf of the Minister for Electricity, Telecommunications & Post, exist as for the issue of 22 January 1983, but in this case the FDC was not overprinted. ¹

Withdrawal:

The issue was due to be withdrawn on 15 November 1985.

No.	S.G.	I.S.C.		Mint	Used
85.3.1	313	304	20c.	<input type="checkbox"/>	<input type="checkbox"/>
85.3.2	314	305	\$1.	<input type="checkbox"/>	<input type="checkbox"/>
85.3.3	-	MFDC-118	First day cover (1-2).	<input type="checkbox"/>	<input type="checkbox"/>

1 June 1985.

Malayan Railway Centenary.



The Larut Railway from Taiping to Port Weld (now Kuala Sepatang) opened without ceremony on 1 June 1885. This line formed the nucleus of the Perak Government Railway network. This merged with the Selangor Government Railway to form the Federated Malay States Railway on 1 July 1901. The FMSR became the Malayan Railway (Keretapi Tanah Melayu) in 1948. The actual Malayan railway centenary could have been celebrated in 1969, but the Johore Wooden Railway of 1869 was a failure and did not become part of the national network.

Designed by AMW Communications Management Sdn. Bhd., who also produced other event publicity for KTM, this issue comprised three counter sheets and a miniature sheet.

Counter sheets:

The three 38mm x 28mm sheet stamp designs showed respectively:

15c: Larut Railway (Perak Government Railway) No. 1. An 0-6-0T steam locomotive, built in 1885 by Ransome & Rapier of Ipswich, England. Later Federated Malay States Railway No. 1. It was withdrawn in 1916 and scrapped circa 1920.

20c: Class 20 1500hp Co-Co diesel-electric locomotive of 1957 in its later maroon and cream livery (the original green livery appeared on the 1966 Malaysia Plan issue (66.5)). Class 20 was built by English Electric of Preston, England. The 26 locomotives were withdrawn in the 1990s.

\$1: Class 23 2100hp Co-Co diesel-hydraulic locomotive of 1983, built by Hitachi, Japan, was shown in the silver livery of the 1980s. Withdrawal of the 15 locomotives began in the late 1990s.

The stamps were printed in sheets of 100 (10 x 10) by Security Printers (Malaysia) using off-set lithography. The 15c. used three colours (black, red, yellow); the 20c. additionally used dull scarlet; the \$1 also used four colours (black, red, yellow, dark blue). Sheet markings included pane numbers (1A) above and below the first and last column, SPM emblems to the left and right of top and bottom rows. The non-fluorescent-coated paper was unwatermarked. The comb perforations measured 13.2 x 12.9. The bottom margin of the \$1 was imperforate; the 15c. top and left, 20c. top and right and \$1 left were perforated through; the other margins were not recorded.

Miniature sheet:

The 119mm x 60mm sheet showed Kuala Lumpur station with Class 56 4-6-2 Pacific steam locomotive "564.18 SELETAR" leaving with the Day Mail train for Singapore. This locomotive was built by North British Locomotive Company in 1946 as FMSR Class O⁴. (The stamp was incorrectly inscribed 1938, which was the build date of the similar Class O¹). A rectangle of perforation around the locomotive created a 49mm x 33mm 80c. stamp. This miniature sheet won the Best Malaysian Stamp of 1985 Award.



The sheets were printed by SPM using off-set lithography. Paper was as for the counter sheets. The comb perforations measured 13.7 x 13.3.

First day facilities:

The first day cover, sold at 20s., featured Kuala Lumpur railway station.

The special first day postmark used at the various Philatelic Bureaux included FMSR No.1. KHP postmarks were used at other offices. One cover with both stamps and miniature sheet is known cancelled to order at Taiping, Kuala Sepatang, Kuala Lumpur Station and Kuala Lumpur Philatelic Bureau. ²

Official presentation first day covers and folders are likely to have existed as for the issue of 22 January 1983, but have not yet been reported.

Maxicards using the 15c. stamp and a Muzium Negara postcard of the same locomotive were privately produced. ³

Etiquette:

During the celebration period, KTM affixed to official correspondence a 38mm x 24mm, mainly silver, etiquette, incorporating the centenary emblem, FMSR No.1 and a coach.



Withdrawal:

The issue was due to be withdrawn on 1 September 1985.

No.	S.G.	I.S.C.		Mint	Used
85.4.1	315	306	15c.	<input type="checkbox"/>	<input type="checkbox"/>
85.4.2	316	307	20c.	<input type="checkbox"/>	<input type="checkbox"/>
85.4.3	317	308	\$1.	<input type="checkbox"/>	<input type="checkbox"/>
85.4.4	MS318	MC-119M	80c. Miniature Sheet.	<input type="checkbox"/>	<input type="checkbox"/>
85.4.5	-	MFDC-119	First day cover (1-3).	<input type="checkbox"/>	<input type="checkbox"/>
85.4.5a	-	MFDC-119M	- (4).		<input type="checkbox"/>

9 July 1985.

Malaysian-Made Vehicles (I) - Proton Saga - National Car.



This issue marked the launch of the Proton Saga car, the first car produced solely in Malaysia, built at Shah Alam. Perusahaan Otomobil Nasional Bhd (Proton), incorporated on 7 May 1983, the makers of Proton cars, and Edaran Otomobil Nasional Sdn. Bhd. (EON), the dealers for Proton cars, were originally joint ventures of the Malaysian Government's Heavy Industries Corporation of Malaysia (HICOM) and Mitsubishi Motors Corporation of Japan, but the latter later reduced its support to a token 15% shareholding.

Designed by Waddington staff, this issue comprised three counter sheets.

Counter sheets:

The three 39mm x 26mm stamps showed different saloon versions of the car. The 20c. and 40c. showed 1.3S models and the \$1 showed a 1.5S. 1.3 and 1.5 were the total nominal swept volumes of the four-cylinder engines in litres.

This issue was printed in sheets of 100 by off-set lithography by Waddington. Sheet markings were not recorded. The non-fluorescent-coated paper was unwatermarked. The comb perforations measured 14.1 x 14.2.

First day facilities:

The first day cover, sold at 20c., featured a side view of a Saga car.

The special first day postmark included the 20c. car drawing.

Official presentation first day covers and folders are likely to have existed as for the issue of 22 January 1983, but have not yet been reported.

Withdrawal:

The issue was due to be withdrawn on 9 October 1985.

No.	S.G.	I.S.C.		Mint	Used
85.5.1	319	310	20c.	<input type="checkbox"/>	<input type="checkbox"/>
85.5.2	320	311	40c.	<input type="checkbox"/>	<input type="checkbox"/>
85.5.3	321	312	\$1.	<input type="checkbox"/>	<input type="checkbox"/>
85.5.4	-	MFDC-120	First day cover (1-3).	<input type="checkbox"/>	<input type="checkbox"/>

27 July - 4 August 1985.

Penang - Penpex '85 Stamp Exhibition.

The Penang Philatelic Society (Persatuan Setem Pulau Pinang) held the Penang Philatelic Exhibition 1985 at the Penang Museum. PSPP issued a souvenir cover and Pos Malaysia supplied a special cachet and temporary post office.

5 September 1985.

Selangor - Silver Jubilee of the Sultan.



Sultan Salahuddin celebrated his Silver Jubilee of accession to the throne of Selangor on 2 September 1985, the stamps appearing three days later.

Designed by Peter Khang Howe Ket, this issue comprised three counter sheets.

Counter sheets:

The three 38mm x 28mm stamps (15c., 20c., \$1) to a common design showed the coat of arms of Selangor and a full-face half-length portrait of the Sultan. The stamps were printed in sheets of 100 by Security Printers (Malaysia) using off-set lithography. Sheet markings were not recorded. The non-fluorescent-coated paper does not contain any consistently visible watermark. ⁴ The comb perforations measured 13.2 x 12.9.

First day facilities:

The first day cover, printed by Rota Envelopes and sold at 20s., featured the royal headdress of Selangor.

The special Bureau first day postmark included "25".

Official presentation first day covers and folders are likely to have existed as for the issue of 22 January 1983, but have not yet been reported.

From this issue, Selangor Pewter ⁵ privately modified official first day covers to carry pewter medals. As unofficial commercial productions, these are not listed in this handbook.

Withdrawal:

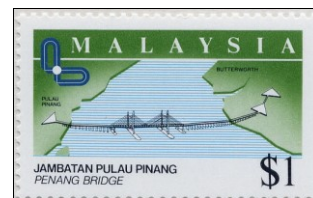
The issue was on sale for one day only throughout Malaysia, but remained on sale in Selangor and philatelic bureaux. It was due to be withdrawn from Selangor on 5 December 1985.

Remaindered covers are known handstamped in violet with "URUSAN POS" for official correspondence from Kapit, Sarawak between 15 May and 6 July 1988.

No.	S.G.	I.S.C.		Mint	Used
85.6.1	173	175	15c.	<input type="checkbox"/>	<input type="checkbox"/>
85.6.2	174	176	20c.	<input type="checkbox"/>	<input type="checkbox"/>
85.6.3	175	177	\$1.	<input type="checkbox"/>	<input type="checkbox"/>
85.6.4	-	MFDC-SE17	First day cover (1-3).	<input type="checkbox"/>	<input type="checkbox"/>
85.6.5	-	-	- Handstamped for use on official correspondence.	-	<input type="checkbox"/>

14 September 1985.

Penang Bridge.



The road bridge linking Batu Uban on the island of Penang with the mainland at Perai, Province Wellesley opened on 14 September 1985. Planning started in 1960 but work did not begin until after 1981. The bridge was a two-span, cable-stayed, concrete girder design. It was, at the time of opening, with its approach piers, the longest bridge in Asia at 13.5km, of which 8.4km was over water, and the third longest in the world.

Designed by Kathy Wong, this issue comprised three counter sheets.

Counter sheets:

The three stamps showed:

20c.: A sea-level view of the main span of the bridge;

40c.: A similar view with a map showing the position of the bridge;

\$1: A drawing of the bridge linking the island and the mainland.

The \$1 was larger than the other two (45mm x 28mm against 38mm x 28mm).

They were printed in sheets of 100 by Security Printers (Malaysia) using off-set lithography. Sheet markings were not recorded. The non-fluorescent-coated paper was unwatermarked. The comb perforations measured 13.2 x 12.9 (20c., 40c.) or 12.2 (\$1).

Variety:

The following variety is known:

Value	No.	Variety
20c.	v1	Double row of perforations at the top.

First day facilities:

The first day cover, sold at 20s., featured an aerial view of the main spans of the bridge.

The special first day postmark used at Bureaux included an elevation of the main spans of the bridge. KHP postmarks were used at other offices. One FDC is known cancelled to order at both sides of the bridge (Gelugor, Penang and Perai, Province Wellesley) and at the Penang Bureau. ⁶

Official presentation first day covers and folders are likely to have existed as for the issue of 22 January 1983, but have not yet been reported.

Withdrawal:

The issue was due to be withdrawn on 14 December 1985.

No.	S.G.	I.S.C.		Mint	Used
85.7.1	322	313	20c.	<input type="checkbox"/>	<input type="checkbox"/>
85.7.2	323	314	40c.	<input type="checkbox"/>	<input type="checkbox"/>
85.7.3	324	315	\$1.	<input type="checkbox"/>	<input type="checkbox"/>
85.7.4	-	MFDC-121	First day cover (1-3).	<input type="checkbox"/>	<input type="checkbox"/>

1 October 1985.

National Post Code System.

Post codes were introduced in Malaysia with effect from 1 October 1985. Five-digit numbers preceded the post town name in the address. It was planned to introduce optical character reader (OCR) sorting equipment during 1986. The first two digits indicated the postal area, 87-98 being in East Malaysia. From 1 October 1985, use of postcodes was compulsory and mail not post coded was likely to be delayed. All houses, business premises and government departments were sent cards notifying them of their correct postcode and a postcode directory was published.

4 November 1985.

Petroleum Production.



Natural oil seepages around Miri had been used for medical, lighting and boat-caulking purposes by Sarawak natives since early times. The Anglo-Saxon Petroleum Company gained exclusive exploitation rights and began drilling in August 1910, striking oil in December 1910. In 1985, Miri remained the only on-shore field. Off-shore prospecting began in the 1950s. The first off-shore production began in June 1968 off West Lutong, Sarawak. Petrolia Nasional Berhad (PETRONAS) was incorporated on 17 August 1974 and Malaysia became a net oil exporter in 1976.

Designed by Andamaz Enterprise, this issue comprised three counter sheets.

Counter sheets:

The three designs showed:

15c.: Petronas's first jack-up off-shore oil rig (28mm x 45mm);

20c.: Malaysia's first oil refinery (45mm x 28mm);

\$1: Map of Malaysia's territorial waters with known off-shore oil and gas fields (format as 20c.).

They were printed in sheets of 50 by Security Printers (Malaysia) using off-set lithography. Sheet markings were not recorded. The low fluorescence paper was unwatermarked and had matt gum. The comb perforations measured 12.2. On the 20c. sheet, the left margin was imperforate. The \$1 right margin was perforated through. Other margins were not recorded. Reports of alternative perforations on this issue were the result of confusion with the 1983 gas issue.

First day facilities:

The first day cover, sold at 20c., featured an oil rig and off-shore platform.

The special first day postmark included an oil derrick.

Official presentation packs are known for this issue, presented to VIPs on behalf of the Minister for Electricity, Telecommunications & Post, enclosed in a first day cover as for the issue of 22 January 1983. They were not sold to the general public. ¹

Withdrawal:

The issue was due to be withdrawn on 4 May 1986.

No.	S.G.	I.S.C.		Mint	Used
85.8.1	325	316	15c.	<input type="checkbox"/>	<input type="checkbox"/>
85.8.2	326	317	20c.	<input type="checkbox"/>	<input type="checkbox"/>
85.8.3	327	318	\$1.	<input type="checkbox"/>	<input type="checkbox"/>
85.8.4	-	MFDC-122	First day cover (1-3).	<input type="checkbox"/>	<input type="checkbox"/>

24-25 November and 7-8 December 1985.

Sarawak - 6th Philatelic & Numismatic Exhibition.

The Sarawak Philatelic & Numismatic Society held their sixth exhibition in two locations. Marking the society's fifteenth anniversary, it first opened on 24 and 25 November in Kuching, then on 7 and 8 December in Sibiu. SPNS issued a souvenir cover and cachet and Pos Malaysia applied a "KUCHING / * / 24NO85 / SARAWAK" skeleton circular date stamp. In Sibiu, a "SIBU / -7DIS85 / K1 / SARAWAK" counter cancellation was used. The Kuching example of the cover seen had the 20c. "interim" 1979 Definitive Issue stamp.

9 December 1985.

Perak - Installation of Sultan.



Azlan Shah was installed as the new Sultan of Perak on 9 December 1985.

Designed by Kathy Wong, this issue comprised three counter sheets.

Counter sheets:

The three stamps (15c., 20c., \$1) to a common 39mm x 26mm design showed the Sultan and the Perak Royal Crest. This issue was printed in sheets of 100 by Waddington by off-set lithography. Sheet markings were not recorded. The non-fluorescent-coated paper was unwatermarked. The comb perforations measured 14.1.

First day facilities:

The first day cover, printed by Rota Envelopes and sold at 20s., featured the Perak Royal Standard and ceremonial keris (Keris Taming Sari) and sword.

The special first day postmark included the state crest.

Official presentation first day covers and folders are likely to have existed as for the issue of 22 January 1983, but have not yet been reported.

Withdrawal:

The issue was available for one day throughout Malaysia but for three months in Perak, and was due to be withdrawn from Bureaux and from Perak post offices on 9 March 1986.

Remaindered covers are known handstamped in blue with "URUSAN POS" for official correspondence from Kanowit to Kuching on 13 March 1991.

No.	S.G.	I.S.C.		Mint	Used
85.9.1	328	193	15c.	<input type="checkbox"/>	<input type="checkbox"/>
85.9.2	329	194	20c.	<input type="checkbox"/>	<input type="checkbox"/>
85.9.3	330	195	\$1.	<input type="checkbox"/>	<input type="checkbox"/>
85.9.4	-	MFDC-PK16	First day cover (1-3).	<input type="checkbox"/>	<input type="checkbox"/>
85.9.5	-	-	- Handstamped for use on official correspondence.	-	<input type="checkbox"/>

11 March 1986.

Protected Wildlife (II) - Birds (I)



Designed by Peter Khang Howe Ket, this issue comprised two counter sheets containing se-tenant pairs.

Counter sheets:

Each stamp showed a different member of the pheasant family as shown below:

Value	English Name	Malay Name (on stamp)	Latin Name (on stamp)
20c.(A)	Crested Fireback Pheasant	Ayam Pagar	<i>Lophura ignita</i> .
20c.(B)	Malaya Peacock-Pheasant	Merak Pongsu	<i>Pavo malacense</i> . ⁷
40c.(A)	Bulwer's Pheasant	Ayam Pakiak	<i>Lophura bulweri</i> .
40c.(B)	Great Argus Pheasant	Kuang Raya	<i>Argusianus argus</i> .

The two 20c. were 30mm x 41mm, whilst the 40c. were 41mm x 30mm. The designs were printed in alternate columns (A odd, B even) in single-value sheets, giving horizontal pairs.

They were printed in sheets of 100 (10 x 10) by Security Printers (Malaysia) using standard four-colour off-set lithography on fluorescent white paper. The only sheet markings were 1A (x4) above and below columns 1 and 10 and colour dots to the left and right of R1 and R10. This was the first watermarked special issue since 1970 and introduced the Multiple SPM watermark. That on the 20c. was upright, whilst the 40c. was sideways reading up. The comb perforations measured 13.4 on the 20c.⁸, the left margin being imperforate and the rest perforated through, whilst the 40c. appeared with two perforations, 13.4 or 11.8 x 12.1. The 40c. P.13.4 top margin was perforated through.

Proofs:

Imperforate progressive proof material appeared on the market in 2008. Reported items include 40c. black only, 40c. black and cyan, and 40c. magenta, cyan and yellow.

First day facilities:

The first day cover, sold at 20s, featured the Great Argus Pheasant.

The special first day postmark included a pheasant displaying.

Official presentation first day covers and folders are likely to have existed as for the issue of 22 January 1983, but have not yet been reported.

Withdrawal:

The issue was due to be withdrawn on 11 September 1986.

Remaindered covers were handstamped "URUSAN POS" and used for official correspondence, such as from Mukah to Kuching on 20 February 1989.

No.	S.G.	I.S.C.		Mint	Used
86.1.1	331	319	20c.(A). P.13.4.	<input type="checkbox"/>	<input type="checkbox"/>
86.1.2	332	320	20c.(B). P.13.4.	<input type="checkbox"/>	<input type="checkbox"/>
86.1.3	331a	MC-123	Se-tenant horizontal pair (1-2).	<input type="checkbox"/>	<input type="checkbox"/>
86.1.4	333	321	40c.(A). P.13.4.	<input type="checkbox"/>	<input type="checkbox"/>
86.1.4a	333b	321a	- P.11.8 x 12.1.	<input type="checkbox"/>	<input type="checkbox"/>
86.1.5	334	322	40c.(B). P.13.4.	<input type="checkbox"/>	<input type="checkbox"/>
86.1.5a	334b	322a	- P.11.8 x 12.1.	<input type="checkbox"/>	<input type="checkbox"/>
86.1.6	333a	⁹	Se-tenant horizontal pair (4-5).	<input type="checkbox"/>	<input type="checkbox"/>
86.1.6a	333ba	322b	- (4a-5a).	<input type="checkbox"/>	<input type="checkbox"/>
86.1.7	-	MFDC-123	First day cover (3, 6).	<input type="checkbox"/>	<input type="checkbox"/>
86.1.7a	-	-	- (1-2, 4a-5a).	-	<input type="checkbox"/>
86.1.8	-	-	- Handstamped for use on official mail	-	<input type="checkbox"/>

14 April 1986.

Pacific Area Travel Association Conference.



The 1986 PATA Annual Conference and “Pacific Travel Mart” was held at the Putra World Centre in Kuala Lumpur from 9 to 16 April 1986.

Designed by AMC Group of Advertising Agencies, this issue comprised two counter sheets with se-tenant triplets.

Counter sheets:

The six 21mm x 30mm designs, each incorporating the PATA’86 turtle-in-sun-glasses emblem, formed two se-tenant triplets, being printed in successive columns of the sheet. The stamps showed respectively:

- 20c.(A): Two Kadazan dancers against a background of Mount Kinabalu (Sabah);
- 20c.(B): An Iban dancer, river scene with barges and long house (Sarawak);
- 20c.(C): Portuguese flamenco dancers and Porta da Santiago fortress (Malacca);
- 40c.(A): A Malay dancer and Kuala Lumpur Law Courts (Sultan Abdul Samad Building);
- 40c.(B): A Chinese opera dancer and the Penang Bridge;
- 40c.(C): An Indian dancer and the Batu Caves (Selangor).

They were printed in sheets of 90 (three triplets x 10) by The House of Questa using standard four-colour off-set lithography. The printing plate contained two panes, 1A and 1B, with pane numbers (x4) spanning above and below columns 1-2 and 8-9. Available evidence suggests that pane 1A contained the 20c. and pane 1B contained the 40c. Two colour dots appeared against each of the rows 1-2 and 9-10 at both left and right. The non-fluorescent paper was unwatermarked. The comb perforations measured 14.9 x 14.2. The left and right margins were perforated through. The bottom margin of pane 1A was imperforate (the others being perforated through, while 1B was perforated through at bottom, left and right but not at top. Examination of multiples showed that the 20c. 1A was perforated from bottom upwards, whilst the 40c. 1B was perforated from top downwards!

First day facilities:

The first day cover, sold at 20c., featured the PATA 86 emblem.

The special first day postmark included the same emblem.

Official presentation first day covers and folders are likely to have existed as for the issue of 22 January 1983, but have not yet been reported.

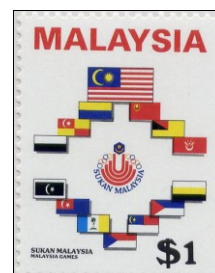
Withdrawal:

The issue was due to be withdrawn on 14 July 1986.

No.	S.G.	I.S.C.		Mint	Used
86.2.1	335	323	20c.(A).	<input type="checkbox"/>	<input type="checkbox"/>
86.2.2	336	324	20c.(B).	<input type="checkbox"/>	<input type="checkbox"/>
86.2.3	337	325	20c.(C).	<input type="checkbox"/>	<input type="checkbox"/>
86.2.4	335a	-	Se-tenant triplet (1-3).	<input type="checkbox"/>	<input type="checkbox"/>
86.2.5	338	326	40c.(A).	<input type="checkbox"/>	<input type="checkbox"/>
86.2.6	339	327	40c.(B).	<input type="checkbox"/>	<input type="checkbox"/>
86.2.7	340	328	40c.(C).	<input type="checkbox"/>	<input type="checkbox"/>
86.2.8	338a	-	Se-tenant triplet (5-7).	<input type="checkbox"/>	<input type="checkbox"/>
86.2.9	-	MFDC-124	First day cover (4, 8).	<input type="checkbox"/>	<input type="checkbox"/>

19 April 1986.

Malaysia Games.



The first Malaysia Games were held in Kuala Lumpur from 19 to 26 April 1986. The event was opened at the Merdeka Stadium by the King. Teams from the 14 states, the armed forces and the Police took part in sixteen sports.

Designed by Design Excelsior, this issue comprised three counter sheets.

Counter sheets:

The stamps showed:

20c.: Stylised competitors (rugby, basketball, cricket, table tennis, badminton, sepak raga, hockey, football) (38mm x 31mm);

40c.: The Games emblem and symbolic representations of various games (31mm x 38mm);

\$1: National and State flags (31mm x 38mm).

They were printed in sheets of 50 by Security Printers (Malaysia) using standard four-colour off-set lithography, the yellow being pale on the 20c. and orange-yellow on the others. Plate numbers 1A (x4) above and below the first and last columns and SPM emblems (x4) to the left and right of the top and bottom rows. The paper gave greenish-white fluorescence under UV light and had the Multiple SPM watermark, upright on 40c. and \$1 and sideways reading down on the 20c. The comb perforations measured 12.2 x 11.8 (20c.) or 11.8 x 12.2 (40c. and \$1).

First day facilities:

The first day cover, printed by Rota Envelopes and sold at 20c., featured the Games emblem and a map of Malaysia.

The special first day postmark included the Games emblem.

Official presentation first day covers and folders exist as for the issue of 22 January 1983.¹

Remaindered covers were handstamped "URUSAN POS" and used for official correspondence, such as from Sarikei to Kuching on 12 September 1987.

Withdrawal:

The issue was due to be withdrawn on 19 July 1986.

No.	S.G.	I.S.C.		Mint	Used
86.3.1	341	329	20c.	<input type="checkbox"/>	<input type="checkbox"/>
86.3.2	342	330	40c.	<input type="checkbox"/>	<input type="checkbox"/>
86.3.3	343	331	\$1.	<input type="checkbox"/>	<input type="checkbox"/>
86.3.4	-	MFDC-125	First day cover (1-3).	<input type="checkbox"/>	<input type="checkbox"/>
86.3.5	-	-	- Handstamped for use on official correspondence.	-	<input type="checkbox"/>

26 June 1986.

National Association for the Prevention of Drugs.



This issue marked the tenth anniversary of the National Association for Prevention of Drugs (PEMADAM), which was formed on 22 March 1976 and officially registered on 26 June 1976 with the aim of assisting national and local authorities in combating drug trafficking and abuse, preventative education and victim after-care.

Designed by Kathy Design, this issue comprised three counter sheets.

Counter sheets:

The three stamps all contained the Association's emblem, together with a symbolic device and a slogan. They additionally showed:

20c.: A skull with the slogan "Drugs can kill" (38mm x 28mm);

40c.: A Swallow with "Stay free from drugs" (38mm x 28mm);

\$1: An addict and slogan "Drugs can destroy" (29mm x 38mm).

They were printed in sheets of 100 (10 x 10) by Security Printers (Malaysia) using five-colour off-set lithography (grey, brown, red, green, black) for the 20c. and 40c. and four-colour (grey, red, green, black) for the \$1. Plate numbers 1A (x5 or x4) above and below first and last columns and SPM emblems (x5 or x4) to the left and right of top and bottom rows. The paper was phosphor-coated (green-white fluorescence, yellow-green after-glow). The Multiple SPM watermark was normally sideways reading down on the 20c.(sideways reading up exists on first day cover) and \$1 and upright on the 40c. The comb perforations measured 13.2 x 12.9 (20c., 40c.) or 12.9 x 13.2 (\$1).

Proof material:

Colour separation proofs of all values of this issue have come onto the market.

First day facilities:

The first day cover, sold at 20c., was printed by Rota Envelopes and featured the head of the addict shown on the \$1 stamp.

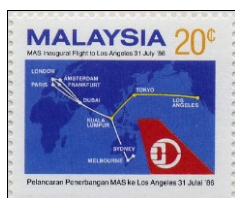
The special first day postmark included the association emblem.

Unsold first day covers were recycled for official postage, handstamped "Urusan Pos". An example is known used Sibu to Kuching 8 April 1989.

Withdrawal:

The issue was due to be withdrawn on 26 September 1986.

No.	S.G.	I.S.C.		Mint	Used
86.4.1	352	340	20c. Wmk. SD.	<input type="checkbox"/>	<input type="checkbox"/>
86.4.1a	352w	-	- Wmk. SU.	<input type="checkbox"/>	<input type="checkbox"/>
86.4.2	353	341	40c. Wmk. U.	<input type="checkbox"/>	<input type="checkbox"/>
86.4.3	354	342	\$1. Wmk. SD.	<input type="checkbox"/>	<input type="checkbox"/>
86.4.4	-	MFDC-127	First day cover (1, 2, 3).	<input type="checkbox"/>	<input type="checkbox"/>
86.4.4a	-	-	- (1a, 2, 3).	-	<input type="checkbox"/>
86.4.5	-	-	- Handstamped for official correspondence.	-	<input type="checkbox"/>

31 July 1986.**Malaysian Airline System.**

Issued to mark the inauguration of the first MAS Trans-Pacific service, the Kuala Lumpur - Tokyo (Japan) - Los Angeles (USA) route, using Boeing 747-236 Combi-SUD (Stretched Upper Deck) aircraft.

Designed by Clive Abbott for PTM Thompson Advertising, this issue comprised three counter sheets.

Counter sheets:

The three 32mm x 28mm designs showed:

20c.: A map of MAS Boeing 747 routes and MAS aircraft tail fin;

40c.: MAS tail fin, stylised Boeing 747 aircraft and Kuala Lumpur - Tokyo - Los Angeles route diagram;

\$1: MAS tail fin and stylised Boeing 747 aircraft (\$1).

They were printed in sheets of 100 by Security Printers (Malaysia) using off-set lithography. Sheet markings were not recorded. The paper was phosphor-coated, giving a greenish-white fluorescent reaction and yellow-green after-glow. The watermark was multiple SPM sideways reading up. The comb perforations measured 13.9 x 13.6.

Essays:

Unadopted artwork and hand-painted essays, including the original sketches for the adopted designs, by Clive Abbott have appeared on the market.

First day facilities:

The first day cover, sold at 20s., featured flags of Malaysia and USA.

The special first day postmark included a Boeing 747.

Private covers were carried on the first flights in both directions - See Chapter 45 in Volume 3.

Withdrawal:

The issue was due to be withdrawn on 31 October 1986.

Remaindered covers were handstamped "URUSAN POS" and used for official correspondence, such as from Song to Kuching on 28 September 1987 or Daro to Kuching on 21 January 1988.

No.	S.G.	I.S.C.		Mint	Used
86.5.1	355	343	20c.	<input type="checkbox"/>	<input type="checkbox"/>
86.5.2	356	344	40c.	<input type="checkbox"/>	<input type="checkbox"/>
86.5.3	357	345	\$1.	<input type="checkbox"/>	<input type="checkbox"/>
86.5.4	-	MFDC-128	First day cover (1-3).	<input type="checkbox"/>	<input type="checkbox"/>
86.5.5	-	-	- Handstamped for use on official correspondence.	-	<input type="checkbox"/>

3 November 1986.

Productivity Year.



This issue marked Productivity Year, the culmination of a five-year Productivity Campaign Plan. It also marked the twentieth anniversary of the National Productivity Council (featured on the 20c.) and the Silver Jubilee of the Asian Productivity Organisation (40c., \$1). The APO was formed at a convention in 1961 to speed up the economic development of Asian countries. By 1986, it had sixteen member countries. The NPC was formed by Act No. 19 of 1966 with effect from 1 March 1966 with responsibility for improving businesses and management skills in both the private and public sectors.

Designed by Mark Chin (trading as Mark Design), this issue comprised three counter sheets.

Counter sheets:

The designs featured:

20c.: Worker ants engaged in building construction and the ant mascot, symbolic of diligence, industriousness, co-operation and forward planning (28mm x 33mm);

40c.: Planning and design (drawing board, activity planning chart, hard-hatted individual on telephone, office worker with calculating machine, production floor), symbolic of management (33mm x 28mm);

\$1: Computers, robot welder and the Proton car assembly line, symbolic of technology (33mm x 28mm).

They were printed in sheets of 100 (10 x 10) by Security Printers (Malaysia) using standard four-colour off-set lithography. Sheet markings include plate number 1A (x4) above and below the left and right columns and SPM emblems (x4) to the left and right of the top and bottom rows. The phosphor-coated paper gave a greenish white fluorescence and a yellow-green after-glow. The Multiple SPM watermark was upright on the 20c. and sideways reading up on the 40c. and \$1. The comb perforations measured 13.6 x 13.9 (20c.) or 13.9 x 13.6 (40c., \$1). The 20c. had the bottom margin perforated through and imperforate left margin. The other values have the bottom margin imperforate and the right margin perforated through. Other margins were not recorded.

First day facilities:

The first day cover, printed by Rota Envelopes and sold at 20c., featured the ant mascot and the organisation emblems. The special first day postmark included the NPC emblem.

Withdrawal:

The issue was due for withdrawal on 3 February 1987.

Remaindered covers were handstamped "URUSAN POS" and used for official correspondence, such as from Balingian to Kuching on 16 November 1990.

No.	S.G.	I.S.C.		Mint	Used
86.6.1	358	346	20c.	<input type="checkbox"/>	<input type="checkbox"/>
86.6.2	359	347	40c.	<input type="checkbox"/>	<input type="checkbox"/>
86.6.3	360	348	\$1.	<input type="checkbox"/>	<input type="checkbox"/>
86.6.4	-	MFDC-129	First day cover.	<input type="checkbox"/>	<input type="checkbox"/>
86.6.5	-	-	- Handstamped for use on official correspondence.	-	<input type="checkbox"/>

20 December 1986.

Historic Buildings (I).



Designed by Peter Khang Howe Ket, this issue comprised four counter sheets.

Counter sheets:

The four 38mm x 28mm designs showed:

15c.: The Istana Lama Seri Menanti (Old Seri Menanti Palace), Kuala Pilah, Negri Sembilan, built in 1902 for Yang di-Pertuan Besar Tuanku Muhammad;

20c.: The Istana Kenangan (Remembrance Palace), also known as Istana Lembah (Plain Palace) or Istana Tepus (Ginger Palace), Kuala Kangsar, Perak, built in 1931 for Sultan Iskandar Shah;

40c.: The Stadthuys (Old Town Hall Building), Malacca, built by the Dutch in 1641-1656 and occupied from 1982 by the Historical Museum of Malacca (later Melaka History & Ethnography Museum);

\$1: The Istana Kuching or Astana (Rajah's Palace), Kuching, Sarawak built in 1870 for Rajah Sir Charles Brooke.

They were printed in sheets of 100 (10 x 10) by Security Printers (Malaysia) using standard four-colour off-set lithography. Sheet markings were limited to plate number 1A (x4) above and below columns 1 and 10 and SPM emblems (x4) to the left and right of R1 and R10. Guide lines appeared in the right margins between rows 5 and 6. The phosphor-coated paper gave a greenish white fluorescence and a yellow-green after-glow. The watermark was Multiple SPM sideways reading up. The comb perforations measured 13.2 x 12.9. The bottom margin was imperforate and the rest perforated through.

First day facilities:

The first day cover, printed by Rota Envelopes and sold at 20c., featured the Istana Kenangan.

The special first day postmark included Istana Lama Seri Menanti.

Withdrawal:

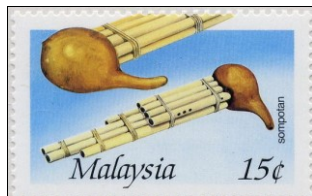
The issue was due to be withdrawn on 20 June 1987.

Remaindered covers were handstamped "URUSAN POS" and used for official correspondence, such as from Niah to Kuching on 20 May 1990.

No.	S.G.	I.S.C.		Mint	Used
86.7.1	361	349	15c.	<input type="checkbox"/>	<input type="checkbox"/>
86.7.2	362	350	20c.	<input type="checkbox"/>	<input type="checkbox"/>
86.7.3	363	351	40c.	<input type="checkbox"/>	<input type="checkbox"/>
86.7.4	364	352	\$1.	<input type="checkbox"/>	<input type="checkbox"/>
86.7.5	-	MFDC-130	First day cover (1-4).	<input type="checkbox"/>	<input type="checkbox"/>
86.7.6	-	-	- Handstamped for use on official correspondence.	-	<input type="checkbox"/>

7 March 1987.

Musical Instruments.



Designed by Kathy Wong, this issue comprised four counter sheets.

Counter sheets:

The four designs showed the following local instruments:

15c.: Sompotan (Sabah Dusun bamboo bagpipes) (45mm x 28mm);

20c.: Saphi (Sarawak four-stringed chordophone) (45mm x 28mm);

50c.: Serunai (quadruple-reed flute) (28mm x 45mm);

80c.: Rebab (three-stringed spiked fiddle) (28mm x 45mm).

They were printed in sheets of 50 by Security Printers (Malaysia) using off-set lithography. Sheet markings were not recorded. The phosphor-coated paper gave a greenish white fluorescence and a yellow-green after-glow. The Multiple SPM watermark was upright on 15c., 20c. and sideways reading up on 50c., 80c. The comb perforations measured 12.2.

First day facilities:

The first day cover, printed by Rota Envelopes and sold at 20s., featured a musician playing the serunai with a wayang shadow play in the background.

The special first day postmark used at Kuala Lumpur Bureau included the mouthpiece of a serunai.

Withdrawal:

The issue was due to be withdrawn on 7 September 1987.

Remaindered covers are known variously handstamped for official correspondence, such as "URUSAN POS" on a cover from Long Lama to Kuching on 7 February 1990 and boxed "O.P.S." on covers from Sibu to Kuching between 4 September and 28 October 1989.

No.	S.G.	I.S.C.		Mint	Used
87.1.1	365	353	15c.	<input type="checkbox"/>	<input type="checkbox"/>
87.1.2	366	354	20c.	<input type="checkbox"/>	<input type="checkbox"/>
87.1.3	367	355	50c.	<input type="checkbox"/>	<input type="checkbox"/>
87.1.4	368	356	80c.	<input type="checkbox"/>	<input type="checkbox"/>
87.1.5	-	MFDC-131	First day cover (1-4).	<input type="checkbox"/>	<input type="checkbox"/>
87.1.6	-	-	- Handstamped for use on official correspondence.	-	<input type="checkbox"/>

6 April 1987.**International Year of Shelter for the Homeless.**

The United Nations declared 1987 the International Year of Shelter for the Homeless (IYSH). Malaysia's NADI project aimed at building 80,000 low-cost housing units in the Federal Territory between 1986 and 1988 in conjunction with the IYSH. Additional projects have been aimed at the restructuring and development of traditional villages.

Designed by Kajian Senilukis, Senireka of the MARA Institute of Technology in Shah Alam and Raja Zahabuddin bin Raja Yaacob, this issue comprised two counter sheets.

Counter sheets:

The two 48mm x 32mm designs showed:

20c.: A modern low-cost rural housing scheme;

\$1: Stylised families and houses.

They were printed in sheets of 50 by Security Printers (Malaysia) using off-set lithography. Sheet markings were not recorded. The phosphor-coated paper gave a greenish white fluorescence and a yellow-green after-glow. The Multiple SPM watermark was upright. The comb perforations measured 12.2.

First day facilities:

The first day cover, printed by Rota Envelopes and sold at 20s., was based on the \$1 stamp design.

The special first day postmark included the IYSH emblem.

Withdrawal:

The issue was due to be withdrawn on 6 July 1987.

Remaindered covers were handstamped "URUSAN POS" for use on official correspondence, such as from Bekenu to Kuching on 14 May 1988 and Sibul to Kuching on 8 February 1990.

No.	S.G.	I.S.C.		Mint	Used
87.2.1	369	357	20c.	<input type="checkbox"/>	<input type="checkbox"/>
87.2.2	370	358	\$1.	<input type="checkbox"/>	<input type="checkbox"/>
87.2.3	-	MFDC-132	First day cover (1-2).	<input type="checkbox"/>	<input type="checkbox"/>
87.2.4	-	-	- Handstamped for use on official correspondence.		<input type="checkbox"/>

18-19 April 1987.**FIAP Mini-Asian Stampex 87.**

This was held in Penang Town Hall to coincide with a FIAP EXCO (Executive Committee Board) meeting. FIAP is the Federation of Inter-Asian Philately, the regional body representing national philatelic organisations in Asia at the Federation International de Philatelie (FIP). Souvenirs were issued both by Philatelic Society of Malaysia and PSPP (the local society). PSM issued a Stamp Postcard showing six of the earliest Penang postmarks. PSPP issued a cover showing the event emblem and a 10c. independence stamp of 1963. Pos Malaysia supplied a temporary post office with a special cachet "FIAP Mini Asian / Stampex 87 / 18 - 19 April / Penang, Malaysia". Serviced items received cds "PULAU PINANG / 18APR87 / K9".

25 May 1987.

Federal Territory - Vending Machine Postage Labels.

During the 1980s, there was a growing interest world-wide in the use of “stamps” printed on demand by coin-operated machines in public places. A leading supplier was Frama AG, a Swiss company, of Lauperswil, near Berne, who developed the machine in 1976 for the Swiss Post Office. Thus postage labels are often referred to indiscriminately as “Frama Labels”, irrespective of machine supplier. Malaysia purchased a single machine from Frama, which was installed at City Point in the Dayabumi Complex, Kuala Lumpur.

By an uncredited designer, the 40mm x 33mm label showed a hibiscus flower, the value and machine number WP001. It was printed in red on a white gummed paper stock which had an overall yellow security background printed on it, incorporating the octagonal POS emblem. About 1200 labels could be printed from a single paper roll. The machine accepted 5s., 10s., 20s. and 50s. coins. A “basic set” of 15s., 20s., 40s. was supplied by three pre-programmed buttons. The fourth button could print any value in multiples of 5s. up to RM5, depending how much money had been inserted in the machine. If no buttons were pressed, a label for any monetary balance left in the machine was printed after 30 seconds. The paper was phosphor-coated, giving a bluish-white fluorescent reaction and yellow-green after-glow under ultra-violet light. There was no watermark and the labels had no perforations.

First day facilities:

The first announcement of the issue came in radio and press announcements on the day of issue. No formal first day facilities were provided, other than an instruction to a clerk at the GPO in Dayabumi Complex to handstamp privately-produced first day covers. The machine was said to have been extremely unreliable on the day of issue and problems were experienced by collectors with both counter clerks and postal staff who refused to cancel them as either not being stamps, or being meter marks, which did not receive cancellations.¹⁰ Some covers arrived through the mail with postmarks on the back of the envelope only.

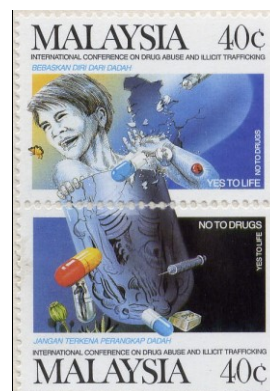
No.	S.G.	I.S.C.		Mint	Used
87.3.1	-	-	5s.	<input type="checkbox"/>	<input type="checkbox"/>
87.3.2	-	-	10s.	<input type="checkbox"/>	<input type="checkbox"/>
87.3.3	-	-	15s.	<input type="checkbox"/>	<input type="checkbox"/>
87.3.4	-	-	20s.	<input type="checkbox"/>	<input type="checkbox"/>
87.3.5	-	-	25s.	<input type="checkbox"/>	<input type="checkbox"/>
87.3.6	-	-	30s.	<input type="checkbox"/>	<input type="checkbox"/>
87.3.7	-	-	35s.	<input type="checkbox"/>	<input type="checkbox"/>
87.3.8	-	-	40s.	<input type="checkbox"/>	<input type="checkbox"/>
87.3.9	-	-	45s.	<input type="checkbox"/>	<input type="checkbox"/>
87.3.10	-	-	50s.	<input type="checkbox"/>	<input type="checkbox"/>
87.3.11	-	-	55s.	<input type="checkbox"/>	<input type="checkbox"/>
87.3.12	-	-	60s.	<input type="checkbox"/>	<input type="checkbox"/>

(The above values have been seen by the author. 65s. and all values at 5s. intervals to RM5.00 could, in theory, exist - numbers 87.3.13 to 87.3.100 respectively have been reserved.)

[1 June 1987]**Pictorial Postcards.**

It was proposed to issue a series of pictorial postcards, but the issue was postponed (see Johore 2 May 1990 in Chapter 22).

8 June 1987.

International Conference on Drug Abuse and Illicit Trafficking.

The International Conference on Drug Abuse and Illicit Trafficking (ICDAIT) was called in 1985 by the United Nations General Assembly and took place in Vienna, Austria, from 17 to 26 June 1987. Dato' Seri Dr. Mahathir bin Mohamad, Prime Minister of Malaysia was elected the President of ICDAIT.

Designed by Kathy Wong, this issue comprised two counter sheets with se-tenant stamps.

Counter sheets:

The two composite designs bear the conference slogan "Yes to Life - No to Drugs" and form two se-tenant vertical pairs of 38mm x 28mm stamps in separate sheets. The upper (A) stamp in each pair showed a healthy child, whilst the lower (B) stamp showed a skeletal body wasted by the effects of drugs. The 20c.(A) also showed a rainbow, a family flying a kite and Orange Albatross butterflies. The 40c.(A) shows a child rejecting drugs and includes capsules and the same butterfly. The 40s.(B) shows a skeleton in a capsule, an opium poppy and a hypodermic needle.

They were printed in sheets of 100 stamps (50 pairs) by Security Printers (Malaysia) using off-set lithography. Sheet markings were not recorded. The phosphor-coated paper gave a greenish white fluorescence and a yellow-green after-glow. It normally had watermark Multiple SPM sideways reading up.¹¹ The 20c. also exists sideways reading down. The comb perforations measured 13.2 x 12.9.

First day facilities:

The first day cover, sold at 20c., featured the conference emblem, the UN laurel wreath with a sunburst comprised by ribbons containing the slogan in various languages.

The special first day postmark included "ICDAIT" and "DADAH" (no to drugs).

Withdrawal:

The issue was due to be withdrawn on 8 September 1987.

Remaindered covers were handstamped "URUSAN POS" for official correspondence, such as from Miri to Kuching on 21 October 1989.

No.	S.G.	I.S.C.		Mint	Used
87.4.1	371bw	359	20c.(A). Wmk. SU.	<input type="checkbox"/>	<input type="checkbox"/>
87.4.1a	371	-	- Wmk. SD.	<input type="checkbox"/>	<input type="checkbox"/>
87.4.2	372bw	360	20c.(B). Wmk. SU.	<input type="checkbox"/>	<input type="checkbox"/>
87.4.2a	372	-	- Wmk. SD.	<input type="checkbox"/>	<input type="checkbox"/>
87.4.3	371a	-	Se-tenant pair (1-2).	<input type="checkbox"/>	<input type="checkbox"/>
87.4.3a	371bwa	-	-- (1a-2a).	<input type="checkbox"/>	<input type="checkbox"/>
87.4.4	373	361	40c.(A). Wmk. SU.	<input type="checkbox"/>	<input type="checkbox"/>
87.4.5	374	362	40c.(B). Wmk. SU.	<input type="checkbox"/>	<input type="checkbox"/>
87.4.6	373a	-	Se-tenant pair (4-5).	<input type="checkbox"/>	<input type="checkbox"/>
87.4.7	-	MFDC-133	First day cover (3, 6).	<input type="checkbox"/>	<input type="checkbox"/>
87.4.7a	-	-	- (3a, 6)		<input type="checkbox"/>
87.4.8	-	-	- Handstamped for use on official correspondence.		<input type="checkbox"/>

13 July 1987.

Sultan Mahmud Hydro-electric Scheme.

The Sultan Mahmud Hydro-electric power station scheme at Kenyir, Trengganu was opened by the Sultan on 13 July 1987. It had four 100MW generating sets, producing 1,600 million units per annum. The Kenyir Dam was granite rock-filled with granitic clay core and was 150m high, with a normal water head of 120m. The dam impounded 13,600 km³ of water with a surface area of 36,900 hectares and had a catchment area of 260,000 hectares.

Designed by Kathy Wong, this issue comprised two counter sheets.

Counter sheets:

The two 48mm x 32mm designs showed:

20c.: The spillway and power station;

\$1: The dam, spillway and reservoir.

They were printed in sheets of 50 by Security Printers (Malaysia) using standard four-colour off-set lithography. The plate numbers (1A x4) and SPM emblems (x4) appeared in all four corners of the sheet. The phosphor-coated paper gave a white fluorescence and yellow-green after-glow under UV light. The Multiple SPM watermark was upright. The comb perforations measured 12.2.

First day facilities:

The first day cover, sold at 20c., featured an aerial photograph of the completed dam and power station.

The special first day postmark included an electricity pylon. The "normal" postmark was for Kuala Trengganu, instead of Kuala Lumpur.

Withdrawal:

Remaindered first day covers are known handstamped "URUSAN POS" for official correspondence from Matu, Sarawak on 5 January 1990.

No.	S.G.	I.S.C.		Mint	Used
87.5.1	375	363	20c.	<input type="checkbox"/>	<input type="checkbox"/>
87.5.2	376	364	\$1.	<input type="checkbox"/>	<input type="checkbox"/>
87.5.3	-	MFDC-134	First day cover (1-2).	<input type="checkbox"/>	<input type="checkbox"/>
87.5.4	-	-	- Handstamped for use on official correspondence.	-	<input type="checkbox"/>

1 September 1987.

33rd Commonwealth Parliamentary Conference.



The thirty-third annual General Assembly of the Commonwealth Parliamentary Association was held at Parliament House, Kuala Lumpur from 26 August to 6 September 1987. Malaysia hosted the conference previously in 1963 and 1971.

Designed by Professor Dato' Raja Zahabuddin bin Raja Yaacob,

Counter sheets:

The two 48mm x 32mm designs (20c., \$1) both showed the crossed Maces of the Malaysian Parliament and the Parliament Building, Kuala Lumpur, but in different arrangements.

They were printed in sheets of 50 (5 x 10) by Security Printers (Malaysia) using four-colour off-set lithography (cyan, yellow, magenta, grey). Sheet markings were limited to 1A (x4) above and below columns 1 and 5 and SPM emblems (x4) to the left and right of R1 and R10. The phosphor-coated paper gave a greenish white fluorescence and a yellow-green after-glow. The Multiple SPM watermark was upright. The comb perforations measured 12.2. The left margin was imperforate and the remainder perforated through.

First day facilities:

The first day cover, printed by Rota Envelopes and sold at 20c., featured the flags of the Commonwealth.

The special first day postmark included the Parliament Building.

Withdrawal:

The issue was due to be withdrawn on 1 December or earlier if stocks were exhausted.

No.	S.G.	I.S.C.		Mint	Used
87.6.1	377	365	20c.	<input type="checkbox"/>	<input type="checkbox"/>
87.6.2	378	366	\$1.	<input type="checkbox"/>	<input type="checkbox"/>
87.6.3	-	MFDC-135	First day cover (1-2).	<input type="checkbox"/>	<input type="checkbox"/>

26 October 1987.

Asia-Pacific Transport & Communications Decade.



1985 was the start of the Asia-Pacific Transport and Communications Decade, established by the General Assembly of the United Nations Economic and Social Commission for Asia and the Pacific (ESCAP) on 18 December 1984.

Designed by Mark Design, this issue comprised four counter sheets.

Counter sheets:

The four 38mm x 28mm designs showed:

15c.: A satellite earth station, a satellite and the Earth from space;

20c.: Keretapi Tanah Melayu Class 22 diesel locomotive hauling a passenger train away from Kuala Lumpur station and a Proton Saga car;

40c.: Two container ships of the Malaysia International Shipping Company and an articulated lorry;

\$1: Malaysian Airline System Boeing 747 airliners on the ground and in the air at Kuala Lumpur International Airport, Subang.

They were printed in sheets of 50¹² in two panes of 25 (5 x 5) by Security Printers (Malaysia) using off-set lithography. Sheet markings were not recorded. The phosphor-coated paper gave a greenish white fluorescence and a yellow-green after-glow. The Multiple SPM watermark was normally sideways reading up.¹³ The 40c. also exists with watermark sideways reading down. The comb perforations measured 13.2 x 12.9. The bottom sheet margin of all values was imperforate. Other margins were not recorded.

First day facilities:

The first day cover, sold at 20s., featured a composite of the stamp design elements.

The special first day postmark included a satellite earth station dish.

Withdrawal:

Remaindered first day covers are known handstamped "URUSAN POS" for official correspondence from Song, Sarawak on 10 August 1989 and Belawai, Sarawak on 8 November 1989.

No.	S.G.	I.S.C.		Mint	Used
87.7.1	379	367	15c. Wmk. SU.	<input type="checkbox"/>	<input type="checkbox"/>
87.7.2	380	368	20c. Wmk. SU.	<input type="checkbox"/>	<input type="checkbox"/>
87.7.3	381w	369	40c. Wmk. SU.	<input type="checkbox"/>	<input type="checkbox"/>
87.7.3a	381	-	- Wmk. SD.	<input type="checkbox"/>	<input type="checkbox"/>
87.7.4	382	370	\$1. Wmk. SU.	<input type="checkbox"/>	<input type="checkbox"/>
87.7.5	-	MFDC-136	First day cover (1-4).	<input type="checkbox"/>	<input type="checkbox"/>
87.7.6			- Handstamped for use on official correspondence.	-	<input type="checkbox"/>

14 November 1987.

Protected Wildlife (III) - Animals (II)



Designed by Ong Soo Keat, this issue comprised four counter sheets and four PHQ cards.

Counter sheets:

The four 38mm x 28mm stamps showed four of the eight "big cats" found in Malaysian forest (the others were the Tiger, Leopard (Panther), Leopard Cat and Bay Cat):

Value	English Name	Malay Name (on stamp)	Latin Name ¹⁴ (on stamp)
15c.	Temminck's Golden Cat	Kucing Tulap	<i>Felis temminckii</i>
20c.	Flat-headed Cat.	Kucing Hutan	<i>Felis planiceps</i>
40c.	Marbled Cat.	Kucing Dahan	<i>Felis marmorata</i>
\$1	Clouded Leopard.	Harimau Dahan	<i>Neofelis nebulosa</i>

They were printed in sheets of 100 by Security Printers (Malaysia) using standard four-colour off-set lithography. Plate numbers 1A (x4) and SPM emblems appeared in all four corners of the sheet. The phosphor-coated paper showed a white fluorescent reaction and yellow-green after-glow. It had the Multiple SPM watermark, upright on the \$1 stamp and sideways reading up on the other values. The comb perforations measured 13.2 x 12.9.

PHQ cards:

This issue was accompanied by a set of four 142mm x 105mm unstamped picture postcards, each showing an enlarged version of one of the stamps on a magnolia background. They were sold at 25c. each and were designated "Series 1/87". This type of card, officially described in Malaysia as a "Post Office Stamp Card", is known more generally in philately as a "PHQ Card" to differentiate from the "Maxicard" which showed a related design but not a direct reproduction of the stamp.

First day facilities:

The first day cover, sold at 20s., featured a full-face portrait of a tiger by Kathy Wong.

The special first day postmark included a paw print. PHQ cards were also serviced with the related stamp affixed to the picture side.

Withdrawal:

The issue was due to be withdrawn on 14 May 1988.

Remaindered first day covers were handstamped "URUSAN POS" and used for correspondence between offices, such as Bintagor, Sarawak to PHQ Kuching on 5 October 1991.

No.	S.G.	I.S.C.		Mint	Used
87.8.1	383	371	15c.	<input type="checkbox"/>	<input type="checkbox"/>
87.8.2	384	372	20c.	<input type="checkbox"/>	<input type="checkbox"/>
87.8.3	385	373	40c.	<input type="checkbox"/>	<input type="checkbox"/>
87.8.4	386	374	\$1.	<input type="checkbox"/>	<input type="checkbox"/>
87.8.5	-	MFDC-137	First day cover (1-4).	<input type="checkbox"/>	<input type="checkbox"/>
87.8.5a	-	-	- Handstamped for official mail.	-	<input type="checkbox"/>
87.8.6	-	- ¹⁵	PHQ Card 1/87(a). 15c.	<input type="checkbox"/>	<input type="checkbox"/>
87.8.6a	-	-	- First day use with (1).	-	<input type="checkbox"/>
87.8.7	-	-	PHQ Card 1/87(b). 20c.	<input type="checkbox"/>	<input type="checkbox"/>
87.8.7a	-	-	- First day use with (2).	-	<input type="checkbox"/>
87.8.8	-	-	PHQ Card 1/87(c). 40c.	<input type="checkbox"/>	<input type="checkbox"/>
87.8.8a	-	-	- First day use with (3).	-	<input type="checkbox"/>
87.8.9	-	-	PHQ Card 1/87(d). \$1.	<input type="checkbox"/>	<input type="checkbox"/>
87.8.9a	-	-	- First day use with (4).	-	<input type="checkbox"/>

14 December 1987.

20th Anniversary of ASEAN.



The actual twentieth anniversary of ASEAN was 8 August 1987.

Designed by Peter Khang Howe Ket, this issue comprised two counter sheets.

Counter sheets:

The two 41mm x 30mm stamps both showed the ASEAN emblem with six elements. In addition, they showed:

20c.: Flags of the six current member nations, people and the number 20;

\$1: Flags of the members encircling a view of Earth showing South East Asia.

They were printed in sheets of 100 by Security Printers (Malaysia) using off-set lithography. Sheet markings were not recorded. The paper was phosphor-coated, giving greenish-white fluorescence and yellow-green afterglow. The Multiple SPM watermark was upright. The comb perforations measured 12.9 x 12.8.

First day facilities:

The first day cover, sold at 20c., featured "20", ASEAN emblem and members' flags.

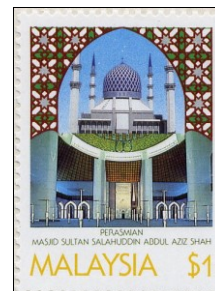
The special first day postmark included the ASEAN emblems.

No.	S.G.	I.S.C.		Mint	Used
87.9.1	387	375	20c.	<input type="checkbox"/>	<input type="checkbox"/>

No.	S.G.	I.S.C.		Mint	Used
87.9.2	388	376	\$1.	<input type="checkbox"/>	<input type="checkbox"/>
87.9.3	-	MFDC-138	First day cover (1-2).	<input type="checkbox"/>	<input type="checkbox"/>

11 March 1988.

Sultan Salahuddin Abdul Aziz Shah Mosque.



The Sultan Salahuddin Abdul Aziz Shah Selangor State Mosque (Masjid Sultan Salahuddin Abdul Aziz Shah Masjid Negeri Selangor Darulehsan), at Shah Alam in Selangor, was officially opened by the Sultan himself on 11 March 1988. This, the largest mosque in Malaysia, was built at a cost of \$160 million contemporaneously with the Sultan's Silver Jubilee.

Designed by Raja Zahabuddin bin Raja Yaacob, this issue comprised three counter sheets.

Counter sheets:

The three stamps showed:

15c.: The portico at the front of the mosque (41mm x 30mm);

20c.: The dome, minarets and Sultan Salahuddin (41mm x 30mm);

\$1: The interior and dome (30mm x 41mm).

They were printed in sheets of 50 by Security Printers (Malaysia) using off-set lithography. For the 15c., five colours (cyan, yellow, magenta, black and orange), for the 20c., seven colours (gold, cyan, yellow, magenta, black, orange and silver) and for the \$1 five colours (cyan, magenta, black, orange, silver) were used. Plate numbers 1A (x number of colours) appeared in the top and bottom rows with the first five above the first and last rows and the other two above the next stamps inboard. The SPM emblems appeared in the left and right margins adjacent to the top and bottom rows. Incomplete sheet marking information is available for the 15c. and \$1, but the arrangement was similar (the markings may appear sideways on the \$1). The paper was phosphor-coated (white fluorescence, yellow-green after-glow). The Multiple SPM watermark was upright on the \$1 and (normally) sideways reading down on the other values, but the 20c. is known sideways reading up. The comb perforations measured 11.8 x 12.1 (15c., 20c.) or 12.1 x 11.8 (\$1). The 15c. and 20c. left margins were imperforate. The 15c. top margin was perforated through. The remainder were not recorded.

First day facilities:

The first day cover, sold at 20c., featured the mosque by night.

The special first day postmark included a front elevation of the mosque. Covers exist postmarked at Shah Alam.

Withdrawal:

The issue was due to be withdrawn on 11 June 1988.

Remaindered covers were handstamped "URUSAN POS" for official correspondence, such as from Miri to Kuching between 16 May 1989 and 24 June 1989.

No.	S.G.	I.S.C.		Mint	Used
88.1.1	389	377	15c. Wmk. SD.	<input type="checkbox"/>	<input type="checkbox"/>
88.1.2	390	378	20c. Wmk. SD.	<input type="checkbox"/>	<input type="checkbox"/>
88.1.2a	390w	-	- Wmk. SU.	<input type="checkbox"/>	<input type="checkbox"/>
88.1.3	391	379	\$1. Wmk. U.	<input type="checkbox"/>	<input type="checkbox"/>
88.1.4	-	MFDC-139	First day cover (1-3).	<input type="checkbox"/>	<input type="checkbox"/>
88.1.5	-	-	- Handstamped for use on official correspondence.	<input type="checkbox"/>	<input type="checkbox"/>

4 April 1988.

Sultan Ismail Power Station Scheme.



The 900MW Sultan Ismail natural gas-fuelled combined-cycle power station at Paka, Dungun, Terengganu, was officially opened on 4 April 1988. The largest of its kind in the ASEAN region, it cost RM870 million. In this type of power station, the waste heat from the two 100MW gas turbine generator sets was used to produce steam to drive a further 100MW turbo-generator.

Designed by Azmi bin Kassim, this issue comprised two counter sheets.

Counter sheets;

The two 39mm x 28mm stamps showed

20c.: An aerial view of the power station complex;

\$1: A ground level view of the power station with pylons.

They were printed in sheets of 100 by Security Printers (Malaysia) using off-set lithography. Sheet markings were not recorded. The paper was phosphor-coated (white fluorescence, yellow-green after-glow). The Multiple SPM watermark was normally sideways reading up. The \$1 exists with watermark sideways reading down on a first day cover from Kuching. The comb perforations measured 13.2 x 12.9.

First day facilities:

The first day cover, sold at 20s., featured a close-up of the plant under construction.

The special first day postmark included electricity pylons. The "normal" postmark for this issue was Kuala Trengganu.

Some covers were postmarked 1 April 1988 in error at Tawau with the corrected date on the reverse (the only covers of this period to be date stamped on the reverse).

Withdrawal:

The issue was due to be withdrawn on 4 July 1988.

Remaindered covers are known variously handstamped for official correspondence, such as "URUSAN POS" from Mukah to Kuching on 23 July 1989 and from Sarikei to Kuching on 13 September 1989 or boxed "O.P.S." on a cover from Bintagor to Kuching on 18 July 1989.

No.	S.G.	I.S.C.		Mint	Used
88.2.1	392	380	20c. Wmk. SU.	<input type="checkbox"/>	<input type="checkbox"/>
88.2.2	393	381	\$1. Wmk. SU.	<input type="checkbox"/>	<input type="checkbox"/>
88.2.2a	393w	-	- Wmk. SD.	<input type="checkbox"/>	<input type="checkbox"/>
88.2.3	-	MFDC-140	First day cover (1, 2).	<input type="checkbox"/>	<input type="checkbox"/>
88.2.3a	-	-	- (1, 2a).	-	<input type="checkbox"/>
88.2.3a	-	-	- Dated 1Apr88 at Tawau.	-	<input type="checkbox"/>
88.2.4	-	-	- Handstamped for use on official correspondence.	-	<input type="checkbox"/>

13 April 1988.

Envelopes - Poslaju Express Mail Service.

New C4 size (229mm x 724mm - sold at RM1.50) and C5 size (162mm x 229mm - sold at RM1.20) envelopes specially for use by the Poslaju Express Mail service were issued at all offices which offered this service. Further details are not available.

No.	S.G.	I.S.C.		Mint	Used
88.3.1	-	-	C4 envelope.	<input type="checkbox"/>	<input type="checkbox"/>
88.3.2	-	-	C3 envelope.	<input type="checkbox"/>	<input type="checkbox"/>

30 June 1988.

Protected Birds (II).



Designed by Ong Soo Keat, this issue comprised two counter sheets with se-tenant pairs of stamps.

Counter sheets:

The four 28mm x 39mm designs formed two se-tenant pairs in separate sheets. In the two sheets, the designs appeared in alternating columns:

Value	English Name	Malay Name (on stamp)	Latin Name (on stamp)
20c.(A)	Black-naped Blue Monarch	Sambar Uban Hitam	<i>Hypothymis azurea</i>
20c.(B)	Scarlet-backed Flowerpecker	Sepah Puteri Merah	<i>Dicaeum cruentatum</i>
50c.(A)	Crimson Sunbird	Kelicap Sepah Raja	<i>Aethopyga siparaja</i>
50c.(B)	Black and Red Broadbill	Takau Rakit	<i>Cymbirhynchus macrorhynchos</i>

They were printed in sheets of 100 (10 x 10) by Security Printers (Malaysia) using six-colour off-set lithography (cyan, yellow, magenta, black, light brownish-grey (border colour) and brown). Sheet markings include plate number 1A (x6) at top and bottom of columns 1 and 10 and the SPM logo (x6) to the left and right of rows 1 and 10. The phosphor-coated paper gave a bluish fluorescent reaction and yellow-green after-glow under UV light. The Multiple SPM watermark was normally upright, but the 50c. exists watermark inverted and the 20c. has been so reported. The comb perforations measured 12.9 x 13.2.

First day facilities:

The first day cover, printed by Rota Envelopes and sold at 20c., featured an unidentified bird.

The special first day postmark included the yellow-backed sunbird.

No.	S.G.	I.S.C.		Mint	Used
88.4.1	394	382	20c.(A). Wmk. U.	<input type="checkbox"/>	<input type="checkbox"/>
88.4.1a	394w	-	- Wmk. I.	<input type="checkbox"/>	<input type="checkbox"/>
88.4.2	395	383	20c.(B). Wmk. U.	<input type="checkbox"/>	<input type="checkbox"/>
88.4.2a	395w	-	- Wmk. I.	<input type="checkbox"/>	<input type="checkbox"/>
88.4.3	394a	-	Se-tenant horizontal pair (1-2).	<input type="checkbox"/>	<input type="checkbox"/>
88.4.3a	394wa	-	- (1a-2a).	<input type="checkbox"/>	<input type="checkbox"/>
88.4.4	396	383	50c.(A). Wmk. U.	<input type="checkbox"/>	<input type="checkbox"/>
88.4.4a	396w	-	- Wmk. I.	<input type="checkbox"/>	<input type="checkbox"/>
88.4.5	397	384	50c.(B). Wmk. U.	<input type="checkbox"/>	<input type="checkbox"/>
88.4.5a	397w	-	- Wmk. I.	<input type="checkbox"/>	<input type="checkbox"/>
88.4.6	396a	-	Se-tenant horizontal pair (4-5).	<input type="checkbox"/>	<input type="checkbox"/>
88.4.6a	396wa	-	- (4a-5a).	<input type="checkbox"/>	<input type="checkbox"/>
88.4.7	-	MFDC-141	First day cover (3, 6).	<input type="checkbox"/>	<input type="checkbox"/>

1 August 1988.

Aerogramme - Visit Malaysia Year 1990 (I).



(illustration reduced 50%)

1990 was to be "Visit Malaysia Year", so a series of aerogramme designs were produced to lead up to the year. The first publicised Kuching.

This format B aerogramme¹⁶ was sold at 40c. and showed on its central panel the State Civic Centre, Kuching. The top panel showed a map of Malaysia and the ASEAN emblem. The bottom panel was blank. The 42mm x 27mm "stamp" had a face value of 40c. and showed a small version of the main illustration.

By an unknown printer, standard four-colour off-set lithography was used. The aerogramme measured 214mm x 320mm unfolded, 180mm x 107mm folded. It was printed on white paper with a pale blue printed overlay on the top and centre panels. The paper gave no significant reaction under UV light. There was no watermark. The "stamp" had no simulated perforation.

First day facilities:

The special first day postmark, if any, was not recorded.

No.	S.G.	I.S.C.		Mint	Used
88.5.1	-	AL6	Aerogramme.	<input type="checkbox"/>	<input type="checkbox"/>

31 August 1988.

Sabah & Sarawak Independence.



This issue was to mark the Silver Jubilees of the unilateral declaration of independence of Sabah and Sarawak from Britain.

Designed by Peter Khang Howe Ket, this issue comprised two counter sheets, one of which was composed of se-tenant pairs.

Counter sheets:

The stamps showed:

- 20c.(A): The map and products (logs being carried by a specialised forestry tractor, Cocoa crates, arc welder and oil refinery) of Sabah, together with new state crests commissioned to mark the anniversary (28mm x 38mm);
- 20c.(B): The map and products (black pepper, petrochemical works with worker in a hard hat, oil rig and helicopter) of Sarawak, together with new state crests commissioned to mark the anniversary (28mm x 38mm);
- \$1: Map of Sabah and Sarawak imposed on the flag of Malaysia, above which were the new flags and crests of the states, plus the coat of arms of Malaysia (30mm x 41mm).

The two 20c. stamps appeared in alternative columns in the sheet.

They were printed in sheets of 100 (10 x 10) by Security Printers (Malaysia) using standard four-colour off-set lithography. The only sheet markings were 1A (x4) above and below columns 1 and 10 and SPM emblems to the left and right of R1 and R10. The paper was phosphor-coated, giving a greenish fluorescence and a yellow-green after-glow. The Multiple SPM watermark was normally upright, but both values have been reported with inverted watermark. The comb perforations measured 12.9 x 13.2 with left margin imperforate and rest perforated through (20c.) or 12.8 x 12.9 (\$1).

First day facilities:

The first day cover, printed by Rota Envelopes and sold at 20c., featured the Sabah and Sarawak 25th Anniversary emblems.

The special first day postmark included a map of Sabah and Sarawak.

Withdrawal:

The issue was due to be withdrawn on 30 November 1988.

No.	S.G.	I.S.C.		Mint	Used
88.6.1	398	386	20c.(A). Wmk. U.	<input type="checkbox"/>	<input type="checkbox"/>
88.6.1a	398aw	-	- Wmk. I. ¹⁷	<input type="checkbox"/>	<input type="checkbox"/>
88.6.2	399	387	20c.(B). Wmk. U.	<input type="checkbox"/>	<input type="checkbox"/>
88.6.2a	399w	-	- Wmk. I. ¹⁷	<input type="checkbox"/>	<input type="checkbox"/>
88.6.3	398b	-	Se-tenant horizontal pair (1-2).	<input type="checkbox"/>	<input type="checkbox"/>
88.6.3a	398bw	-	- (1a-2a). ¹⁷	<input type="checkbox"/>	<input type="checkbox"/>
88.6.4	400	388	\$1. Wmk. U.	<input type="checkbox"/>	<input type="checkbox"/>
88.6.4a	400w	-	- Wmk. I. ¹⁷	<input type="checkbox"/>	<input type="checkbox"/>
88.6.5	-	MFDC-142	First day cover (3, 4).	<input type="checkbox"/>	<input type="checkbox"/>

17 December 1988.

Marine Life (I).



Designed by Kathy Wong, this issue comprised one counter sheet with a se-tenant strips of five designs plus a miniature sheet.

Counter sheets:

The se-tenant strip of five 28mm x 32mm stamps showed nudibranches (sea slugs):

20c.(A): Black-margined Nudibranch (*Glossodoris atromarginata*);

20c.(B): Ocellate Nudibranch (*Phyllidia ocellata*);

20c.(C): Un-named Nudibranch (*Chromodoris annae*);

20c.(D): Un-named Nudibranch (*Flabellina macassarana*);

20c.(E): Rüppell's Nudibranch (*Fryeria ruppelli*).

The stamps were printed in sheets of 100 (2 strips x 10). The issue was printed by Security Printers (Malaysia) using off-set lithography. Sheet markings were not recorded. The paper was phosphor-coated (greenish-white fluorescence, yellow-green after-glow). The Multiple SPM watermark was upright. The comb perforations measured 11.9. The right margin was perforated through; the other margins were not recorded.

Miniature sheet:

The 100mm x 75mm miniature sheet, showed a coral reef scene, of which part of the design formed a single 50mm x 40mm \$1 stamp showing Blue-Ringed Angelfish (*Pomacanthus annularis*). Paper was as for the counter sheets. The perforations measured 14.0 x 14.1.

First day facilities:

The first day cover, printed by Rota Envelopes and sold at 20s., featured a nudibranch.

The special first day postmark included a fish.

**Withdrawal:**

The issue was due for withdrawal on 17 June 1989, or earlier if stocks were exhausted.

No.	S.G.	I.S.C.		Mint	Used
88.7.1	401	389	20c.(A).	<input type="checkbox"/>	<input type="checkbox"/>
88.7.2	402	390	20c.(B).	<input type="checkbox"/>	<input type="checkbox"/>
88.7.3	403	391	20c.(C).	<input type="checkbox"/>	<input type="checkbox"/>
88.7.4	404	392	20c.(D).	<input type="checkbox"/>	<input type="checkbox"/>
88.7.5	405	393	20c.(E).	<input type="checkbox"/>	<input type="checkbox"/>
88.7.6	401a	MC-143	Se-tenant horizontal strip (1-5).	<input type="checkbox"/>	<input type="checkbox"/>
88.7.7	MS406	MC-143M	\$1 miniature sheet.	<input type="checkbox"/>	<input type="checkbox"/>
88.7.8	-	MFDC-143	First day cover (6).	<input type="checkbox"/>	<input type="checkbox"/>
88.7.8a	-	MFDC-143M	- (7).	-	<input type="checkbox"/>

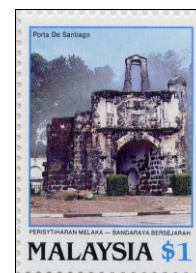
24 March 1989.

Cover - MALPEX'89.

See 1986 Definitive Issue Postal Stationery (Chapter 16).

15 April 1989.

Malacca - Historic City.



The declaration of Malacca as a "Historic City" took place on 15 April 1989, with the aim of conserving its historic structures. Malacca is recognised as being the most ancient state of Malaya and retained many buildings from the various periods in its history.

Designed by Peter Khang Howe Ket, this issue comprised three counter sheets, the two 20c. stamps coming from different sheets.

Counter sheets:

The two 20c. 38mm x 28mm stamps and single \$1 29mm x 38mm stamp showed historic buildings in Malacca City, namely:

20c.(A): The recreated Malay Sultan's Palace (Istana Kesultanan), which, by 2006, housed the Museum of Culture and History of the Melakan Empire;

20c.(B): The Proclamation of Independence Memorial Building (formerly the Malacca Club);

\$1: The Porte De Santiago gateway of the Portuguese-built A Famosa fortress, which was saved from demolition by the intervention of Sir Stamford Raffles.

They were printed in sheets of 100 by Security Printers (Malaysia) using standard four-colour off-set lithography. Plate numbers 1A (x4) and SPM emblems appeared in all four corners of the sheet. The phosphor-coated paper gave a greenish white fluorescent reaction and a yellow-green after-glow. The Multiple SPM watermark was sideways reading up on the 20c. and upright on the \$1. The comb perforations measured 13.2 x 12.9 on the 20c. and 12.9 x 13.2 on the \$1. The left margin of the 50c. was imperforate. Other margins were not recorded.

First day facilities:

This was the first issue to have a presentation pack, sold at \$2. The example seen did not have an envelope.

The first day cover, printed by Rota Envelopes and sold at 20s., featured Masjid Kampung Hulu. Built in 1728, this is the oldest functioning mosque in Malaya, built by the Dutch V.O.C. company to replace a mosque demolished during the Portuguese occupation.

The special first day postmark included a roofed two-bullock cart. The "normal" postmark was Malacca.

Withdrawal:

The issue was due to be withdrawn on 15 July 1989.

No.	S.G.	I.S.C.		Mint	Used
89.1.1	407	396	20c.(A).	<input type="checkbox"/>	<input type="checkbox"/>
89.1.2	408	395	20c.(B).	<input type="checkbox"/>	<input type="checkbox"/>
89.1.3	409	397	\$1.	<input type="checkbox"/>	<input type="checkbox"/>
89.1.4	-	MFDC-144	First day cover (1-3).	<input type="checkbox"/>	<input type="checkbox"/>
89.1.5	-	MPP-144	Presentation pack (1-3).	<input type="checkbox"/>	<input type="checkbox"/>

29 June 1989.

Marine Life (II) - Crustaceans.



Designed by Peter Khang Howe Ket, this issue comprised two counter sheets, both with se-tenant stamps and four PHQ cards.

Counter sheets:

The four 32mm x 28mm designs appeared as horizontal pairs, with the designs in alternate columns of single value sheets and showed:

20c.(A): Trapeziid Crab (*Tetralia nigrolineata*);

20c.(B): Porcelain Anemone Crab (*Neopetrolisthes maculatus*);

40c.(A): Cleaner or Anemone Shrimp (*Periclimenes holthuisi*);

40c.(B): Snapping Shrimp (*Synalpheus neomeris*).

They were printed by Security Printers (Malaysia) using standard four-colour off-set lithography. Plate numbers 1A (x4) and SPM emblems (x4) appeared in all four corners of the sheet. This issue was reported to be printed normally in sheets of 100 (10 x 10), but was also reported to have been printed in sheets of 50 due to a shortage of suitable paper. Crown Agents publicity stated that the sheet format was "50 (2 x 25)", which is taken to mean 25 pairs, not two panes of 25. The paper was phosphor-coated, giving yellow-green fluorescent reaction and after-glow (various levels of fluorescence have been noted, particularly on the 40c. with watermark sideways reading up, suggesting that at least two different batches of paper were used). The Multiple SPM watermark was normally sideways reading up, but the 20c. exists sideways reading down and both values exist with upright watermark (plus the 20c. reported inverted¹⁸). The upright watermark variety may be associated with the reported 50-set printing. It was reported that the upright watermark appeared on about 15% of used examples seen.¹⁹ The 40c. pair, watermark upright, has been seen used at Kelang, Selangor on 30 November 1989.²⁰ The comb perforations measured 11.9. Top margins were perforated through. The bottom margin was imperforate. Other margins were not recorded.

PHQ cards:

This issue was accompanied by a set of four unstamped picture postcards, each showing an enlarged version of one of the stamps on a pale green background. They were sold at 25c. each and were designated "Series 2/89".

Essays in the Public Domain:

A plain cardboard folder exists to which is attached the design for the front of the first day cover with stamp-size essays affixed of three 20c. and four 40c. designs. The four chosen designs were included, but they differed significantly from the final version. One design of each value had the Latin name omitted.

First day facilities:

The presentation pack, numbered "2", was sold at \$2.00. The envelope showed a Painted Spiny Lobster (*Panulirus versicolor*).

The first day cover, sold at 20s., featured a Painted Spiny Lobster.

The special first day postmark included a stylised crab.

No.	S.G.	I.S.C.		Mint	Used
89.2.1	410	398	20c.(A). Wmk. SU.	<input type="checkbox"/>	<input type="checkbox"/>
89.2.1a	410 bw	-	- Wmk. SD.	<input type="checkbox"/>	<input type="checkbox"/>
89.2.1b	410c	-	- Wmk. U.	<input type="checkbox"/>	<input type="checkbox"/>
89.2.1c	-	-	- Wmk. I.	<input type="checkbox"/>	<input type="checkbox"/>
89.2.2	411	399	20c.(B). Wmk. SU.	<input type="checkbox"/>	<input type="checkbox"/>
89.2.2a	411 bw	-	- Wmk. SD.	<input type="checkbox"/>	<input type="checkbox"/>
89.2.2b	411c	-	- Wmk. U.	<input type="checkbox"/>	<input type="checkbox"/>
89.2.2c	-	-	- Wmk. I.	<input type="checkbox"/>	<input type="checkbox"/>
89.2.3	410a	-	Se-tenant pair (1-2).	<input type="checkbox"/>	<input type="checkbox"/>
89.2.3a	410bwa	-	- (1a-2a).	<input type="checkbox"/>	<input type="checkbox"/>
89.2.3b	410ca	-	- (1b-2b).	<input type="checkbox"/>	<input type="checkbox"/>
89.2.3c	-	-	- (1c-2c).	<input type="checkbox"/>	<input type="checkbox"/>
89.2.4	412	400	40c.(A). Wmk. SU.	<input type="checkbox"/>	<input type="checkbox"/>
89.2.4a	412b	-	- Wmk. U.	<input type="checkbox"/>	<input type="checkbox"/>
89.2.5	413	401	40c.(B). Wmk. SU.	<input type="checkbox"/>	<input type="checkbox"/>
89.2.5a	413b	-	- Wmk. U.	<input type="checkbox"/>	<input type="checkbox"/>
89.2.6	412a	-	Se-tenant pair (4-5).	<input type="checkbox"/>	<input type="checkbox"/>
89.2.6a	412ba	-	- (4a-5a).	<input type="checkbox"/>	<input type="checkbox"/>
89.2.7	-	MFDC-145	First day cover (3, 6).	<input type="checkbox"/>	<input type="checkbox"/>
89.2.7a	-	-	- (3a, 6a).	<input type="checkbox"/>	<input type="checkbox"/>
89.2.8	-	MPP-145	Presentation pack (3b, 6a). ²¹	<input type="checkbox"/>	<input type="checkbox"/>
89.2.9	-	- ²²	PHQ card - Stamp 1.	<input type="checkbox"/>	<input type="checkbox"/>
89.2.9a	-	-	- First day postmark and stamp 1.	-	<input type="checkbox"/>
89.2.10	-	-	PHQ card - Stamp 2.	<input type="checkbox"/>	<input type="checkbox"/>
89.2.10a	-	-	- First day postmark and stamp 2.	-	<input type="checkbox"/>
89.2.11	-	-	PHQ card - Stamp 4.	<input type="checkbox"/>	<input type="checkbox"/>
89.2.11a	-	-	- First day postmark and stamp 4.	-	<input type="checkbox"/>
89.2.12	-	-	PHQ card - Stamp 5.	<input type="checkbox"/>	<input type="checkbox"/>
89.2.12a	-	-	- First day postmark and stamp 5.	-	<input type="checkbox"/>

15 July 1989.

Aerogramme - Visit Malaysia Year 1990 (II).



(illustration reduced 50%)

1990 was to be "Visit Malaysia Year", so a series of aerogramme designs were produced to lead up to the year. The second publicised the island of Sapi in Sabah.

By an uncredited designer, this aerogramme was sold at 40c. and showed Pulau Sapi, Sabah. The 42mm x 27mm "stamp" had a face value of 40c. and showed the beach, tourist boat and a bather.

By an unknown printer, standard four-colour off-set lithography was used. The aerogramme was in Format B ¹⁶, measuring 212mm x 320mm unfolded, 180mm x 107mm folded. It was printed on white paper with a light blue printed overlay on top and centre panels and flaps. The paper gave a blue fluorescent reaction under ultra-violet light. There was no watermark. The "stamp" had no simulated perforation. The design was generally as for the 1 August 1988 issue, but the centre panel showed the Visit Malaysia Year 1990 emblem and the same view as was used for the "stamp".

First day facilities:

The special first day postmark, if any, was not recorded.

No.	S.G.	I.S.C.		Mint	Used
89.3.1	-	AL7	Aerogramme.	<input type="checkbox"/>	<input type="checkbox"/>

28 July 1989.

7th National Scout Jamboree.



The seventh National Scout Jamboree took place at Teluk Batik, Manjung, Perak from 24 to 31 July 1989. (No stamps were issued for the sixth Jamboree in Pahang in 1986). The issue date has also been incorrectly recorded as 26 July 1989.

Designed by Tony Teh Ching Seng of De Art Forms Sdn. Bhd., this issue comprised three counter sheets.

Counter sheets:

The three designs showed:

10c.: A map of Malaysia and the Jamboree emblem (28mm x 38mm);

20c.: Scouts saluting and the Malaysian flag (28mm x 38mm);

80c.: Scouts around a camp fire (38mm x 28mm).

They were printed in sheets of 100 by Security Printers (Malaysia) using off-set lithography. Sheet markings were not recorded. The paper was phosphor-coated (greenish white fluorescence, yellow-green after glow). The Multiple SPM watermark was normally sideways reading up on the 10c.(sideways reading down also exists ¹⁷), sideways reading down on the 20c., and upright on the 80c.(inverted watermark has been reported). The comb perforations measured 12.9 x 13.2 (10c., 20c.) or 13.2 x 12.9 (80c.).

First day facilities:

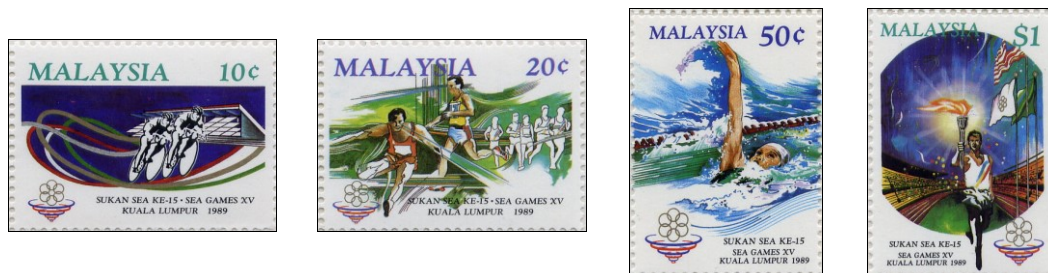
The presentation pack was sold at \$2.50. The envelope featured the Jamboree emblem.

The first day cover, sold at 20c., featured the Jamboree emblem.

The special first day postmark included the Malaysian Scout emblem.

No.	S.G.	I.S.C.		Mint	Used
89.4.1	414	402	10c. Wmk. SU.	<input type="checkbox"/>	<input type="checkbox"/>
89.4.1a	414w	-	- Wmk. SD.	<input type="checkbox"/>	<input type="checkbox"/>
89.4.2	415	403	20c. Wmk. SD.	<input type="checkbox"/>	<input type="checkbox"/>
89.4.3	416	404	80c. Wmk. U.	<input type="checkbox"/>	<input type="checkbox"/>
89.4.3a	416w	-	- Wmk. I.	<input type="checkbox"/>	<input type="checkbox"/>
89.4.4	-	MFDC-146	First day cover (1-3).	<input type="checkbox"/>	<input type="checkbox"/>
89.4.5	-	MPP-146	Presentation pack (1-3).	<input type="checkbox"/>	<input type="checkbox"/>

20 August 1989.

15th South East Asian Games.

The 15th South East Asian Games took place at Kuala Lumpur from 20 to 31 August 1989. Since the 1977 Games (see issue 77.5), Games had been held in 1979 (Jakarta), 1981 (Manila), 1983 (Singapore), 1985 (Bangkok) and 1987 (Jakarta).

Designed by Azmi bin Kassim, this issue comprised four counter sheets and four PHQ cards.

Counter sheets:

The designs showed sportsmen participating in:

10c.: Cycling (38mm x 28mm);

20c.: Athletics (38mm x 28mm);

50c.: Swimming (28mm x 38mm);

\$1: Runner carrying the Games torch (28mm x 38mm).

They were printed in sheets of 50 (2 panes, each 5 x 5) by Security Printers (Malaysia) using five-colour off-set lithography (standard plus gold). Sheet markings were 1A (x5) above and below left and right columns and SPM emblems to the left and right of top and bottom rows. The paper was phosphor-coated (greenish-white fluorescence, yellow-green after-glow). The Multiple SPM watermark was upright on the 10c. and 20c., and sideways reading down on the 50c. and \$1. The 20c. has been reported with inverted watermark.²³ The comb perforations measured 13.2 x 12.9 (10c., 20c.) or 12.9 x 13.2 (50c., \$1). The left and top margin of landscape-format sheets (top and right for portrait-format) were perforated through. The bottom (left) margin was imperforate. The right (bottom) margins are assumed to have been perforated through.

PHQ cards:

This issue was accompanied by a set of four unstamped picture postcards, each showing an enlarged version of one of the stamps on a light blue background. They were sold at 25c. each and were designated "Series 3/89".

First day facilities:

The envelope of the presentation pack, sold at \$2.50, showed a variety of sports (javelin, lawn tennis, weightlifting, rugby football, hurdling, athletics, cycling, swimming) and the Games emblem. The first day cover, sold at 20s., featured three turtles racing.

The special first day postmark included the Games mascot (a turtle) and Games emblem.

No.	S.G.	I.S.C.		Mint	Used
89.5.1	417	405	10c.	<input type="checkbox"/>	<input type="checkbox"/>
89.5.2	418	406	20c.Wmk. U.	<input type="checkbox"/>	<input type="checkbox"/>
89.5.2a	-	-	- Wmk. I.	<input type="checkbox"/>	<input type="checkbox"/>
89.5.3	419	407	50c.	<input type="checkbox"/>	<input type="checkbox"/>
89.5.4	420	408	\$1.	<input type="checkbox"/>	<input type="checkbox"/>
89.5.5	-	MFDC-147	First day cover (1-4).	<input type="checkbox"/>	<input type="checkbox"/>
89.5.6	-	MPP-147	Presentation pack (1-4).	<input type="checkbox"/>	<input type="checkbox"/>
89.5.7	-	- ²⁴	PHQ card - Stamp 1.	<input type="checkbox"/>	<input type="checkbox"/>
89.5.7a	-	-	- First day use with stamp 1.		<input type="checkbox"/>
89.5.8	-	-	PHQ card - Stamp 2.	<input type="checkbox"/>	<input type="checkbox"/>
89.5.8a	-	-	- First day use with stamp 2.		<input type="checkbox"/>
89.5.9	-	-	PHQ card - Stamp 3.	<input type="checkbox"/>	<input type="checkbox"/>
89.5.9a	-	-	- First day use with stamp 3.		<input type="checkbox"/>
89.5.10	-	-	PHQ card - Stamp 4.	<input type="checkbox"/>	<input type="checkbox"/>
89.5.10a	-	-	- First day use with stamp 4.		<input type="checkbox"/>

18 September 1989.

Installation of 9th King.



Sultan Azlan Shah of Perak was installed as the ninth King on 18 September 1989.

Designed by Raja Zahabuddin Raja Yaacob, this issue comprised three counter sheets.

Counter sheets:

The three 28mm x 38mm stamps to a common design showed a three-quarters head and shoulders portrait of the Sultan and the coat of arms of Malaysia on different coloured backgrounds.

They were printed in sheets of 100 (10 x 10) by Security Printers (Malaysia) using four-colour off-set lithography. Sheet markings included pane numbers (x4) below R10/10 and colour dots (x4) to the right of R10/10; it is assumed that similar markings appear in the other three corners. Pane number 1A exists for all values. The phosphor-coated paper gave a greenish-white fluorescent reaction and yellow-green after-glow. The Multiple SPM watermark was sideways reading down. The comb perforations measured 12.9 x 13.2.

Proof material:

Imperforate colour separation proofs of all values of this issue have come onto the market, showing the printing sequence to be black, cyan, magenta, yellow. These proofs exhibit show that, when the 40c. and \$1 were originally proofed, there was no “grey” box around Malaysia. This was later added by incorporating a screened area, with “MALAYSIA” blank, to the common black plate. Known proofs are:

- Black without Malaysia box;
- Black with Malaysia box;
- 20c. black with Malaysia box + cyan;
- 20c. black with Malaysia box + cyan + magenta;
- 20c. black with Malaysia box + cyan + magenta + yellow;
- 40c. black without Malaysia box + cyan;
- 40c. black without Malaysia box + cyan + magenta;
- 40c. black with Malaysia box + cyan + magenta + yellow;
- \$1 black without Malaysia box + cyan (unvalued, but distinguishable as there is no background colour);
- \$1 black without Malaysia box + cyan + magenta;
- \$1 black without Malaysia box + cyan + magenta + yellow.

Logically, at least five and possibly nine, more combinations should exist, but have not been seen by the author.

First day facilities:

It is believed that a presentation pack was issued (it is listed by I.S.C.) but the author has been unable to trace an example.

The first day cover, printed by Rota Envelopes and sold at 20s., featured the coat of arms of Malaysia.

The special first day postmark used at Kuala Lumpur bureau included the coat of arms of Malaysia.

Withdrawal:

The issue was due to be withdrawn on 18 December 1989.

No.	S.G.	I.S.C.		Mint	Used
89.6.1	421	409	20c.	<input type="checkbox"/>	<input type="checkbox"/>
89.6.2	422	410	40c.	<input type="checkbox"/>	<input type="checkbox"/>
89.6.3	423	411	\$1.	<input type="checkbox"/>	<input type="checkbox"/>
89.6.4	-	MFDC-148	First day cover (1-3).	<input type="checkbox"/>	<input type="checkbox"/>
89.6.5	-	MPP-148	Presentation pack (1-3).	<input type="checkbox"/>	<input type="checkbox"/>

8-21 October 1989.

Royal Visit.

Her Majesty Queen Elizabeth II and the Duke of Edinburgh made a Royal Visit to Kuala Lumpur (8-21 October), Ipoh (16 October) and Singapore (21 October). The occasion was not marked by Pos Malaysia, but the British Forces Postal Service produced a commemorative circular date stamp “VISIT OF HER MAJESTY THE QUEEN TO / SINGAPORE / (coat of arms) / 9OCT89 / BRITISH FORCES 2211 POSTAL SERVICES” and applied it to special covers carried on the Royal BAe146-CC2 aircraft ZE701 on three flights (KL to Ipoh, Ipoh - KL and KL - Singapore), then flown back to

RAF Benson, UK. Covers (BFPS reference RAF(RV)11) exist in two versions: normal (with 17p Scottish stamp) or signed by the Captain (with 22p Scottish stamp).

18 October 1989.

Commonwealth Heads of Government Meeting.



The Commonwealth Heads of Government Meeting was held at Kuala Lumpur from 18 to 24 October 1989 at the Putra World Trade Centre, Kuala Lumpur and on Pulau Langkawi. This informal meeting of forty-seven Heads of Government of Commonwealth countries, accompanied by their Foreign Ministers and other officials, was held every two years. The series of meetings began in 1971 in Singapore, followed by Ottawa, Kingston, Lusaka, Melbourne, New Delhi, Nassau and Vancouver.

Designed by Design Excelsior, this issue comprised three counter sheets.

Counter sheets:

The three stamps showedL

20c.: The Putra World Trade Centre and the Pan-Pacific Hotel, Kuala Lumpur (38mm x 28mm);

50c.: Traditional dancers (28mm x 38mm);

\$1: The Malaysian flag and a world map showing Commonwealth countries (38mm x 28mm).

They were printed in sheets of 50 by Security Printers (Malaysia) using five-colour off-set lithography (standard plus gold). 1A (x5) appears above and below the first and last columns with five SPM emblems at left and right of the top and bottom rows. The paper was phosphor-coated (yellow-green fluorescent reaction and after-glow). The Multiple SPM watermark was normally upright on the 20c. (also known inverted, sideways reading up²⁵ and sideways reading down¹⁷), sideways reading up on the 50c. (also known sideways reading down and upright) and upright on the \$1 (also known sideways reading down). The comb perforations measured 13.2 x 12.9 (20c., \$1) or 12.9 x 13.2 (50c.). The 50c. upright perforated 12.2 and \$1 sideways reading down perforated 12.2 also exist (both appeared in this form in the 1989 Yearbook). The \$1 P.12.2 was perforated through the top margin and imperforate at left. 50c. P.12.9 x 13.2 was perforated through at top. Other margins were not recorded.

First day facilities:

It is believed that a presentation pack was issued (it is listed by I.S.C.) but the author has been unable to trace an example.

The first day cover, sold at 20s. and printed by Rota Envelopes, featured the conference emblem and a padi field with water buffalo.

The special first day postmark included the conference emblem and a map of Malaysia.

Withdrawal:

The issue was intended to be withdrawn on 18 January 1990 or when stocks exhausted, whichever was earlier.

No.	S.G.	I.S.C.		Mint	Used
89.7.1	424	412	20c. Wmk. U. P.13.2 x 12.9.	<input type="checkbox"/>	<input type="checkbox"/>
89.7.1a	424aw	-	- Wmk. I. P.13.2 x 12.9.	<input type="checkbox"/>	<input type="checkbox"/>
89.7.1b	424bw	-	- Wmk. SU. P.13.2 x 12.9.	<input type="checkbox"/>	<input type="checkbox"/>
89.7.1c	424b	-	- Wmk. SD. P.13.2 x 12.9.	<input type="checkbox"/>	<input type="checkbox"/>
89.7.2	425b	-	50c. Wmk. U. P.12.9 x 13.2.	<input type="checkbox"/>	<input type="checkbox"/>
89.7.2a	425ba	-	- Wmk. U. P.12.2.	<input type="checkbox"/>	<input type="checkbox"/>
89.7.2b	425aw	413	- Wmk. SU. P.12.9 x 13.2.	<input type="checkbox"/>	<input type="checkbox"/>
89.7.2c	425	-	- Wmk. SD. P.12.9 x 13.2.	<input type="checkbox"/>	<input type="checkbox"/>
89.7.3	426	414	\$1. Wmk. U. P.13.2 x 12.9.	<input type="checkbox"/>	<input type="checkbox"/>
89.7.3a	426a	-	- Wmk. SD. P.13.2 x 12.9.	<input type="checkbox"/>	<input type="checkbox"/>
89.7.3b	426ab	-	- Wmk. SD ²⁶ . P.12.2.	<input type="checkbox"/>	<input type="checkbox"/>
89.7.4	-	MFDC-149	First day cover (1, 2b, 3).	<input type="checkbox"/>	<input type="checkbox"/>
89.7.4a	-	-	- (1a, 2b, 3).	-	<input type="checkbox"/>
89.7.4b	-	-	- (1, 2c, 3).	-	<input type="checkbox"/>
89.7.5	-	MPP-149	Presentation pack.	<input type="checkbox"/>	<input type="checkbox"/>

2 December 1989.

Non-stop MAS Service to London.



The delivery of two \$350 million (each) Boeing 747-4H6(SCD) Combi passenger/cargo jet airliners (9M-MHL *Kuala Lumpur* and 9M-MHM *Penang*) enabled the introduction by Malaysian Airline System on 2 December 1989 of a non-stop service between London and Kuala Lumpur. The 13,600km flight saved two hours on the journey.

Designed by AMC-Melewar Zecha Communications, this issue comprised two sheets, one of which had se-tenant stamps.

Counter sheets:

The 38mm x 28mm stamps all showed a Boeing 747-4H6 and the Visit Malaysia Year 1990 emblem, plus:

20c.(A): The clock towers of the Sultan Abdul Samad Building, Kuala Lumpur and the Palace of Westminster (“Big Ben”);

20c.(B): The Parliament Buildings, Kuala Lumpur, and the Palace of Westminster, London;

\$1: The route on a world map.

The two 20c. appeared in alternate columns in the sheet, forming horizontal se-tenant pairs.

They were printed in sheets of 100 by Security Printers (Malaysia) using off-set lithography. Sheet markings include plate numbers above and below the left and right columns and SPM emblems to the left and right of the top and bottom rows. The paper was phosphor-coated (greenish-white fluorescence, yellow-green after-glow). The paper bears the Multiple SPM watermark upright. The comb perforations measured 13.2 x 12.9.

Proofs:

Watermarked, but imperforate, colour-separation proofs exist. Known examples include the \$1 in cyan and black or in full colour.

First day facilities:

The presentation pack was sold at \$2.50. The envelope showed a Boeing 747-4H6 and party balloons.

The first day cover, sold at 20s., featured a Boeing 747-4H6 and party balloons.

The special first day postmark included a Boeing 747-4H6. The “normal” postmark was Kuala Lumpur International Airport.

Withdrawal:

The issue was due to be withdrawn on 2 February 1990.

No.	S.G.	I.S.C.		Mint	Used
89.8.1	427	415	20c.(A).	<input type="checkbox"/>	<input type="checkbox"/>
89.8.2	428	416	20c.(B).	<input type="checkbox"/>	<input type="checkbox"/>
89.8.3	427a	-	Se-tenant horizontal pair (1-2).	<input type="checkbox"/>	<input type="checkbox"/>
89.8.4	429	417	\$1.	<input type="checkbox"/>	<input type="checkbox"/>
89.8.5	-	MFDC-150	First day cover (1-2, 4).	<input type="checkbox"/>	<input type="checkbox"/>
89.8.6	-	MPP-150	Presentation pack (1-2, 4).	<input type="checkbox"/>	<input type="checkbox"/>

11 December 1989.

Aerogramme - Visit Malaysia Year 1990 (III).



(Illustration reduced 50%)

1990 was to be "Visit Malaysia Year", so a series of aerogramme designs were produced to lead up to the year. The third publicised was sold at 40c. and promoted Kelantan coastal resorts.

Designer and printing details were not recorded. Standard four-colour off-set lithography was used. The aerogramme was Format B with rounded tabs, measuring 321mm x 213mm unfolded, 180mm x 107mm folded. It was printed on unwatermarked white paper with a very pale blue overlay on front and back panels. The 42mm x 27mm, imperforate "stamp" had a face value of 40c. The paper and stamp gave no ultra-violet reaction.

The airmail label had been redrawn as a rectangle 56mm x 19mm in dull violet-blue containing in white "SURAT UDARA / MEL (dove with speed lines) PAR / UDARA AVION / AEROGRAMME". The ASEAN emblem, letters and circle were in black on a fluorescent orange background to the left of the airmail label. Below was Malaysia in black above a map of South East Asia in grey with Malaysia picked out in white. The map was superimposed on the prow of a canoe. To the right were five lines for the name and address.

The back panel contains three lines for the sender's name and address above a large panel showing a traditional fishing boat on Dasar Beach, Sabak, Kelantan, with to the right the Visit Malaysia Year 1990 emblem incorporating a picture of the Sultan Abdul Hamad Building, Kuala Lumpur. Above the illustration were "PANTAI DASAR, SABAK, KELANTAN" at left and "DASAR BEACH, SABAK, KELANTAN" at right.

The bottom panel was blank and there was no printer's inscription.

First day facilities:

The special first day postmark, if any, was not recorded.

No.	S.G.	I.S.C.		Mint	Used
89.9.1	-	AL8	Aerogramme.	<input type="checkbox"/>	<input type="checkbox"/>

28 December 1989.

National Park.



The fiftieth anniversary of the Taman Negara National Park was celebrated in 1989. The 1300 km² nucleus of this, the first National Park in Malaysia, was established by Pahang in 1925 around Jerantut as the "Gunung Tahan Game Reserve". The present 4343 km² park in Kelantan, Pahang and Trengganu was established in 1935 jointly by the Sultans of those states as the "King George V National Park" to mark the Silver Jubilee of King George V but it was 1938 before the necessary legislation could be enacted. It was renamed "Taman Negara" after independence.

Designed by Jermaine, this issue comprised two counter sheets.

Counter sheets:

The two 28mm x 38mm designs both bore the "Visit Malaysia Year 1990" emblem and showed:

20c.: A white monkey and a map of the National Park;

\$1: A pair of Crested Argus Pheasants (*Rheinartia ocellata nigrescens*).

They were printed in sheets of 100 by Security Printers (Malaysia) using standard four-colour off-set lithography. The SPM emblem appears (x4) to the left and right of the top and bottom rows and 1A (x4) appears above and below the left and right columns. The paper was phosphor-coated (green-white fluorescence, yellow-green after-glow). The Multiple SPM watermark was upright. The comb perforations normally measured 12.2 on the 20c. and 12.9 x 13.2 on the \$1, but both exist perforated 14.3. This was first use of the 14.3 perforator. The 20c. P.12.2 had the bottom margin imperforate with the left margin perforated through. The \$1 P.12.9 x 13.2 had the left margin imperforate with the bottom margin perforated through. Other margins were not recorded.

First day facilities:

The presentation pack was sold at \$2.50. The envelope showed a map of the Park and an eagle (*Haliaeetus leucogaster?*).

The first day cover, sold at 20c. and printed by Rota Envelopes, featured mouse deer (*Tragulus javanicus*).

The special first day postmark included tree trunks and the Visit Malaysia Year 1990 emblem. The "normal" postmark was Kuantan, Pahang.

Withdrawal:

The issue was due to be withdrawn on 28 June 1990 or when stocks were exhausted, whichever came first.

No.	S.G.	I.S.C.		Mint	Used
89.10.1	430	-	20c. P.12.2.	<input type="checkbox"/>	<input type="checkbox"/>

No.	S.G.	I.S.C.		Mint	Used
89.10.1a	430a	418	- P.14.3.	<input type="checkbox"/>	<input type="checkbox"/>
89.10.2	431	-	\$1. P.12.9 x 13.2.	<input type="checkbox"/>	<input type="checkbox"/>
89.10.2a	431a	419	- P.14.3.	<input type="checkbox"/>	<input type="checkbox"/>
89.10.3	-	MFDC-151	First day cover (1a, 2a).	<input type="checkbox"/>	<input type="checkbox"/>
89.10.4	-	MPP-151	Presentation pack (1a, 2a).	<input type="checkbox"/>	<input type="checkbox"/>

NOTES

- 1 Reported by Mr. N.G. McClaren in TMP 47/32.
- 2 Illustrated in PSM 16/3/11.
- 3 Produced by Mr. Khor Seow Loon. Illustrated in PSM 16/3/12.
- 4 However, examination under some conditions has shown possible evidence of a faint and irregular version of the SPM watermark, but it is not consistently visible. It is possible that some of the paper used for this issue may have formed part of an experimental batch of paper which preceded the production version of the SPM watermark paper later used.
- 5 This company has traded since 1992 as Royal Selangor International.
- 6 Illustrated in PSM 17/1/8.
- 7 Preferred Latin name now *Polyplectron malaccense*.
- 8 ISC lists both perforations for both values, but the author has been unable to confirm the existence of the second perforation on the 20c.
- 9 Included in MC-123 above.
- 10 Meter marks found with postmarks usually indicate that the mail was delivered to the Post Office later than the date shown on the meter mark. This is the practice in a number of countries including the UK and it is believed that Malaysia followed the same practice.
- 11 ISC listed this issue as watermark upright, but this is assumed to be an error.
- 12 Official publicity stated 100 stamps per sheet.
- 13 Shown incorrectly in S.G. 2017 catalogue.
- 14 The nomenclature of cats has been extensively revised in recent years as a result of DNA studies. See Index 4 for latest Latin names.
- 15 ISC listed the set of cards as MX1.
- 16 For aerogramme formats, see Section 10 of Chapter 3 in Volume 1.
- 17 Reported by Mr. M. Case.
- 18 Reported by Mr. P. Treadwell.
- 19 Reported by Mr. A. Bones in correspondence with the Stanley Gibbons Catalogue Editor, Mr. D.J. Aggersberg.
- 20 Reported by Mr. P. Setchell.
- 21 Reported by Mr. M. Kingsland.
- 22 ISC listed the set of cards as MX2.
- 23 Reported by Mr. P. Treadwell.
- 24 ISC listed the set of cards as MX3.
- 25 Reported via Mr. D.J. Aggersberg by Mr. A. Bones, who reported the sideways reading up to be more common than the upright in his experience, but this was not the case in stocks received by UK dealers.
- 26 Shown in error in S.G. catalogue as SU.