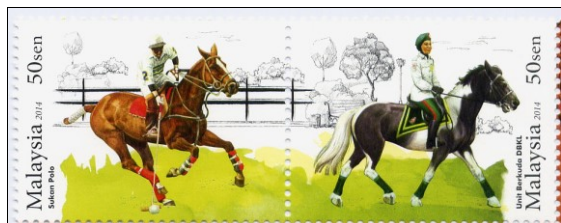


CHAPTER FIFTY-SIX
2014 SPECIAL ISSUES

Note: All illustrations in this chapter are reduced by 10% (50% for sheetlets and stationery), unless otherwise stated.

27 January 2014.

Horses.



This issue marked the Chinese Year of the Horse. Polo was first played in Persia some 2500 year ago and Selangor Polo Club was formed at Port Swettenham in 1902. Mounted Police was introduced in 1882 in Perak by Captain R S F Walker, Deputy Commissioner. Kuala Lumpur City Hall Mounted Police Unit was formed on 1 February 1989. The Mounted Ceremonial Squadron was formed on 13 May 1997.

Designed by Hazel Design, this issue comprised two counter sheets, both with se-tenant stamps.

Counter sheets:



The 40mm x 30mm counter sheet stamps showed:

50s.(A): Polo Horse;

50s.(B): Kuala Lumpur City Hall (Dewan Bandaraya Kuala Lumpur - DBKL) Mounted Unit Police Horse;

80s.(A): Royal Mounted Police (Polis Diraja Malaysia - PDRM) Horse;

80s.(B): Mounted Ceremonial Squadron, Royal Armoured Corps (KAD).

They were printed in sheets of 20 (6 x 4, with central block of four replaced by a label) by Cartor using standard four-colour off-set lithography. 700,000 50s. and 200,000 80s. stamps were printed.¹ Sheet markings were Cartor colour rectangles to the left and right of R1 and R4, 1A (x4) above and below columns 1 and 6, issue title and Pos emblem in central label. The phosphor-coated paper gave a greenish-white fluorescent reaction and a yellow-green after-glow under ultra-violet light. The paper had no watermark. The comb perforations measured 13.0 x 13.4. Top and side margins were imperforate; the bottom margin was perforated through except between columns 4 and 5 (both values).

Miniature sheets:

The RM3 and RM5 100mm x 70mm miniature sheets featured show jumping on the 40mm x 30mm stamp. 30,000 of each sheet were printed. The RM5 had gold background, instead of white, and spot varnish over the main elements of the design and text. The paper and perforation were as for the counter sheets.

**First day facilities:**

The first day cover, sold at 50s., featured a horse on a red scroll. 50,000 were printed.

The special first day postmark included a stylised horse.

The folder was sold at RM6. 2000 were printed.



No.	S.G.	I.S.C.	Mint	Used
14.1.1	1999	- 50s.(A).	<input type="checkbox"/>	<input type="checkbox"/>
14.1.2	2000	- 50s.(B)	<input type="checkbox"/>	<input type="checkbox"/>
14.1.3	1999a	- 50s.se-tenant pair (1-2)	<input type="checkbox"/>	<input type="checkbox"/>
14.1.4	2001	- 80s.(A)	<input type="checkbox"/>	<input type="checkbox"/>
14.1.5	2002	- 80s.(B)	<input type="checkbox"/>	<input type="checkbox"/>
14.1.6	2001a	- 80s.se-tenant pair (1-2)	<input type="checkbox"/>	<input type="checkbox"/>
14.1.7	MS2003	- RM3 miniature sheet.	<input type="checkbox"/>	<input type="checkbox"/>
14.1.8	MS2004	- RM5 miniature sheet.	<input type="checkbox"/>	<input type="checkbox"/>
14.1.9	-	- First day cover (3, 6).	<input type="checkbox"/>	<input type="checkbox"/>
14.1.10	-	- (7).	-	<input type="checkbox"/>
14.1.11	-	- (8).	-	<input type="checkbox"/>

14 February 2014.

Roses (II).



What better subject for St. Valentine's Day than roses?

Designed by Reign Associates, this issue comprised three counter sheets and a miniature sheet.

Counter sheets:

The 35mm square counter sheet stamps showed:

60s: White Hybrid Tea Rose;

70s.: Yellow Grandiflora Rose

RM1.20: Pink English Rose.

They were printed in sheets of 20 (5 x 4) by Cartor using standard four-colour off-set lithography. 350,000 60s., 120,000 70s. and 120,000 RM1.20 stamps were printed. Sheet markings were issue title in top margin, colour bars (x4) inscribed Cartor to left and right of R1 and R4, colour dots (x4) above and below columns 1 and 5, Pos emblem below R4/3. The unwatermarked, phosphor-coated paper gave a greenish-white fluorescent reaction and a yellow-green after-glow under ultra-violet light. The comb perforations measured 13.3 with imperforate top and bottom margins; the left and right being perforated through.

Miniature sheet:

The 80mm square miniature sheet contained a 53mm x 50mm heart-shaped stamp with a matt overprint containing a strong rose fragrance. It showed a red Hybrid Tea Rose surrounded by other rose types. 40,000 were printed. The paper was as for counter sheets. The heart-shaped perforator was nominally 13.3.



First day facilities:

The first day cover, sold at 50s., featured a mixed rose bouquet. 40,000 were printed.

The special first day postmark included a rose.

The folder was sold at RM6. 2000 were printed.

No.	S.G.	I.S.C.		Mint	Used
14.2.1	2005	-	60s.	<input type="checkbox"/>	<input type="checkbox"/>
14.2.2	2006	-	80s.	<input type="checkbox"/>	<input type="checkbox"/>
14.2.3	2007	-	RM1.20.	<input type="checkbox"/>	<input type="checkbox"/>
14.2.4	MS2008	-	RM5 miniature sheet.	<input type="checkbox"/>	<input type="checkbox"/>
14.2.5	-	-	First day cover (1-3).	<input type="checkbox"/>	<input type="checkbox"/>
14.2.6	-	-	- (4).	<input type="checkbox"/>	<input type="checkbox"/>

13 March 2014.

Museums and Artefacts (II) – Revealing of the Hidden Treasures.

The August 2013 issue was reissued without the photochromic ink covering over the artefact at the right. The date on the stamps was also changed from “2013” to “2014”. (See issue 13.11 for details)

26 April 2014.

Envelope - Visit of U.S. President.



A 190mm x 109mm postal stationery envelope was produced to mark the visit of President Barack Obama of the U.S.A. to Malaysia on 26-27 April 2014. It bore a 70mm x 35mm RM2 PPI showing the Perdana Putra, Putrajaya and the cover showed him shaking hands with Malaysian Prime Minister Najib Razak. 37,000 were printed.

First day facilities:

My example supplied by the Bureau was precancelled with a special postmark showing a handshake. Uncancelled examples are known. ²

No.	S.G.	I.S.C.	Mint	Used	
14.3.1	-	-	Envelope	<input type="checkbox"/>	<input type="checkbox"/>
14.3.2	-	-	- First day postmark.	-	<input type="checkbox"/>

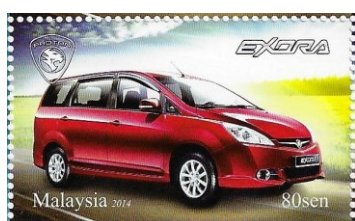
24 May 2014

City of Museums – Malacca and Jogja.

See issue 12.16.

Unissued [27 May 2014].

Malaysian-built Cars.



Planned for issue on 27 May 2014 as part of the series of issues promoting the Malaysian car industry, examples of this aborted issue came on the market in Malaysia in 2020. The reason for its cancellation is unknown.

Designed by an unknown artist, this issue comprised four counter sheets and a miniature sheet.

Counter sheets:

The 50mm x 30mm counter sheet stamps showed:

60s.: Proton Prevé;

70s.: Proton Persona;

80s.: Proton Exora;

90s.: Proton Suprima.

They were printed in sheets of (20?) by Cartor using standard four-colour offset lithography. Sheet markings included pane numbers (1A seen for all values) to the left of the top and bottom rows and colour Cartor emblems above and below column 1. The unwatermarked, phosphor-coated paper gave a greenish-white fluorescent reaction and a yellow-green after-glow under ultra-violet light. The comb perforations measured 14.0; the left, top and bottom margins were perforated through (right not seen).

Miniature sheet:

The 100mm x 80mm miniature sheet had two RM2.50 stamps showing (A) Proton Inspira or (B) Proton Satria Neo. Details were as for the counter sheets.

First day facilities:

Not issued.



No.	S.G.	I.S.C.	Mint	Used	
14.4.1	-	-	60s.	<input type="checkbox"/>	-
14.4.2	-	-	70s.	<input type="checkbox"/>	-
14.4.3	-	-	80s.	<input type="checkbox"/>	-
14.4.4	-	-	90s.	<input type="checkbox"/>	-
14.4.5	-	-	Miniature sheet.	<input type="checkbox"/>	-

27 May 2014.

Bandung Stamp Exhibition.

See issue 13.22.

31 May 2014.

Envelope – 40th Anniversary of Diplomatic Relations with China.



A 190mm x 109mm postal stationery envelope was produced to mark the fortieth anniversary of Tun Razak’s visit to Beijing in 1974 that established diplomatic relations. Both countries have designated 2014 as “Year of Friendly Exchanges”. The designer was not revealed. It bore a 71mm x 35mm RM1.40 PPI showing the Perdana Putra, Putrajaya and the Great Hall of the People, Beijing, with the respective flags and the cover showed the Malaysian Prime Minister Najib Razak shaking hands with President Hu Jintao of China. 25,000 were printed. It was sold at RM1.90.

First day facilities:

My “mint” example was precancelled with a special postmark showing 40”. It has not been confirmed whether uncanceled examples exist. 2000 folders were printed and sold at RM6.

No.	S.G.	I.S.C.		Mint	Used
14.5.1	-	-	Envelope	<input type="checkbox"/>	<input type="checkbox"/>
14.5.2	-	-	- First day postmark.	-	<input type="checkbox"/>

18 June 2014.

World Scout Bureau.



This was a late addition to the programme. The World Scout Bureau is the secretariat of the worldwide Scout Movement. In September 2013, the World Scout Committee decided to open, in Kuala Lumpur, an eighth office (the others are Nairobi, Cairo, Manila, Kiev, Geneva, Brussels and Panama City), which became operational on the seventeenth floor of the Sentral Vista building in Brickfields in May 2014. Many global services were transferred from Geneva. It was formally opened on 18 June.

Designed by Kenon Media, this issue comprised three counter sheets.

Counter sheets:

The 50mm x 30mm counter sheet stamps showed:

30s.: Office foyer, plus world Scout emblem.

50s.: Aerial view of scouts forming the Scout badge, plus world and Malaysian Scout emblems;

60s.: Sentral Vista building, Sultan Abdul Samad Building clock tower, KL Tower and Petronas Twin Towers, plus world and Malaysian Scout emblems.

They were printed in sheets of 20 (4 x5) by Percetakan Keselamatan Nasional using standard four-colour off-set lithography. 250,000 of each stamp were printed. Sheet markings were issue title in top margin, 1A (x4) to left of R1/1 and right of R5/4, colour dots to right of R1/4 and left of R5/1, Pos emblem in centre of bottom margin. The phosphor-coated paper gave a greenish-white fluorescent reaction and a yellow-green after-glow under ultra-violet light. The paper had watermark Multiple SPM sideways reading down. The comb perforations measured 13.7 x 13.5; the top margin being imperforate and the rest perforated through.

First day facilities:

The first day cover, sold at 50s., featured Sentral Vista building. 40,000 were printed.

The special first day postmark included the Scout emblem.

The folder was sold at RM6. 3500 were printed.

Setemku sheet:

A generic sheet of ten Setemku 60s stamps was also issued (see issue 14S.1 in the Setemku Chapter 71).

No.	S.G.	I.S.C.	Mint	Used
14.6.1	2020	- 30s.	<input type="checkbox"/>	<input type="checkbox"/>
14.6.2	2021	- 50s.	<input type="checkbox"/>	<input type="checkbox"/>
14.6.3	2022	- 60s.	<input type="checkbox"/>	<input type="checkbox"/>
14.6.4	-	- First day cover (1-3).	<input type="checkbox"/>	<input type="checkbox"/>

24 June 2014.**KLIA2.**

Scheduled for 2 May, opening of the second terminal at Kuala Lumpur International Airport, primarily intended as a hub for low-cost carriers, was deferred to 9 June, then 24 June, and with it the stamp issue.

Designed by Malaysia Airports, this issue comprised two counter sheets, each of two panes with different stamps in the upper and lower panes, and a miniature sheet.

**Counter sheets:**

The 30mm x 50mm counter sheet stamps showed:

80s.(A): Main Terminal Building (sheet A, upper pane);

80s.(B): Gateway@KLIA2 (Express Rail Link/taxi/bus station) (sheet A, lower pane);

80s.(C): Skybridge linking main terminal and satellite (sheet B, upper pane);

80s.(D): Departure Hall (sheet B, lower pane).

They were printed in sheets of 20 (two panes, 5x 2) by Southern Colour Print using standard four-colour off-set lithography. 240,000 of each stamp were printed. Sheet markings were issue title and Malaysia Airports emblem on a runway across the central horizontal gutter, pane number (x4) above R1/1 and below R4/5 (Sheet A 1B and sheet B 1C seen), colour dots (x4) above R1/5 and below R4/1, Pos emblem below R4/3. The unwatermarked phosphor-coated security stamp paper gave a greenish-white fluorescent reaction and a yellow-green after-glow under ultra-violet light. The comb perforations measured 14.0 x 14.4; all margins being perforated through.

Miniature sheet:

The 100mm x 60mm miniature sheet showed an overall view of the airport and contained a 50mm x 30mm RM5 stamp centred on the main building. 40,000 sheets were printed. Paper and perforation were as for the counter sheets.

First day facilities:

The first day cover, sold at 50s., featured the main terminal building and control tower. 50,000 were printed.

The special first day postmark included the issue title and umbrellas.

The folder was sold at RM6. 2600 were printed.



No.	S.G.	I.S.C.		Mint	Used
14.7.1	2023	-	80s.(A).	<input type="checkbox"/>	<input type="checkbox"/>
14.7.2	2025	-	80s.(B).	<input type="checkbox"/>	<input type="checkbox"/>
14.7.3	2023a	-	Gutter pair (1-2)	<input type="checkbox"/>	<input type="checkbox"/>
14.7.4	2024	-	80s.(C).	<input type="checkbox"/>	<input type="checkbox"/>
14.7.5	2026	-	80s.(D).	<input type="checkbox"/>	<input type="checkbox"/>
14.7.6	2025a ³	-	Gutter pair (4-5)	<input type="checkbox"/>	<input type="checkbox"/>
14.7.7	MS2027	-	RM5 miniature sheet.	<input type="checkbox"/>	<input type="checkbox"/>
14.7.8	-	-	First day cover (1-2, 4-5).	<input type="checkbox"/>	<input type="checkbox"/>
14.7.9	-	-	- (7).	-	<input type="checkbox"/>

17 July 2014.

Malaysian Fruits.



Originally scheduled for 29 April, this issue was postponed to 26 May and eventually emerged on 17 July.

Designed by Reign Associates, this issue comprised four counter sheets.

Counter sheets:

The 35mm square counter sheet stamps showed:

60s.: Jackfruit (Nangka, *Artocarpus heterophyllus* Lam).

80s.: Durian (Durian, *Durio zibethinus* murr).

RM1.20: Honeydew Melon (Tembikai wangi, *Cucumis melo*).

RM1.40: Starfruit (Belimbing, *Averrhoa carambola*).

They were printed in sheets of 20 (format as issue 14.1) by Percetakan Keselamatan Nasional using standard four-colour off-set lithography. 250,000 60s. and 120,000 of each of the other values were printed. Sheet markings were issue title in central label, 1A (x4) to left of R1/1 and right of R4/6, colour dots (x4) to right of R1/6 and left of R4/1, fruit names in all four margins in English, Bahasa Malaysia and Latin (relative positions changed between values). The phosphor-coated paper gave a greenish-white fluorescent reaction and a yellow-green after-glow under ultra-violet light. The paper had watermark Multiple SPM upright. The comb perforations measured 13.2; all margins being perforated through.

First day facilities:

The first day cover, sold at 50s., featured a medley of the fruits. 35,000 were printed.

The special first day postmark included a mangosteen.

The folder was sold at RM6. 2000 were printed.

No.	S.G.	I.S.C.		Mint	Used
14.8.1	2028	-	60s.	<input type="checkbox"/>	<input type="checkbox"/>
14.8.2	2029	-	80s.	<input type="checkbox"/>	<input type="checkbox"/>
14.8.3	2030	-	RM1.20.	<input type="checkbox"/>	<input type="checkbox"/>
14.8.4	2031	-	RM1.40.	<input type="checkbox"/>	<input type="checkbox"/>
14.8.5	-	-	First day cover (1-4).	<input type="checkbox"/>	<input type="checkbox"/>

31 August 2014.

57th Anniversary of Independence.



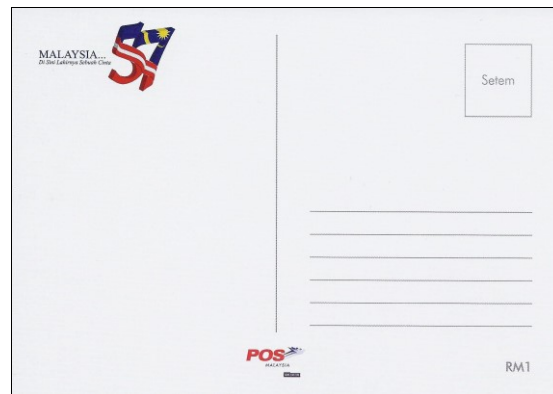
This was a late addition to the programme. Although the Bureau issue date was 31 August, the GPO counters did not put this issue on sale until 2 September and post offices 8 September.

Designed by Hazel Design, this issue comprised a single counter sheet and an unstamped postcard.

Counter sheets:

The 50mm x 30mm 60s. counter sheet stamp showed the Malaysian flag and hand holding a baby's hand, the National Monument, newspaper and crowd.

They were printed in sheets of 20 (4 x 5) by Percetakan Keselamatan Nasional using standard four-colour off-set lithography. 250,000 stamps were printed. Sheet markings were issue title and Pos emblem in bottom margin, 1A (x4) to left of R1/1 and right of R5/4, colour "57"s to right of R1/4 and left of R5/1. The phosphor-coated paper gave a greenish-white fluorescent reaction and a yellow-green after-glow under ultra-violet light. The paper had watermark Multiple SPM sideways reading up. The comb perforations measured 13.6 x 13.4, the top margin being imperforate and the rest perforated through.

Unstamped Postcard:

The 146mm x 104mm unstamped postcard shares the stamp design. 5000 were printed. It was sold for RM1.

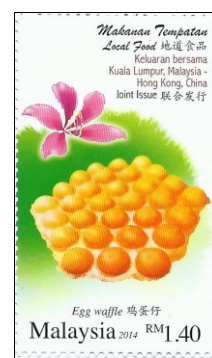
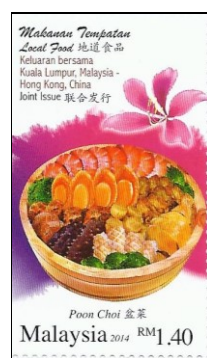
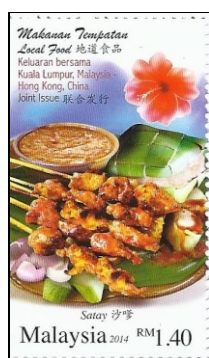
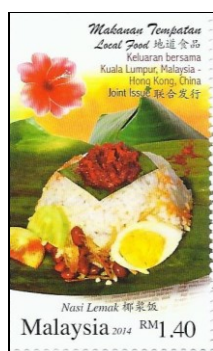
First day facilities:

The first day cover, sold at 50s., featured the 1957 Independence stamp. 40,000 were printed.

The special first day postmark included "57".

The folder was sold at RM6. 2500 were printed.

No.	S.G.	I.S.C.		Mint	Used
14.9.1	2032	-	60s.	<input type="checkbox"/>	<input type="checkbox"/>
14.9.2	-	-	First day cover (1).	<input type="checkbox"/>	<input type="checkbox"/>
14.9.3	-	-	Postcard.	<input type="checkbox"/>	<input type="checkbox"/>
14.9.4	-	-	- Used on first day.	-	<input type="checkbox"/>

9 October 2014.**World Post Day - Joint Issue with Hong Kong – Local Food.**

Originally planned for 16 October, the bureau release date was pulled-ahead to replace a planned issue for World Post Day, but post offices did not put them on sale until 17 October.

Designed by Reign Associates for Malaysia and Ms. Choi Ka-ching for Hong Kong, this issue comprised two counter sheets, one for each country, with one pane of each design, and a miniature sheet.

Counter sheets:

The 30mm x 50mm counter sheet stamps showed:

RM1.40 (A): Nasi Lemak and Hibiscus (Malaysia) (sheet A, top pane);

RM1.40 (B): Satay and Hibiscus (Malaysia) (sheet A, bottom pane);

RM1.40 (C): Poon Choi and Bauhinia (Hong Kong) (sheet B, top pane);

RM1.40 (D): Egg Waffle and Bauhinia (Hong Kong) (sheet B, bottom pane).

They were printed in sheets of 20 (two panes 5 x 2 with horizontal central gutter) by Cartor using standard four-colour off-set lithography. 200,000 of each design were printed. Sheet markings were colour dots (x4) above R1/1 and R1/5 and below R4/1 and R4/5, pane numbers (1A, 1B seen) to left and right of R1 and R4, issue title in central gutter, Pos emblem below R4/3. The unwatermarked, phosphor-coated security stamp paper gave a greenish-white fluorescent reaction and a yellow-green after-glow under ultra-violet light. The comb perforations measured 14.1; all margins being perforated through.

Miniature sheet:

The 91mm x 170mm RM5.60 miniature sheet contained the same stamps in pairs, Malaysia at the top and Hong Kong below. 40,000 were printed. Paper and perforation were as for the counter sheets.

First day facilities:

The first day cover, sold at 50s., featured a plate of hors-d'oeuvres. The miniature sheet fdc was not supplied on first day cover to account holders (The Hong Kong cover was supplied instead). 40,000 were printed.

The special first day postmark included a dish, fork, spoon and chopsticks.

The folder was sold at RM6. 2000 were printed.



No.	S.G.	I.S.C.		Mint	Used
14.10.1	2033	-	RM1.40 (A).	<input type="checkbox"/>	<input type="checkbox"/>
14.10.2	2034	-	RM1.40 (B).	<input type="checkbox"/>	<input type="checkbox"/>
14.10.3	2036	-	RM1.40 (C).	<input type="checkbox"/>	<input type="checkbox"/>
14.10.4	2035	-	RM1.40 (D).	<input type="checkbox"/>	<input type="checkbox"/>
14.10.5	MS2037	-	Miniature sheet (1-4).	<input type="checkbox"/>	<input type="checkbox"/>
14.10.6	-	-	First day cover (1-4).	-	<input type="checkbox"/>

27 October 2014.

Malay Folk Stories.



As in so many legends, these characters are probably historical figures, around which stories were woven to ensure that their fame was handed down to future generations. Planned for 25 June, this was rescheduled to 15 August, then 15 September, before settling on this final date.

Designed by Hazel Design, this issue comprised three counter sheets with se-tenant pairs of stamps.

Counter sheets:

The 40mm x 30mm counter sheet stamps showed:

60s.(A): Hang Tuah (15th Century Malaccan Sultanate warrior and admiral);

60s.(B): Tun Teja (Malaccan Sultana);

60s.(C): Mahsuri (Langkawi princess);

60s.(D): Merong Maha Wangsa (Founder of Kedah Sultanate, said to be descended from Alexander the Great);

60s.(E): Tun Kudu (Malaccan princess);

60s.(F): Tun Fatimah (Malaccan warrior princess).

They were printed in sheets of 20 (two panes (pair x 5) with vertical illustrated central gutter) by Percetakan Keselamatan Nasional using standard four-colour off-set lithography. 240,000 of each design were printed. Sheet markings were issue title and Pos emblem in central gutter, 1A (x4) to left of R1/1 and right of R5/4, colours dots (x4) to right of R1/4 and left of R5/1. The phosphor-coated paper gave a greenish-white fluorescent reaction and a yellow-green after-glow under ultra-violet light. The paper had watermark Multiple SPM upright. The comb perforations measured 13.6 x 13.4; all margins being perforated through.

First day facilities:

The first day cover, sold at 50s., featured books. 35,000 were printed.

The special first day postmark included a quill and scroll.

The folder was sold at RM6. 2000 were printed.

No.	S.G.	I.S.C.		Mint	Used
14.11.1	2038	-	60s.(A).	<input type="checkbox"/>	<input type="checkbox"/>
14.11.2	2039	-	60s.(B).	<input type="checkbox"/>	<input type="checkbox"/>
14.11.3	2038a	-	Se-tenant pair (1-2).	<input type="checkbox"/>	<input type="checkbox"/>
14.11.4	2040	-	60s.(C).	<input type="checkbox"/>	<input type="checkbox"/>
14.11.5	2041	-	60s.(D).	<input type="checkbox"/>	<input type="checkbox"/>
14.11.6	2040a	-	Se-tenant pair (4-5).	<input type="checkbox"/>	<input type="checkbox"/>
14.11.7	2042	-	60s.(E).	<input type="checkbox"/>	<input type="checkbox"/>
14.11.8	2043	-	60s.(D).	<input type="checkbox"/>	<input type="checkbox"/>
14.11.9	2042a	-	Se-tenant pair (7-8).	<input type="checkbox"/>	<input type="checkbox"/>
14.11.10	-	-	First day cover (3,6,9).	-	<input type="checkbox"/>

5 November 2014.

World Youth Stamp Exhibition (I).



The World Youth Stamp Exhibition 2014 was organised by PSM and held from 1-6 December 2014 at the Kuala Lumpur Convention Centre. This miniature sheet was an added starter and was to be the first of seven.

Miniature sheet:

Designed by Reign Associates, this issue comprised a single miniature sheet.

The 100mm x 80mm miniature sheet containing a single 80mm x 50mm RM5 stamp showed the Convention Centre by night. It was originally intended to have the event emblem on the stamp at the bottom left above the text. After publicity materials had been produced, it was moved to the top left of the stamp.

They were printed by Percetakan Keselamatan Nasional using [standard four-colour] off-set lithography. 30,000 were printed. The building was emphasised by a overlay giving both a photo-chromatic and speckled holographic effect. The phosphor-coated paper gave a greenish-white fluorescent reaction and a yellow-green after-glow under ultra-violet light. The paper had watermark Multiple SPM sideways reading down. The perforations measured 14.1.

First day facilities:

The first day cover, sold at 50s., featured the event emblem. 20,000 were printed.

The special first day postmark included the event emblem.

There was no folder.

No.	S.G.	I.S.C.		Mint	Used
14.12.1	MS2044	-	RM5 Miniature sheet.	<input type="checkbox"/>	<input type="checkbox"/>
14.12.2	-	-	First day cover (1).	<input type="checkbox"/>	<input type="checkbox"/>

1 December 2014.

The Baba & Nyonya Heritage (II)

See issue 13.19.

1-6 December 2014.

World Youth Stamp Exhibition (II).

Designed by Reign Associates (except sheet F) or Hazel Design (F), this issue comprised seven miniature sheets.

Miniature sheets:

The 100mm x 80mm (Sheet E: 110mm x 90mm) miniature sheets showed:

1 December 2014: M/s (A):

Sultan Abdul Samad building: 30mm x 50mm RM5(A), main design in bronze, watermark inverted, perf. 13.4 x 13.6. 30,000 were printed. This has also been reported with upright watermark ⁴;



2 December 2014: M/s (B):

160 Years of Malaysian Stamps: 50mm x 30mm RM3(A), watermark sideways reading up, perf. 13.6 x 13.4. 30,000 were printed;



2 December 2014: M/s (C):

160 Years of Malaysian Stamps: 40mm x 60mm 4A and two 2A Indian stamps (RM1(A)) and 40mm x 30mm Half and One Anna stamps (RM2(A)), watermark inverted, perf. 13.6 x 13.4. 30,000 were printed.

Variety: v1: The sheet is known with the left-most vertical closing line of perforations displaced 2-3 perforations to the left; ⁵

**3 December 2014 M/s (D):**

Fauna: 50mm x 30mm Orang-utan (*Pongo pygmaeus*) (RM2(B)) and (inset) 50mm x 30mm Malayan Tiger (*Panthera tigris jacksoni*) (RM3(B)), Orang-utan detailed in gold, watermark sideways reading up, perf. 13.6 x 13.4. 30,000 were printed;

**4 December 2014: M/s (E):**

Flora: 30mm x 50mm Hibiscus (*Hibiscus rosasinensis*) (RM2(C)) and 60mm x 50mm Rafflesia (*Rafflesia arnoldii* - the largest single flower on earth) (RM3(C)), holographic overlay as November issue on both stamps, watermark upright, perf. 13.6 (top) / 13.4 bottom x 13.6 (RM2) or 13.4+14.1 x 13.6+14.1 (left) / 14.1 (right). 30,000 were printed;



5 December 2014: M/s (F):

Princess of Gunung Ledang (legend): 40mm x 60mm RM5(B) stamp, gold foil applied to fan, headdress and jewellery, watermark inverted, perf. 13.6 x 13.4 in two operations left and half top/bottom, right and half top/bottom. 30,000 were printed. This has also been reported with upright watermark ⁶;



6 December 2014: M/s (G):

Mak Yong (traditional dance form): 50mm x 60mm RM5(C) stamp, gold background to stamp, watermark sideways reading up, perf. 13.6 x 13.4 in two operations, top and half sides, bottom and half sides. 30,000 were printed. This has also been reported with watermark sideways reading down.



They were printed by Percetakan Keselamatan Nasional using standard four-colour off-set lithography plus extras as detailed above. The phosphor-coated paper gave a greenish-white fluorescent reaction and a yellow-green after-glow under ultra-violet light. The paper had watermark Multiple SPM.

First day facilities:

The first day cover, sold at 50s., was similar to the November issue but with slightly revised text. 80,000 were printed.

Special first day postmarks were provided for each day: 1 December: Malaysia Day (heart covered in Malaysia flag), 2 December: Philately Day (heart with B109 spider's web postmark and perforations), 3 December: Communication Day (heart with singing birds), 4 December: Postal Day (heart with hibiscus stamp), 5 December: Youth Day (heart with boy and girl), 6 December: International Friendship Day (heart with shaking hands and globe).

The folder was sold at RM6. 4000 were printed.

No.	S.G.	I.S.C.	Mint	Used
14.13.1	MS2049	-	<input type="checkbox"/>	<input type="checkbox"/>
14.13.1a	MS2049w	-	<input type="checkbox"/>	<input type="checkbox"/>
14.13.2	MS2048	-	<input type="checkbox"/>	<input type="checkbox"/>
14.13.3	MS2045	-	<input type="checkbox"/>	<input type="checkbox"/>
14.13.4	MS2046	-	<input type="checkbox"/>	<input type="checkbox"/>
14.13.5	MS2047	-	<input type="checkbox"/>	<input type="checkbox"/>
14.13.5a	MS2047w	-	<input type="checkbox"/>	<input type="checkbox"/>
14.13.6	MS2050	-	<input type="checkbox"/>	<input type="checkbox"/>
14.13.6a	MS2050a	-	<input type="checkbox"/>	<input type="checkbox"/>
14.13.7	MS2051	-	<input type="checkbox"/>	<input type="checkbox"/>
14.13.7a	-	-	<input type="checkbox"/>	<input type="checkbox"/>
14.13.8	-	-	<input type="checkbox"/>	<input type="checkbox"/>
14.13.9	-	-	-	<input type="checkbox"/>
14.13.10	-	-	-	<input type="checkbox"/>
14.13.11	-	-	-	<input type="checkbox"/>

No.	S.G.	I.S.C.	Mint	Used
14.13.12	-	- (5).	-	<input type="checkbox"/>
14.13.13	-	- (6).	-	<input type="checkbox"/>
14.13.14	-	- (7).	-	<input type="checkbox"/>

Setemku sheet:

Yet another item issued at this exhibition was a generic version of the 2011 Setemku sheet with a background and stamps showing the event emblem. Technical details were as for the original issue (q.v.).

5 December 2014.**World Youth Stamp Exhibition (III).**

On the evening of 5 December, without prior announcement, Pos Malaysia issued a 130mm x 80mm miniature sheet originally intended for release in 2013 to mark the Trengganu Royal Stamp Exhibition, containing the three stamps of 1999 se-tenant. For details, see issue 99.4.

23 December 2014.**40th Anniversary of Sultan of Pahang.**

This issue was such a late starter that it was not expected when the invoices for the preceding issue were prepared!

Designed by Pos Malaysia, this issue comprised a single counter sheet.

Counter sheets:

The 40mm x 50mm, 60s. counter sheet stamps showed the Sultan with the new State Government Administrative Centre in Kota Sultan Ahmad Shah (formerly Indera Mahkota).

They were printed in sheets of 20 (5 x 4) by Percetakan Keselamatan Nasional using standard four-colour off-set lithography. 100,000 stamps were printed. Sheet markings were issue title in left margin; 1A (x4) to left of R1/1 and right of R4/5, colour dots (x4) to right of R1/5 and left of R4/1. The phosphor-coated paper gave a greenish-white fluorescent reaction and a yellow-green after-glow under ultra-violet light. The paper had watermark Multiple SPM upright. The comb perforations measured 14.0; the left margin being imperforate and the rest perforated through.

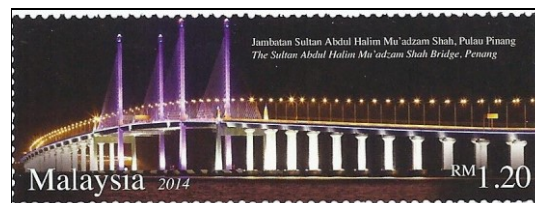
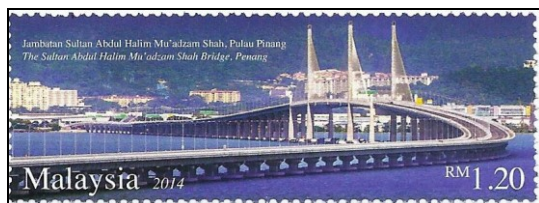
First day facilities:

The first day cover, sold at 50s., featured the Sultan and the arms of Pahang. 40,000 were printed.

The special first day postmark included "40 tahun".

The folder was sold at RM6. 2000 were printed.

No.	S.G.	I.S.C.	Mint	Used
14.14.1	2052	- 60s.	<input type="checkbox"/>	<input type="checkbox"/>
14.14.1a	2052w	- Wmk. I. ⁸	<input type="checkbox"/>	<input type="checkbox"/>
14.14.2	-	First day cover (1).	<input type="checkbox"/>	<input type="checkbox"/>

31 December 2014.**Sultan Abdul Halim Mu'adzam Shah Bridge, Penang.**

Also known as Penang Second Bridge, this is the longest bridge in southeast Asia. It is a 24km long, (of which 16.9km is over water) dual carriageway, cable-stayed bridge linking Batu Kawan in Seberang Perai with Batu Maung on the island. The three main navigation spans allow a 30m clearance for shipping. It is designed to withstand a 7.5 Richter

Scale magnitude earthquake. Construction began in November 2008 and it was completed in February 2014, being formally opened by the Prime Minister on 1 March, with traffic commencing on 2 March. A late added-starter, this issue was originally announced at the start of December for issue on 15 December, but, at that stage, no one was expecting the Pahang issue!

Designed by Reign Associates, this issue comprised two counter sheets.

Counter sheets:

The 70mm x 25mm counter sheet stamps showed:

RM1.20 (A): Bridge by day;

RM1.20 (B): Bridge by night.

They were printed in sheets of 15 (3 x 5) by Percetakan Keselamatan Nasional using standard four-colour off-set lithography. 150,000 of each stamp were printed. Sheet markings were issue title in top margin, 1A (x4) to left of R1/1 and right of R5/3, colour dots (x4) to right of R1/3 and left of R5/1, Pos emblem below R5/2. The phosphor-coated paper gave a greenish-white fluorescent reaction and a yellow-green after-glow under ultra-violet light. The paper had watermark Multiple SPM inverted. The comb perforations measured 13.1 x 13.7; the top margin being imperforate and the rest perforated through.

First day facilities:

The first day cover, sold at 50s., featured the bridge with shipping. 35,000 were printed.

The special first day postmark included the cable-stayed spans.

The folder was sold at RM6. 2500 were printed.

No.	S.G.	I.S.C.		Mint	Used
14.15.1	2054	-	\$1.20 (A).	<input type="checkbox"/>	<input type="checkbox"/>
14.15.2	2053	-	\$1.20 (B).	<input type="checkbox"/>	<input type="checkbox"/>
14.15.3	-	-	First day cover (1).	<input type="checkbox"/>	<input type="checkbox"/>

A cancelled issue for 2014 was 12 December 2014 - Legacy of the Loom (2).

NOTES

- ¹ Reported by Mr. A. Leong Fook Chee in The Malaysian Philatelist 2015 Vol.1, p.46.
- ² Reported by Mr. M. Kingsland 18Mar2020.
- ³ Listing of this issue in latest S.G. catalogue contains several errors.
- ⁴ Reported by Mr. M. Kingsland.
- ⁵ Shown by "Southern Philatelist" on Facebook.
- ⁶ Reported by Mr. M. Kingsland.
- ⁷ Listed by S.G. but not seen by the author.
- ⁸ Listed by S.G. but not seen by the author.